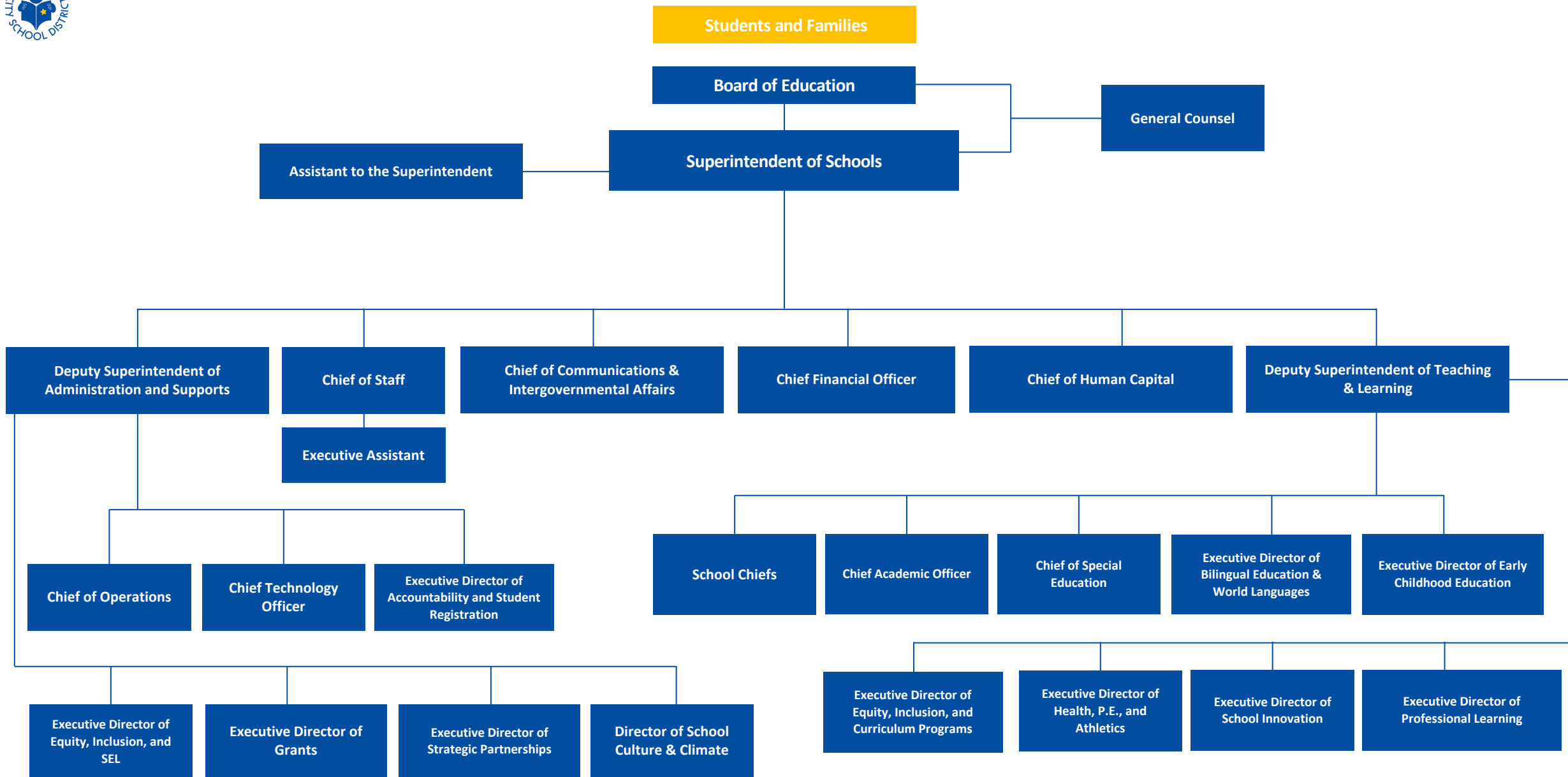




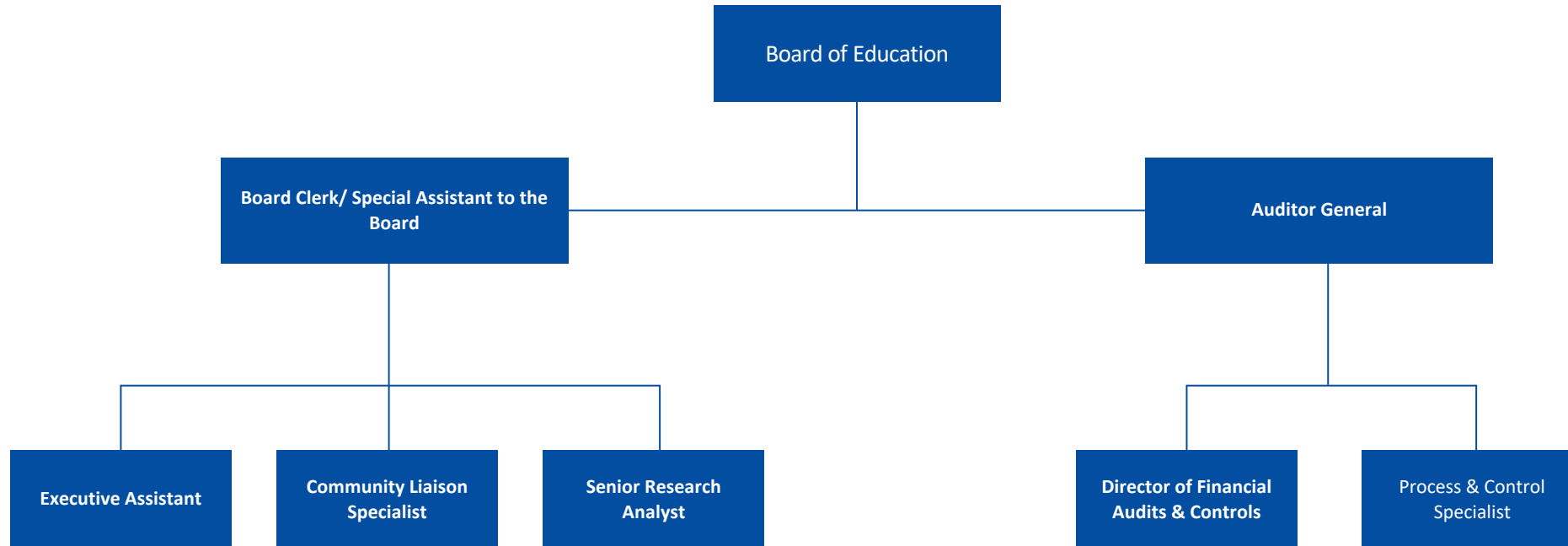
## TABLE OF CONTENTS

PAGE #	TITLE	PAGE #	TITLE
2	<a href="#">Rochester City School District</a>	26	<a href="#">Office of Accountability</a>
3	<a href="#">Board of Education</a>	27	<a href="#">Student Equity and Placement</a>
4	<a href="#">Office of the Superintendent</a>	28	<a href="#">Student Equity &amp; Placement LAPC</a>
5	<a href="#">Department of Law</a>	29	<a href="#">Office of Grants and Program Accountability</a>
6	<a href="#">Department of Communications</a>	30	<a href="#">Department of Information Management &amp; Technology</a>
7	<a href="#">Office of Human Capital</a>	31	<a href="#">Department of IM&amp;T - Instructional Technology, Virtual Academy, Help Desk, School Technicians</a>
8	<a href="#">Department of Finance</a>	32	<a href="#">Department of IM&amp;T - Network Infrastructure</a>
9	<a href="#">Department Teaching and Learning</a>	33	<a href="#">Department of IM&amp;T - Student Enterprise Applications</a>
10	<a href="#">Chief Academic Officer</a>	34	<a href="#">Department of IM&amp;T - Business Enterprise Applications</a>
11	<a href="#">Department of Math</a>	35	<a href="#">Division of Operations</a>
12	<a href="#">Department of Social Studies</a>	36	<a href="#">Department of Safety and Security</a>
13	<a href="#">Department of Arts</a>	37	<a href="#">Department of School Food Services</a>
14	<a href="#">Department of Science</a>	38	<a href="#">Department of Transportation Services</a>
15	<a href="#">Department of ELA/Integrated Literacy</a>	39	<a href="#">Department of Student Health Services</a>
16	<a href="#">Office of Innovation</a>	40	<a href="#">Department of Educational Facilities</a>
17	<a href="#">Department of Bilingual Education and World Languages</a>	41	<a href="#">Department of Equity, Inclusion, &amp; Student Support Services</a>
18	<a href="#">Department of Health, Physical Education and Athletics</a>	42	<a href="#">Department of Attendance</a>
19	<a href="#">Department of Early Childhood Education</a>	43	<a href="#">Student Support Services</a>
20	<a href="#">Office of Professional Learning</a>	44	<a href="#">Families in Transition</a>
21	<a href="#">Career and Technical Education Department</a>	45	<a href="#">Department of Strategic and Community Partnerships</a>
22	<a href="#">School Library Systems</a>	46	<a href="#">Office of Parent Engagement</a>
23	<a href="#">Department of Special Education</a>	47	<a href="#">Youth Services</a>
24	<a href="#">MTSS</a>		
25	<a href="#">Department of Administration and Supports</a>		



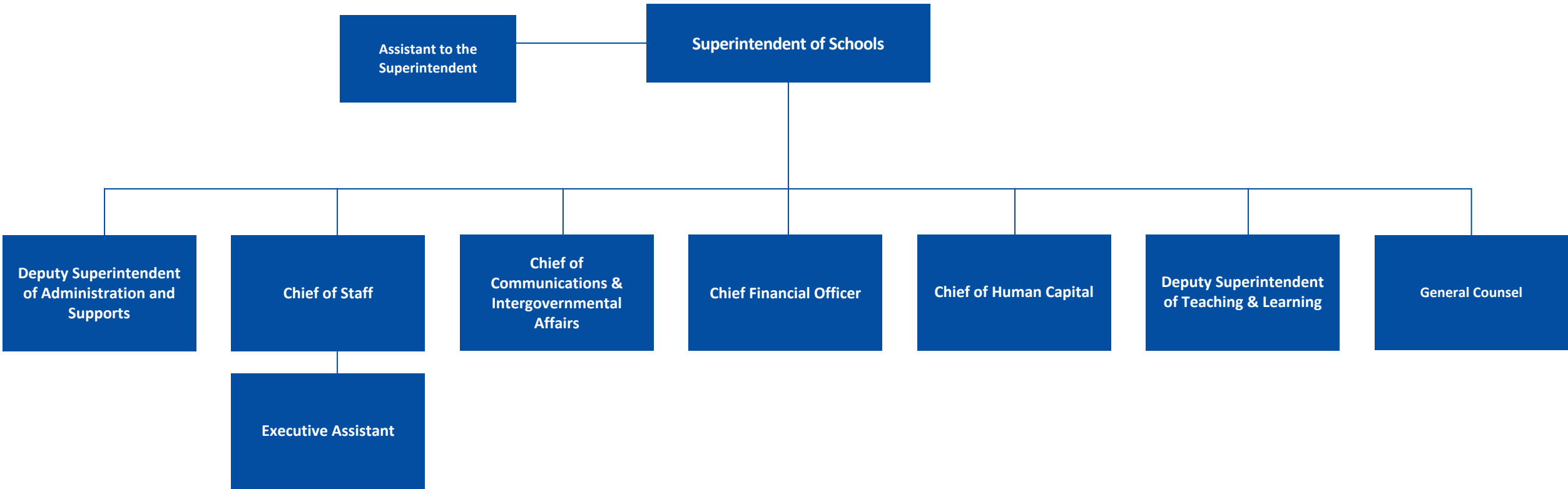


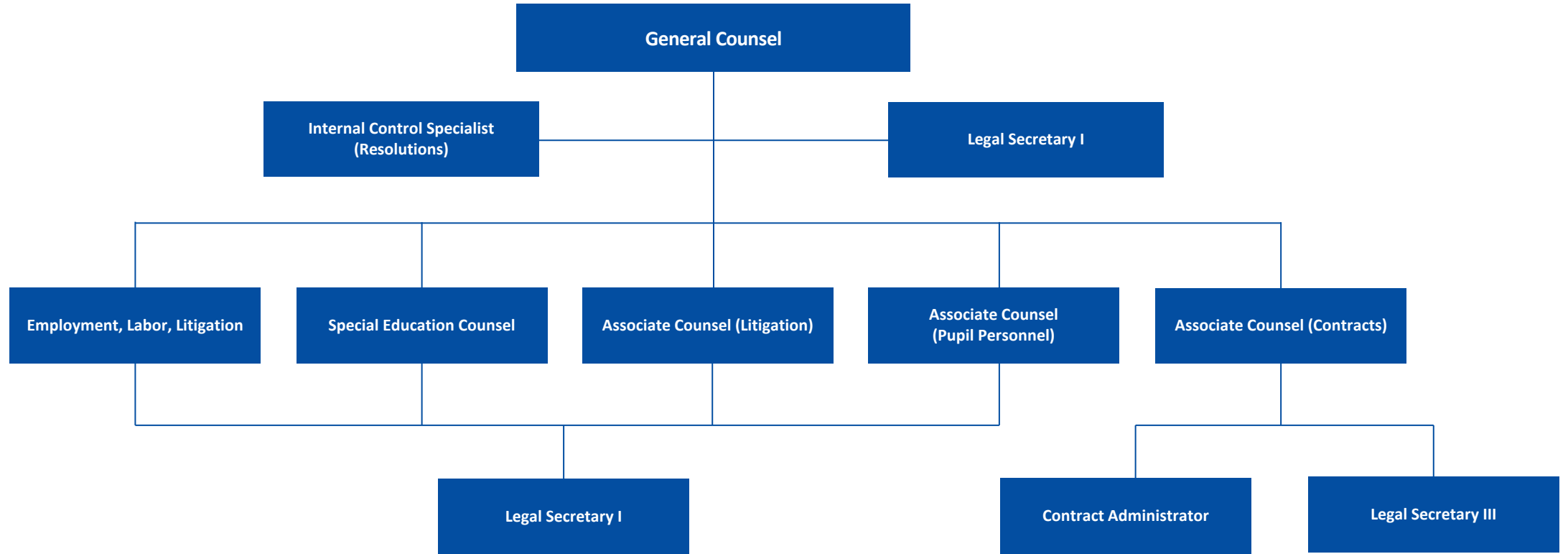
# Board of Education

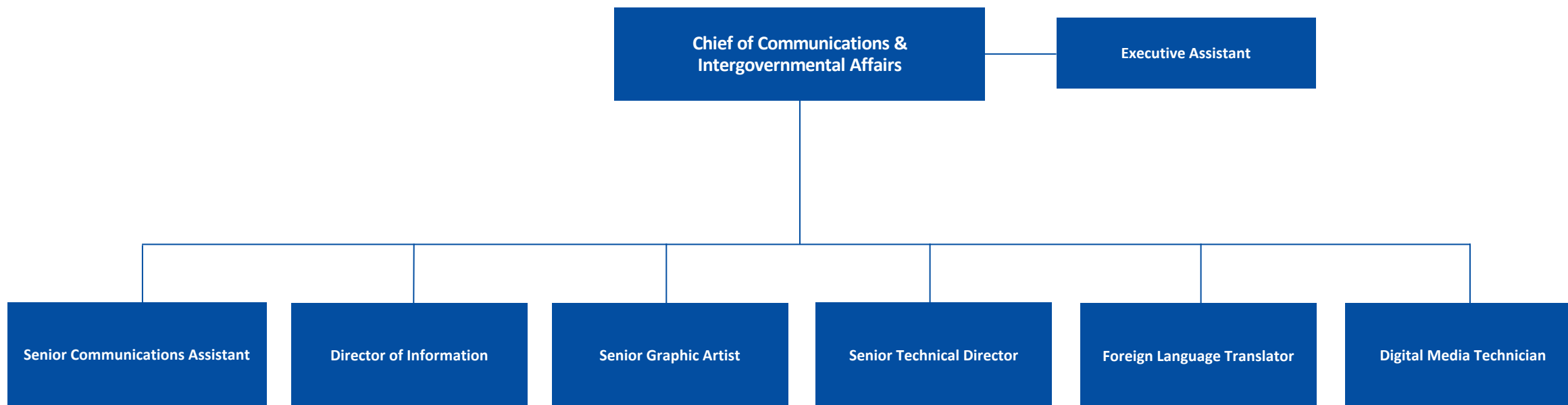




# Office of the Superintendent

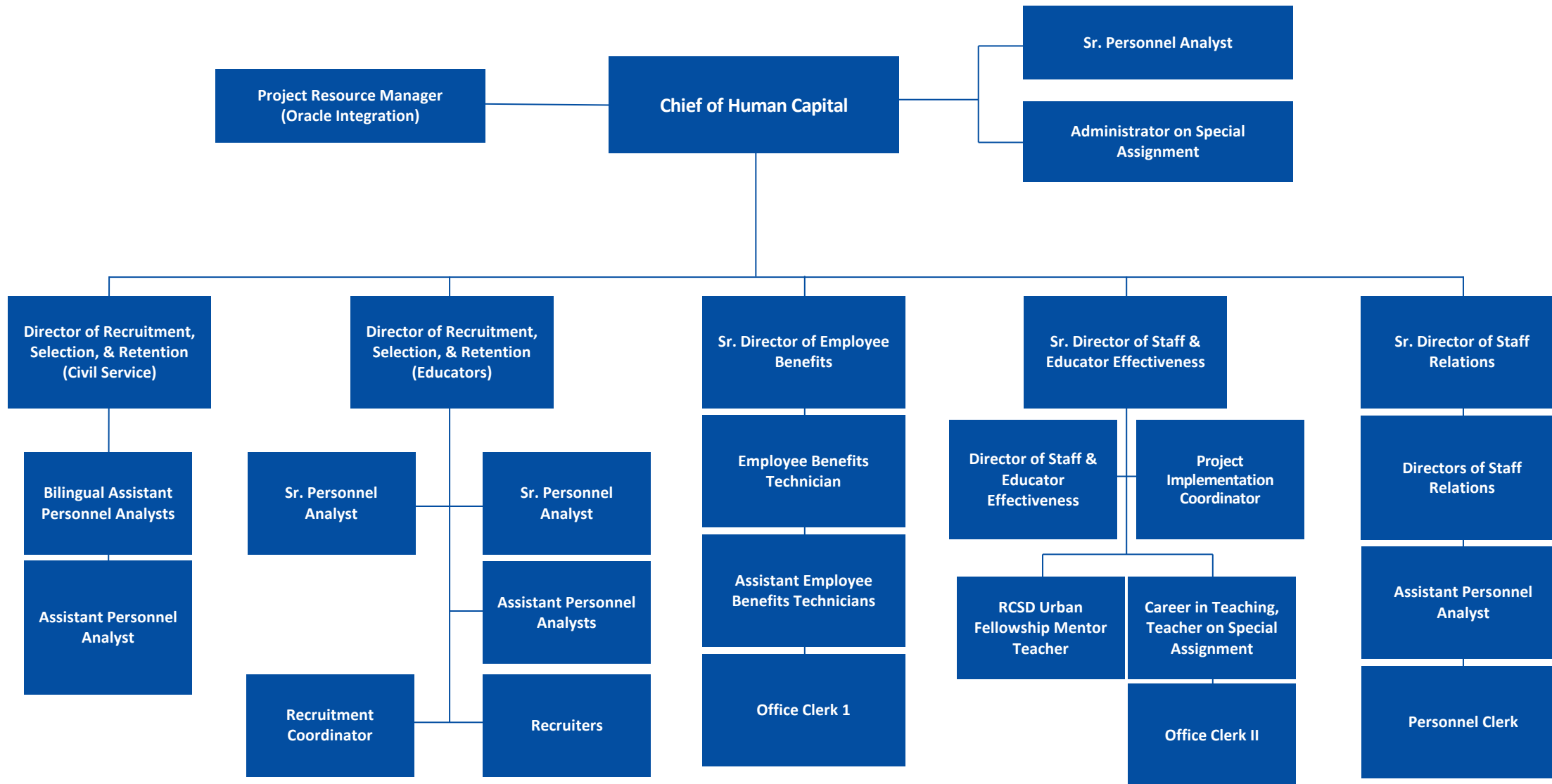


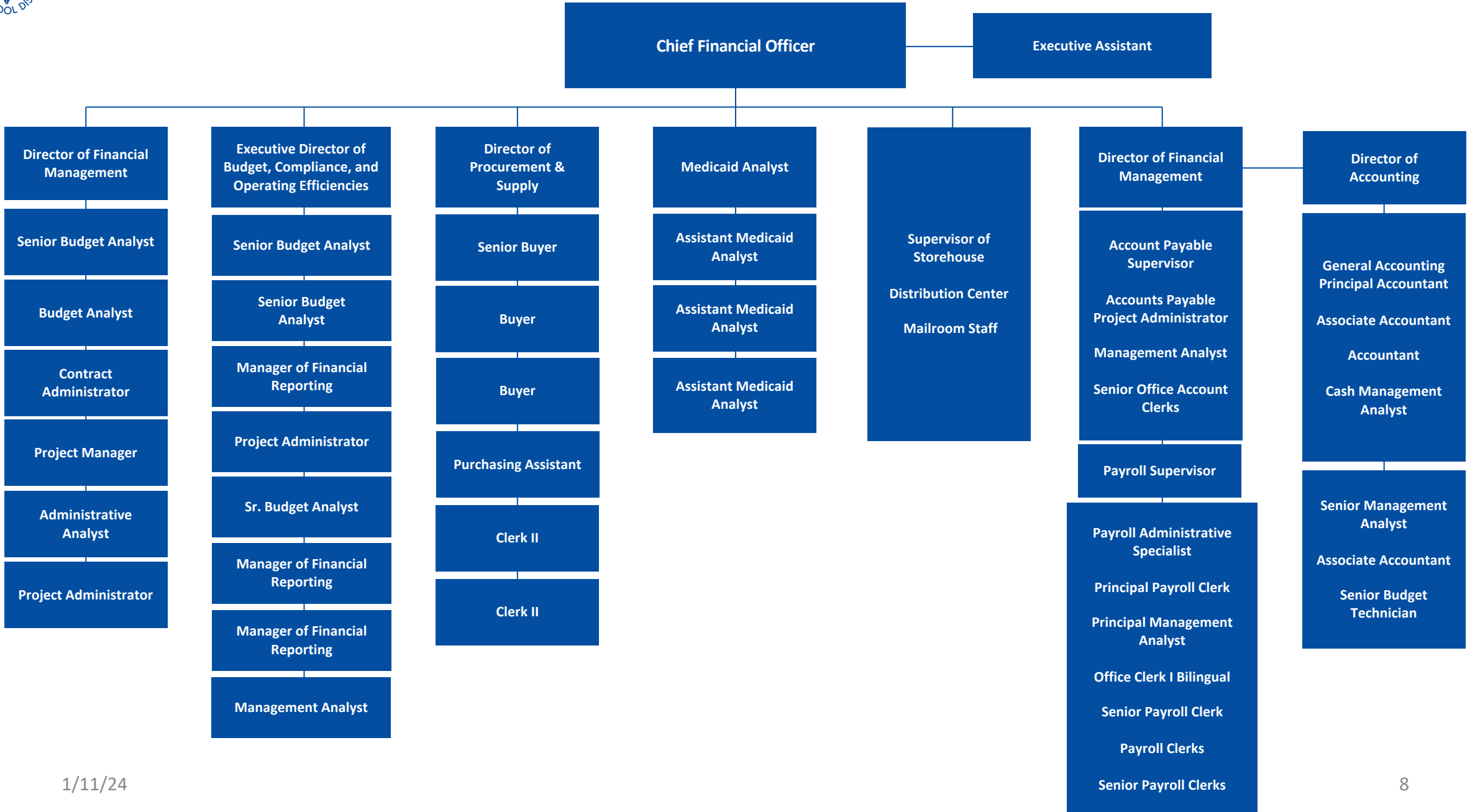




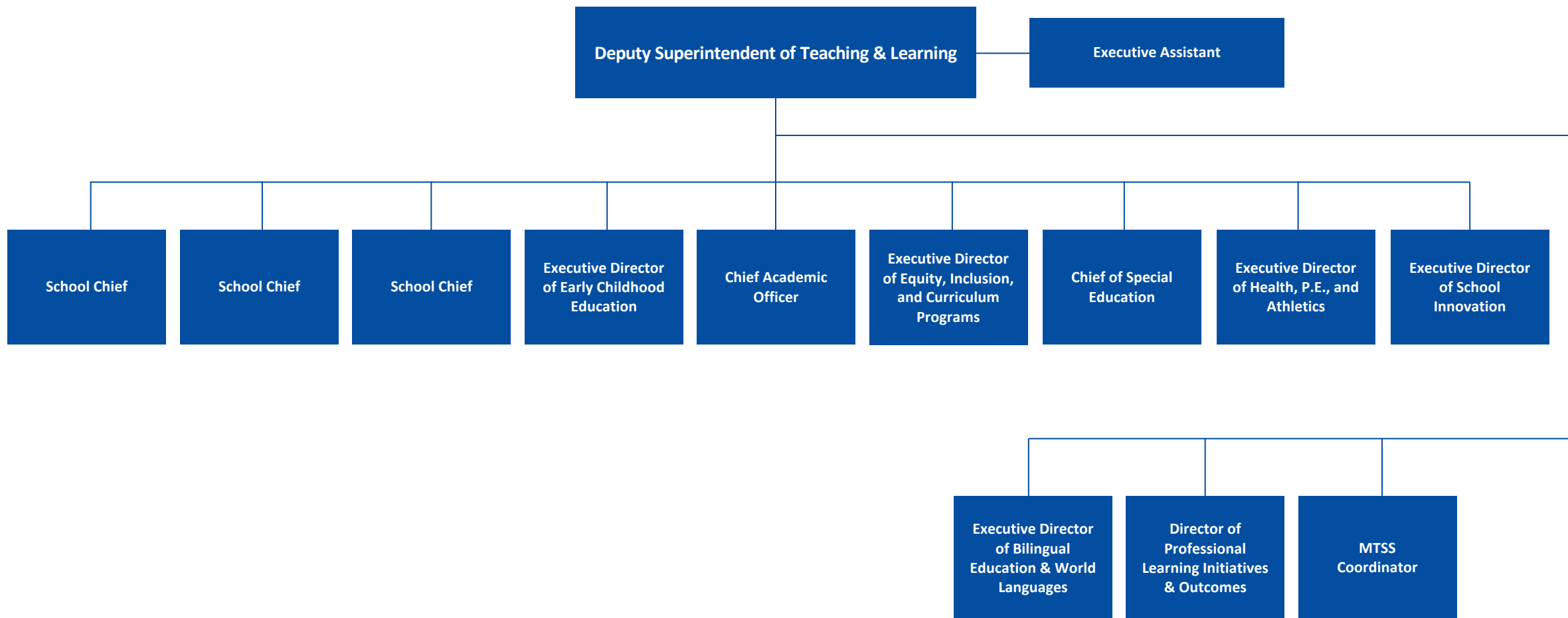


# Office of Human Capital



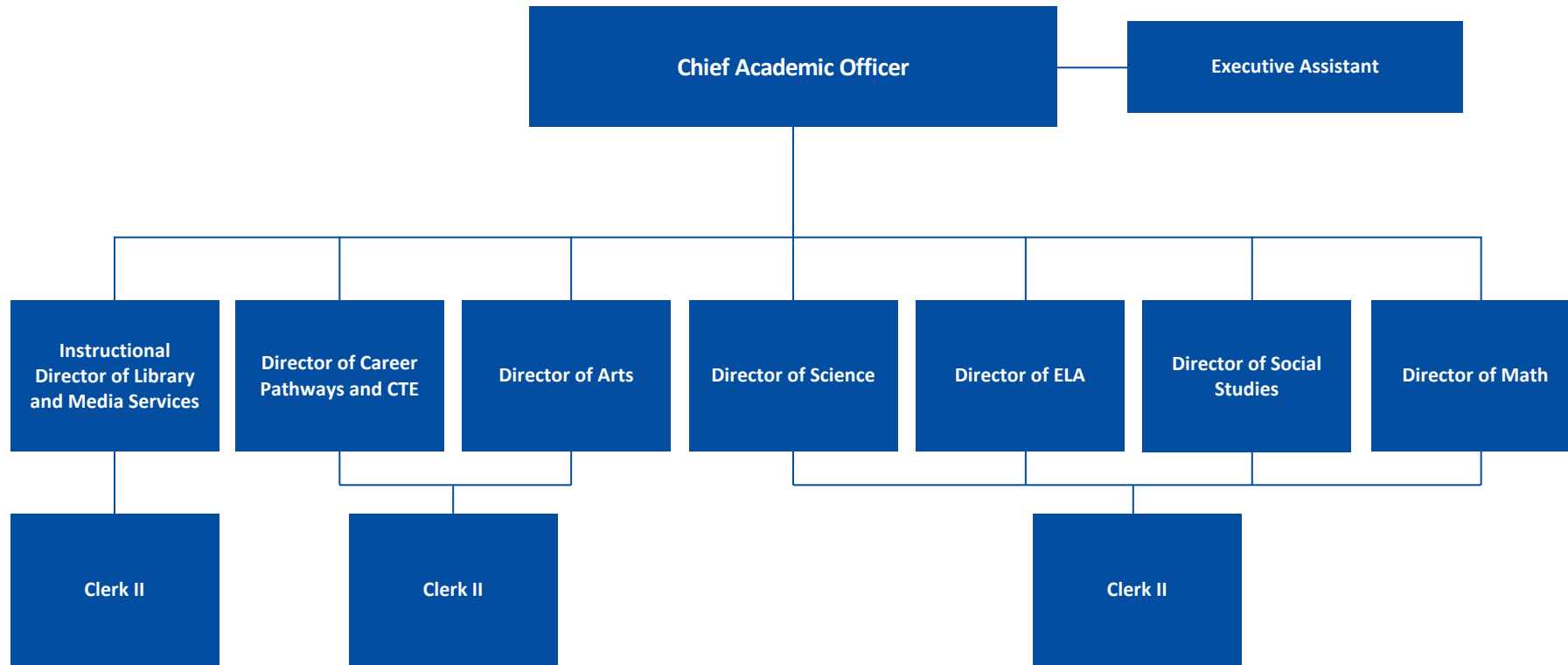


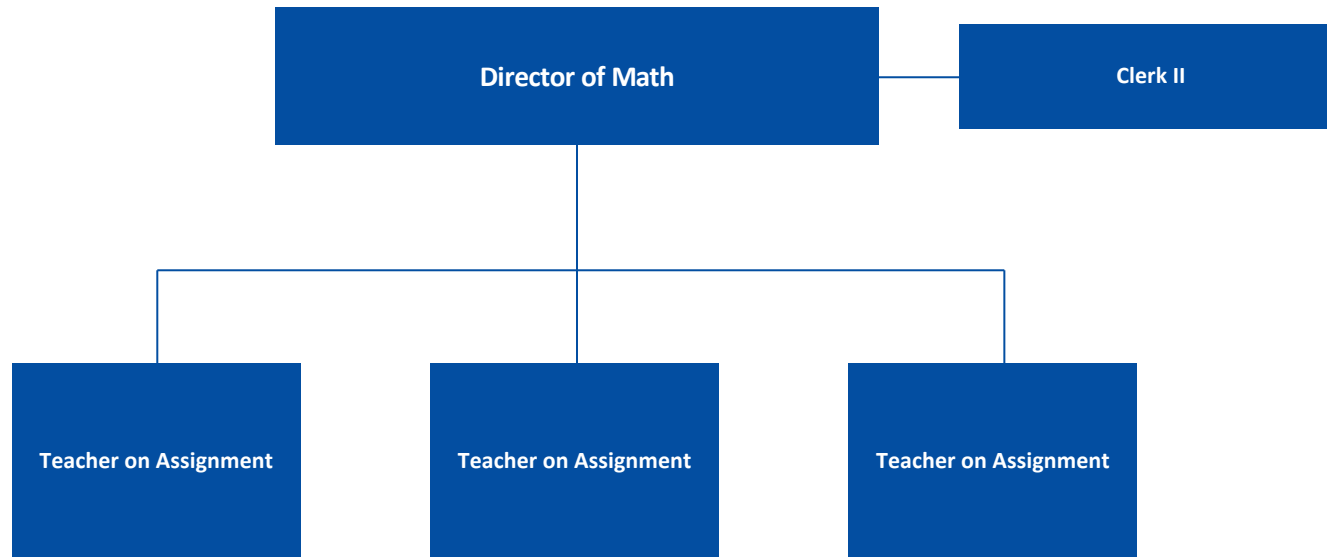


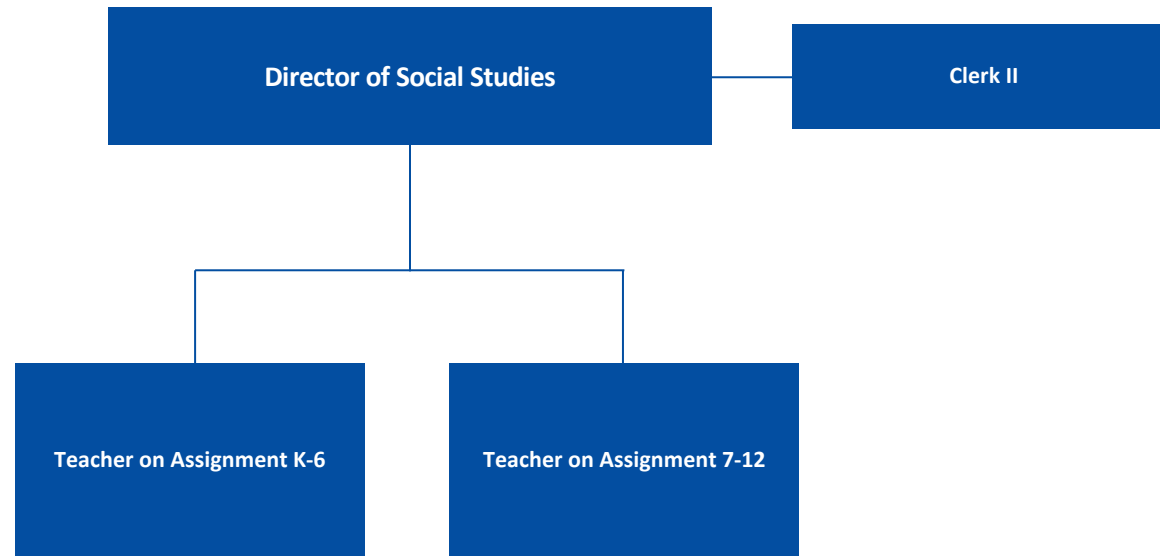


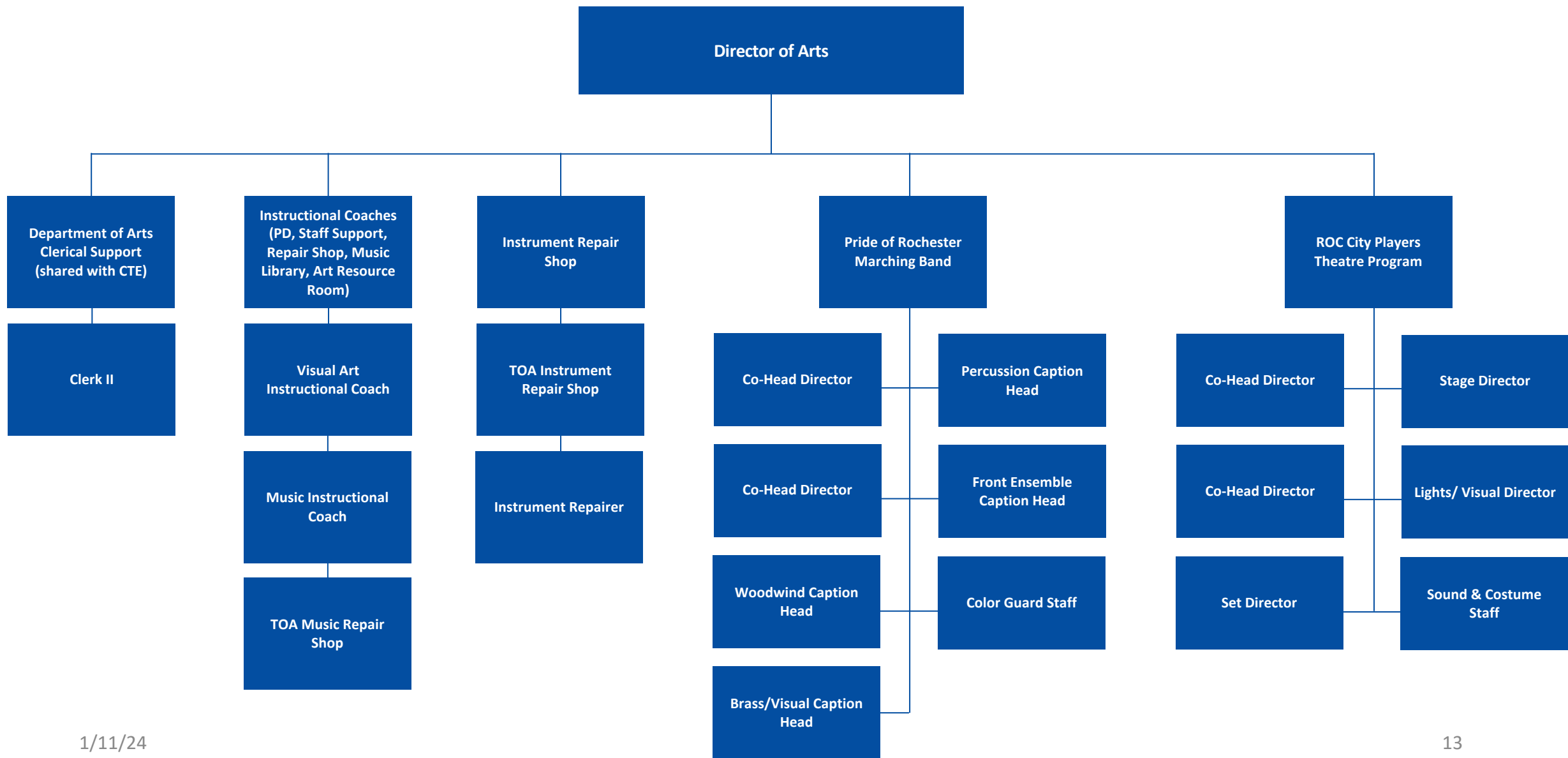


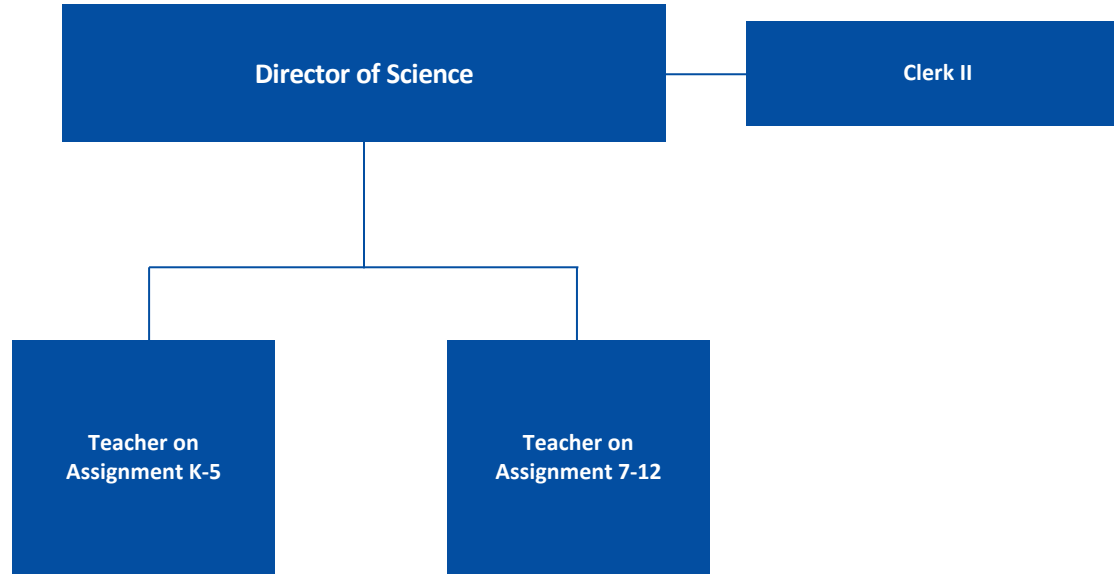
# Chief Academic Officer

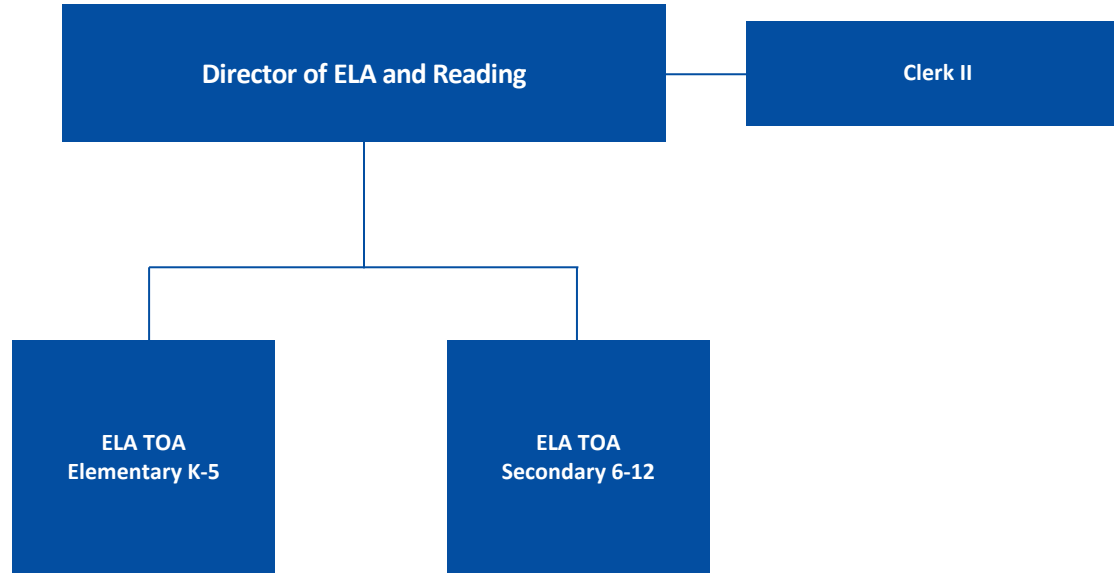


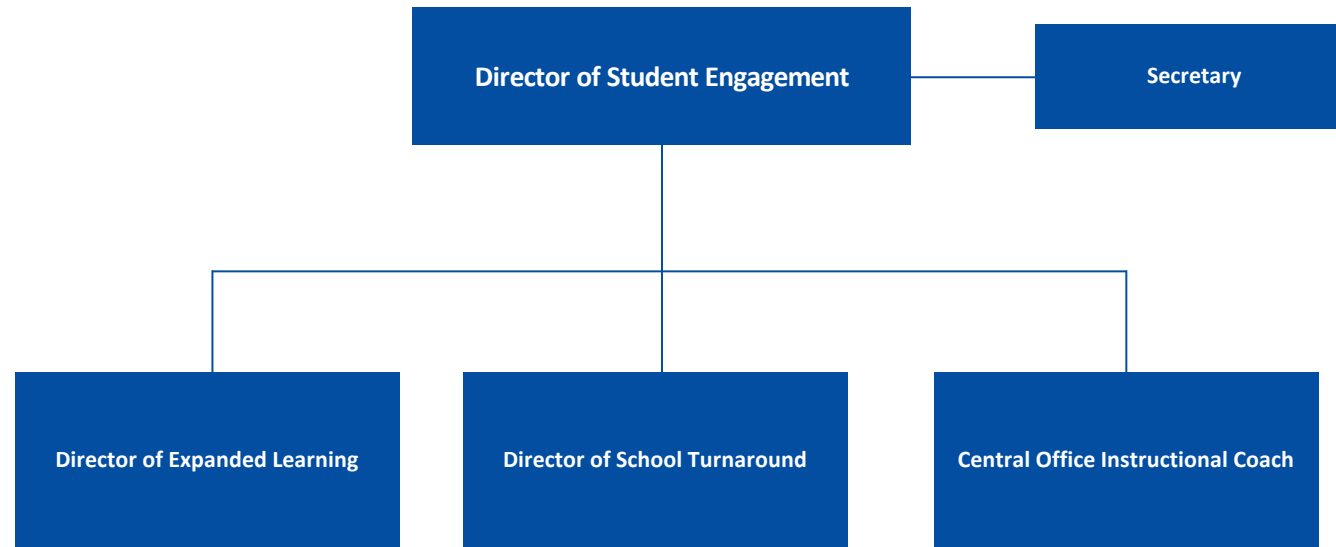








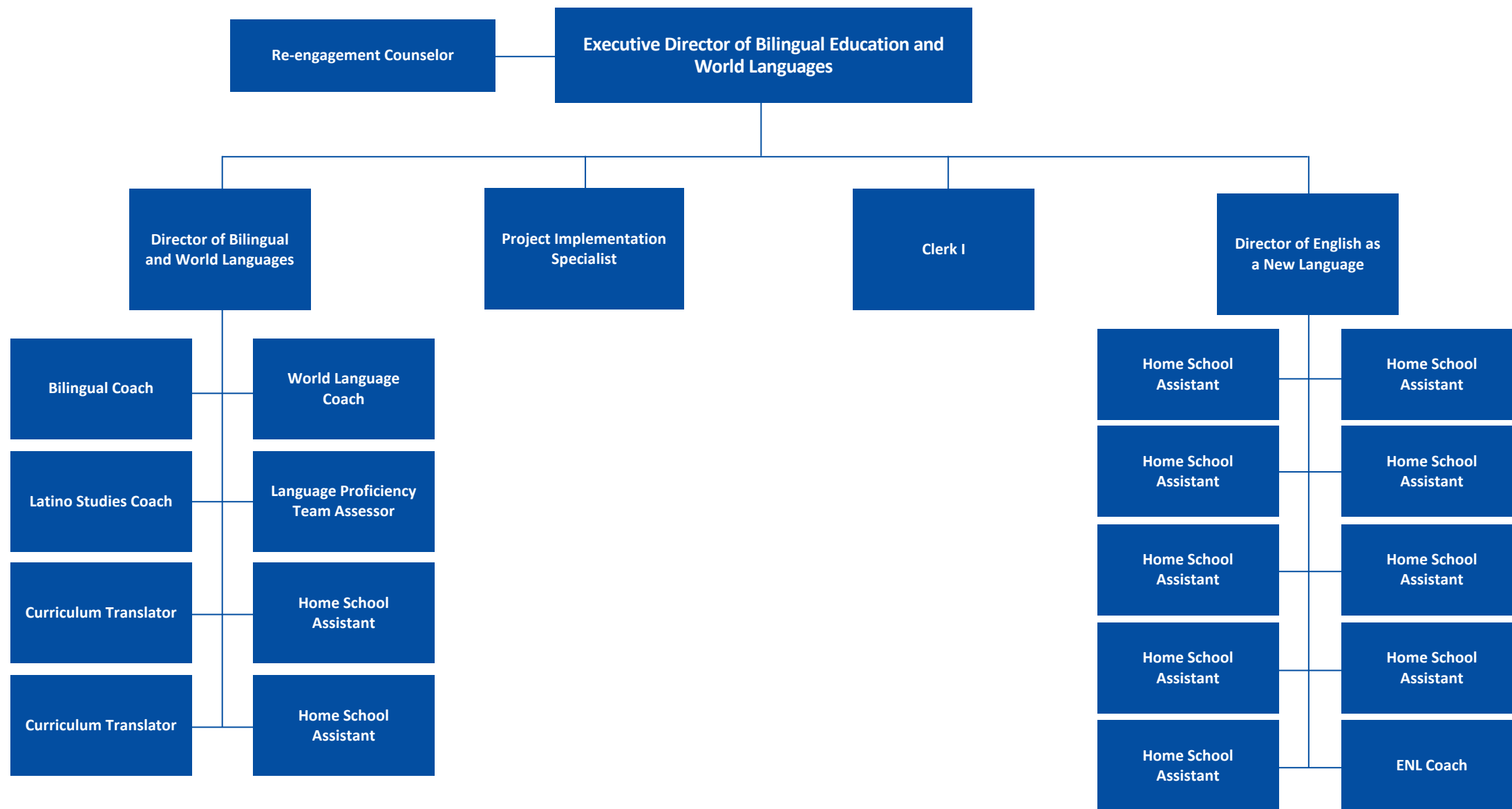






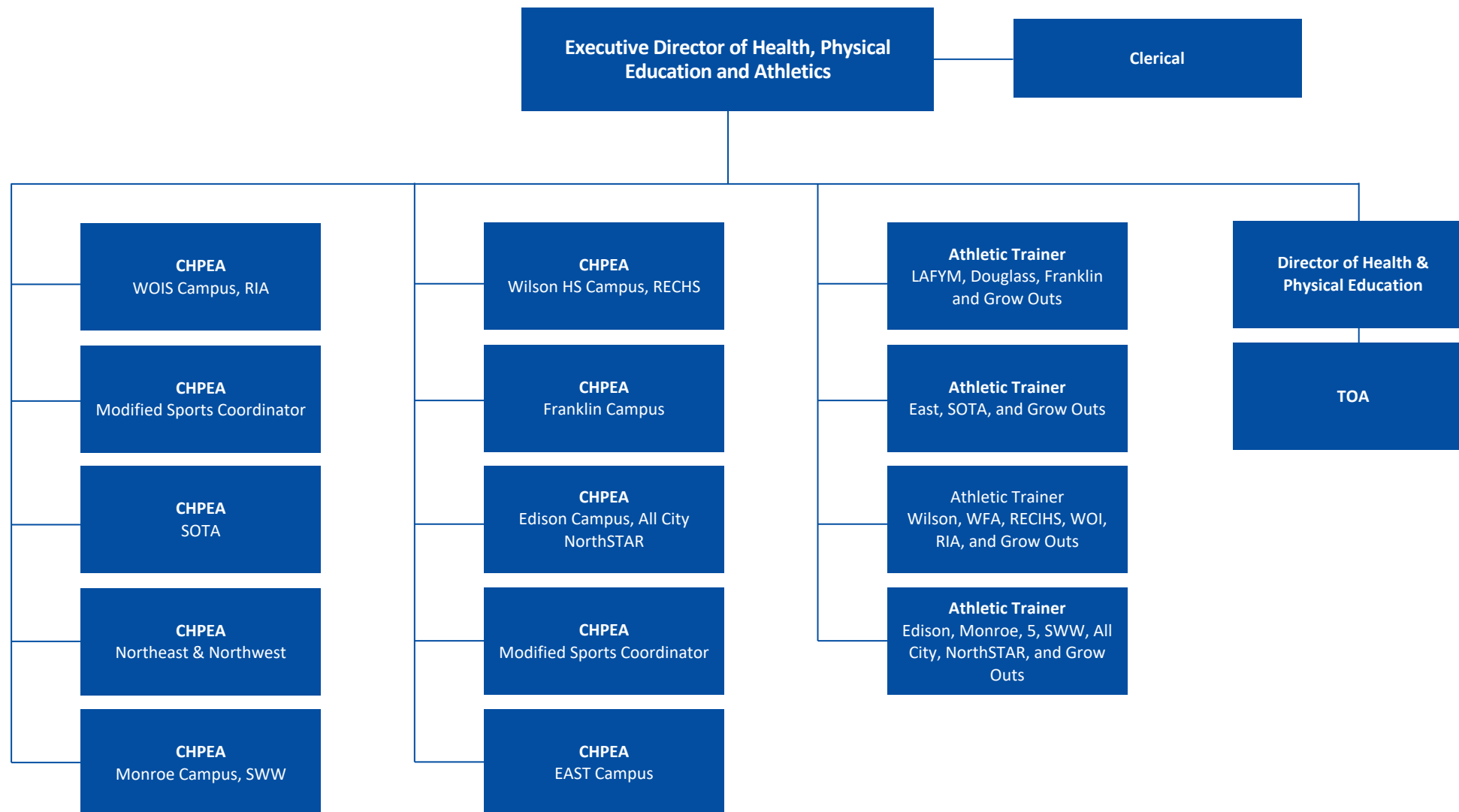


# Department of Bilingual Education and World Languages



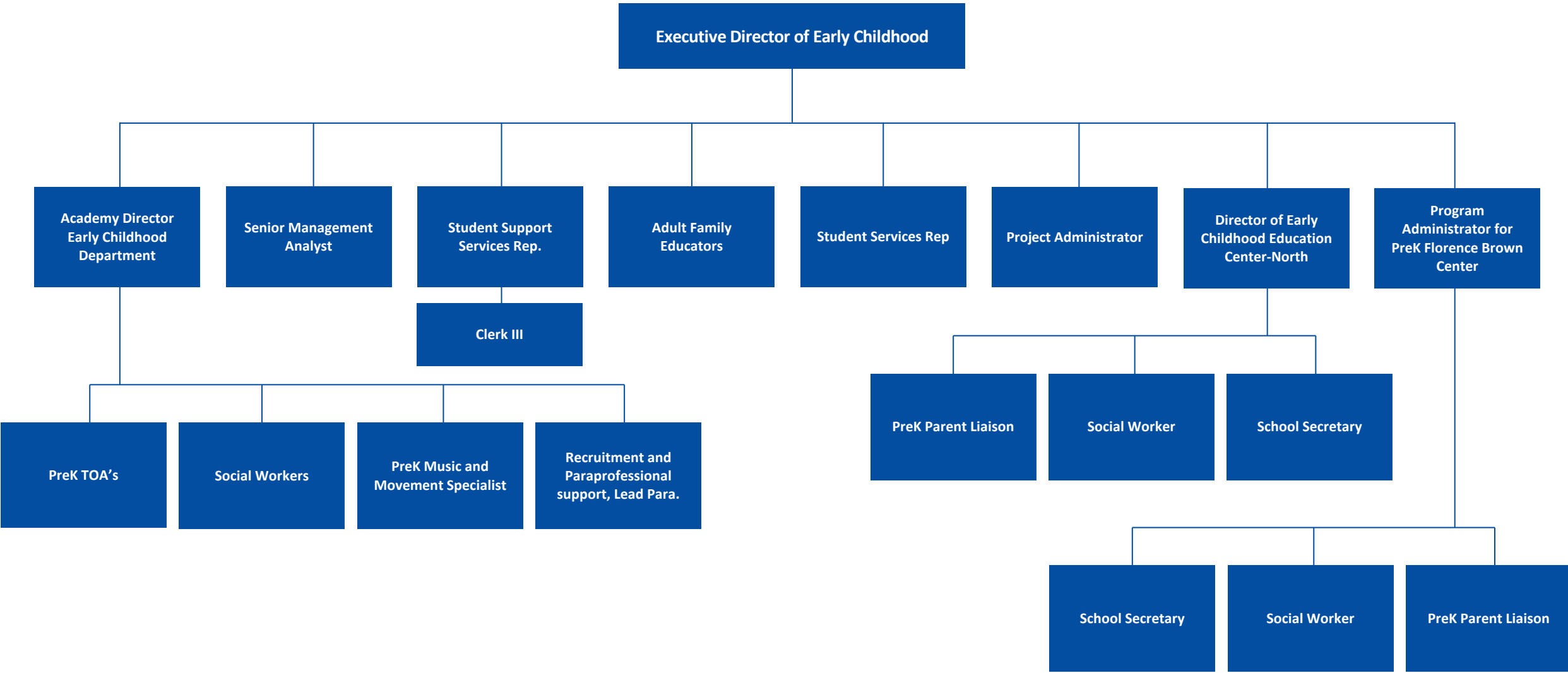


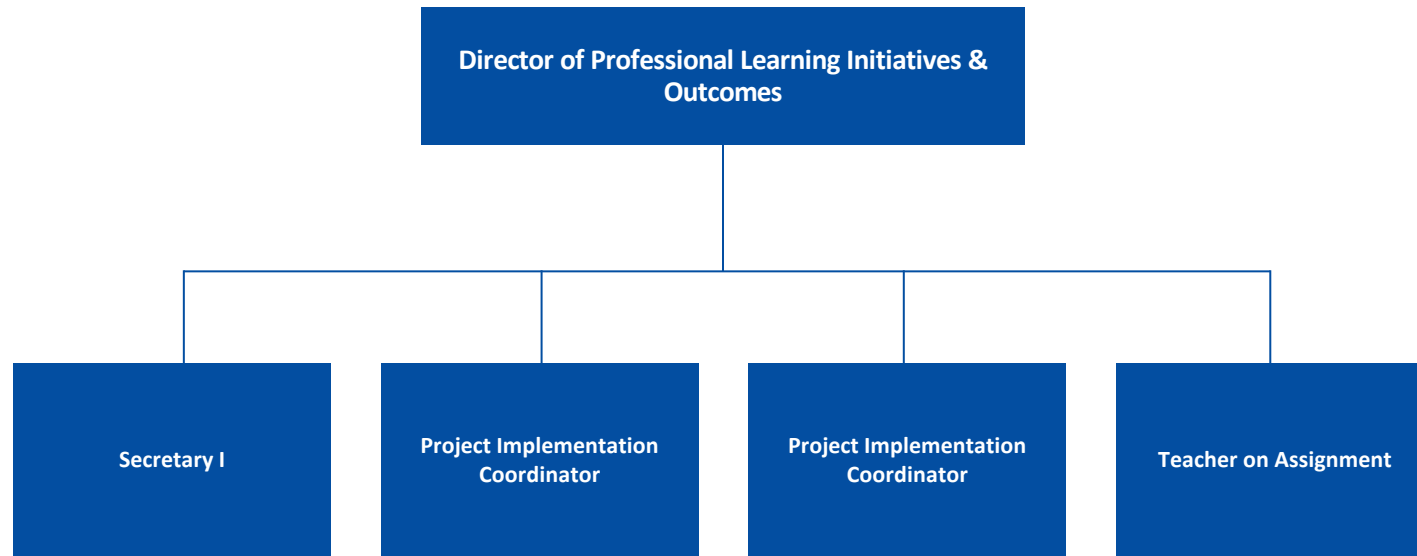
# Department of Health, Physical Education and Athletics





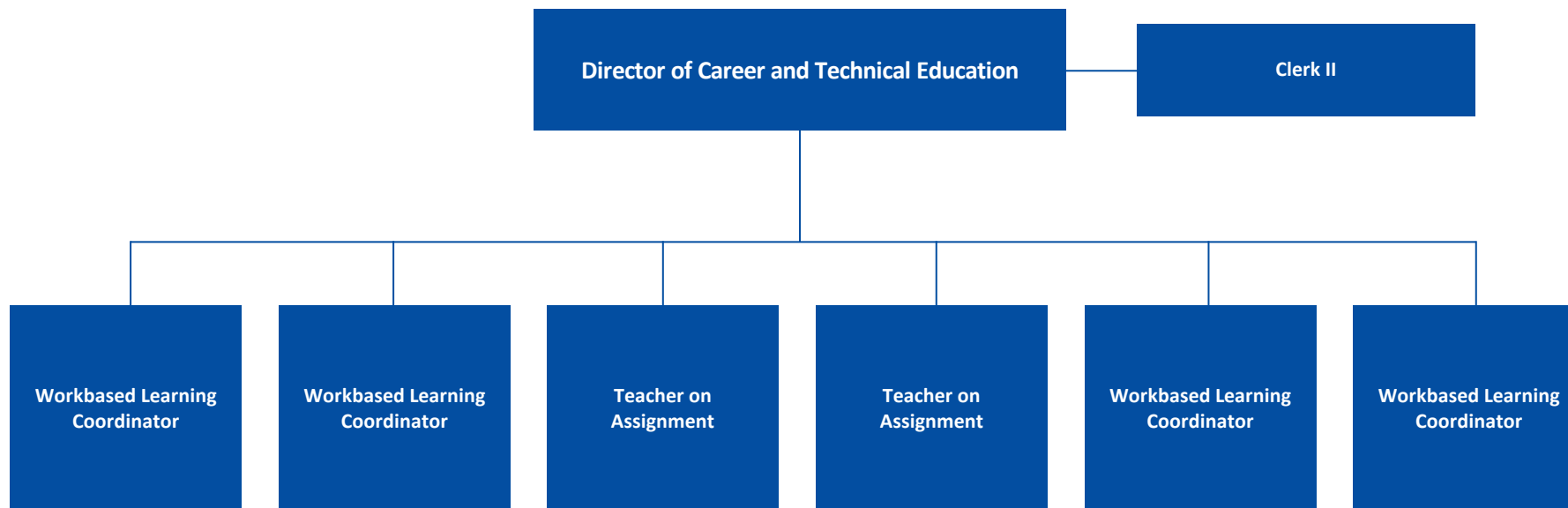
# Department of Early Childhood Education

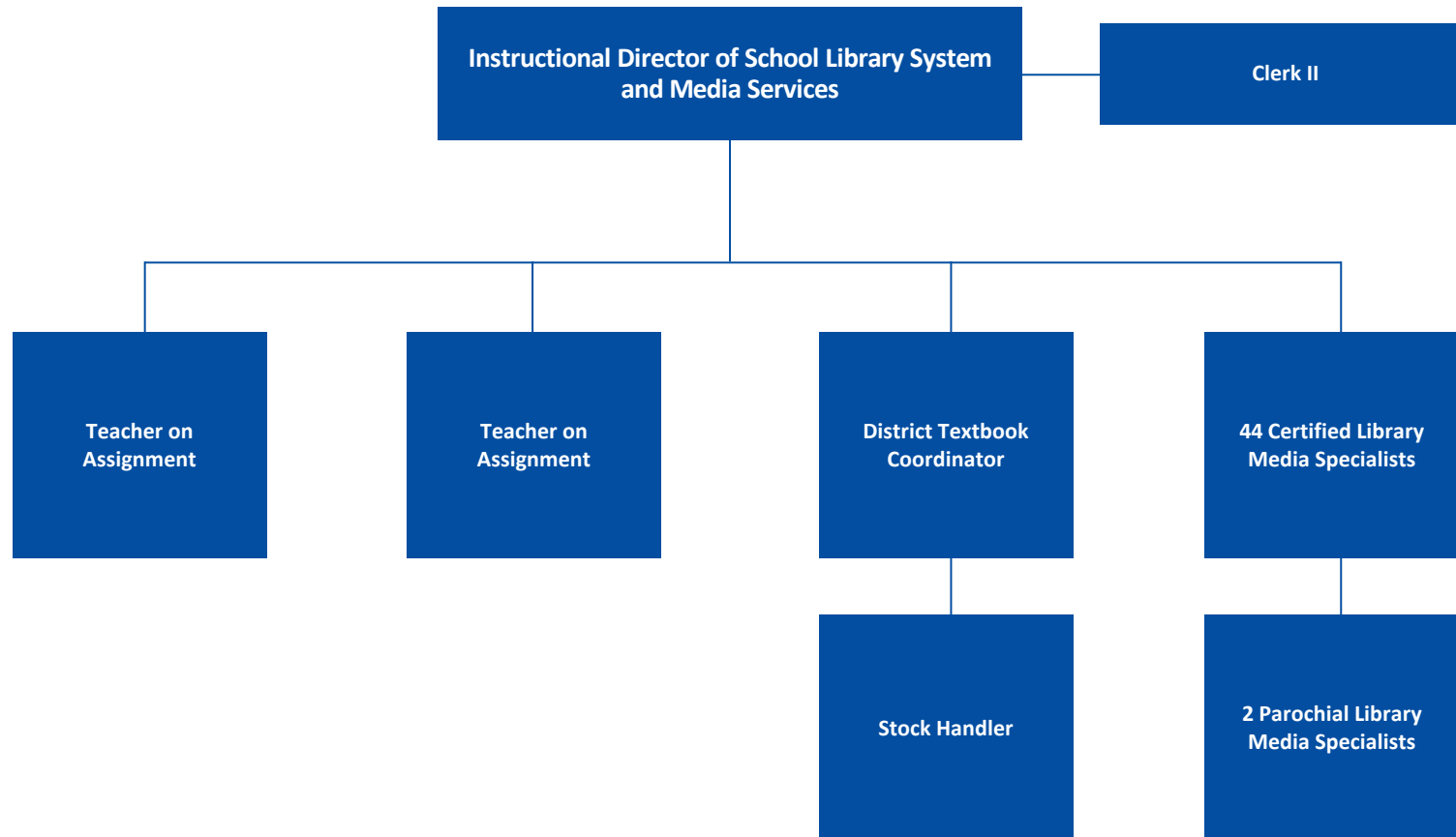


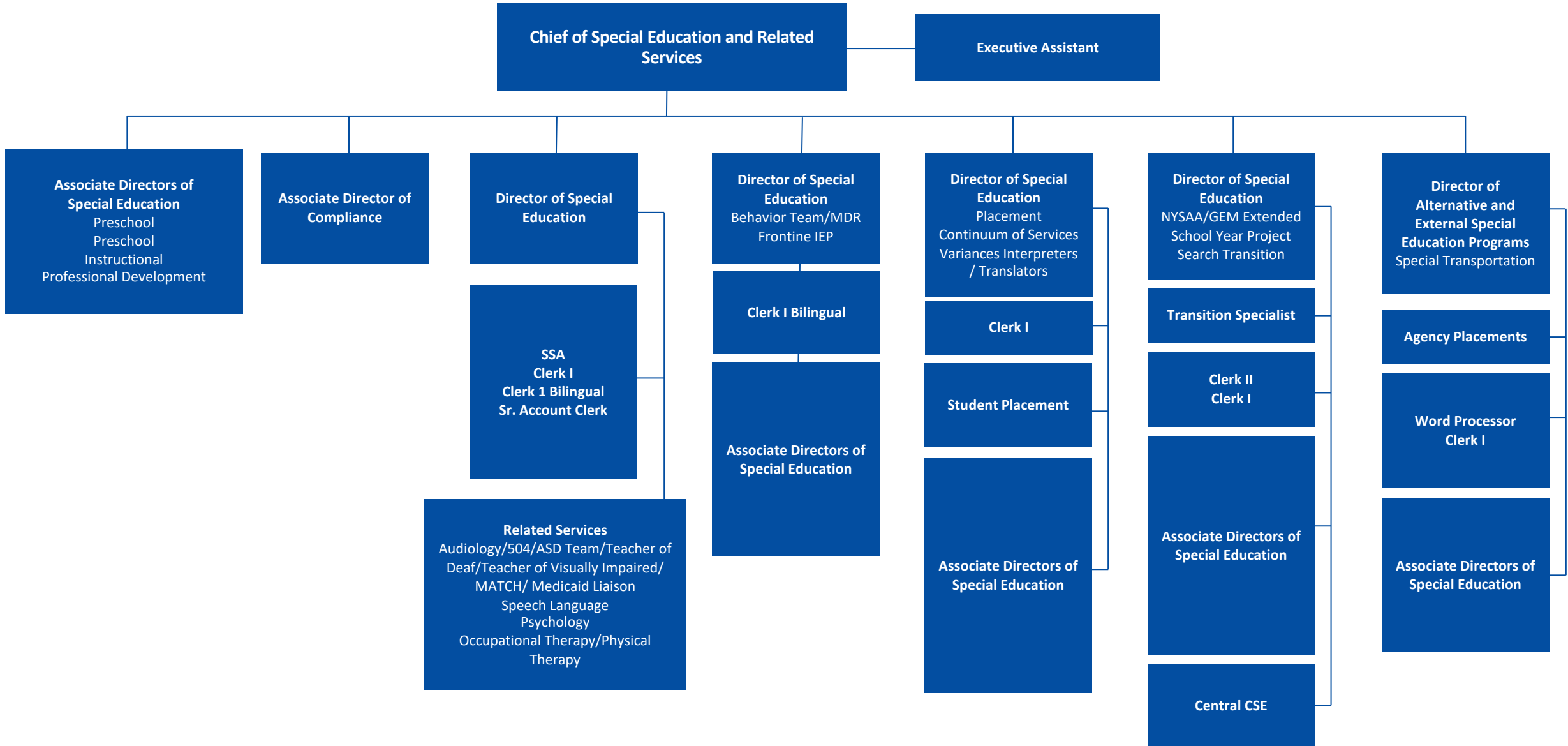


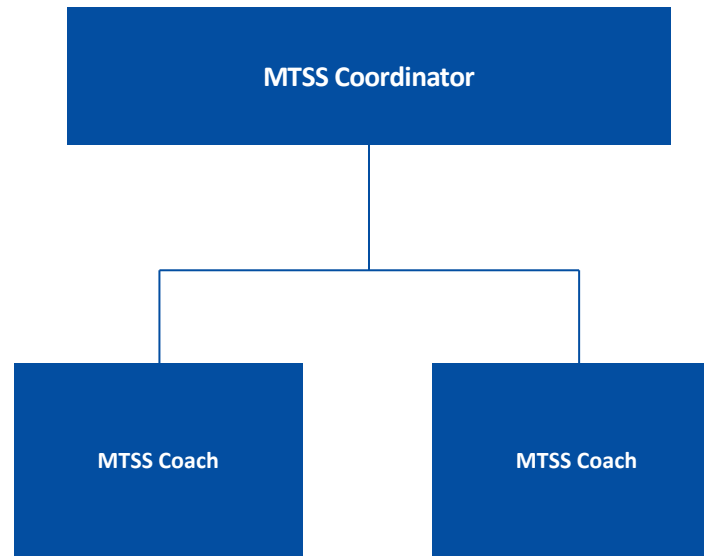


# Career and Technical Education Department

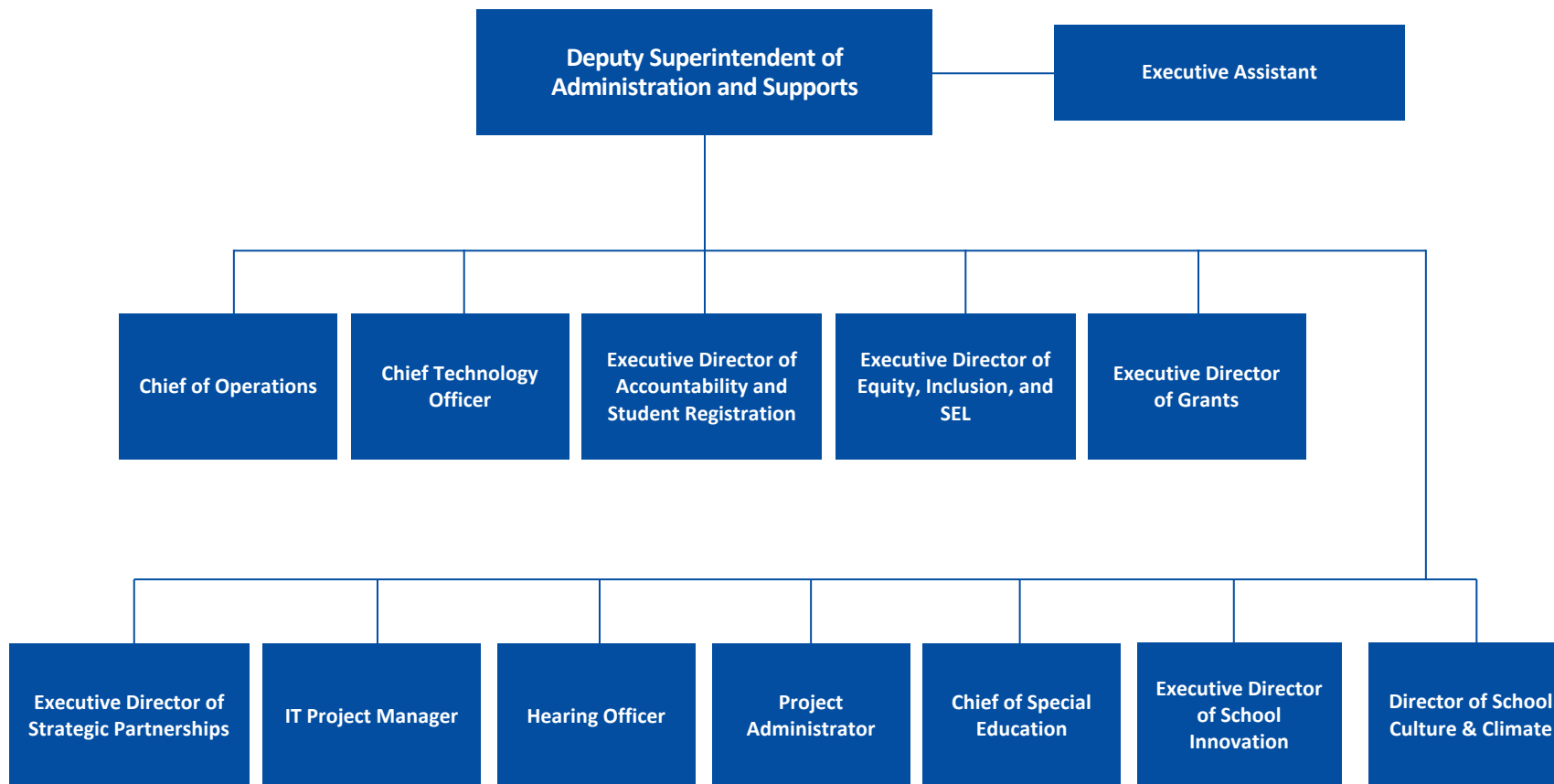


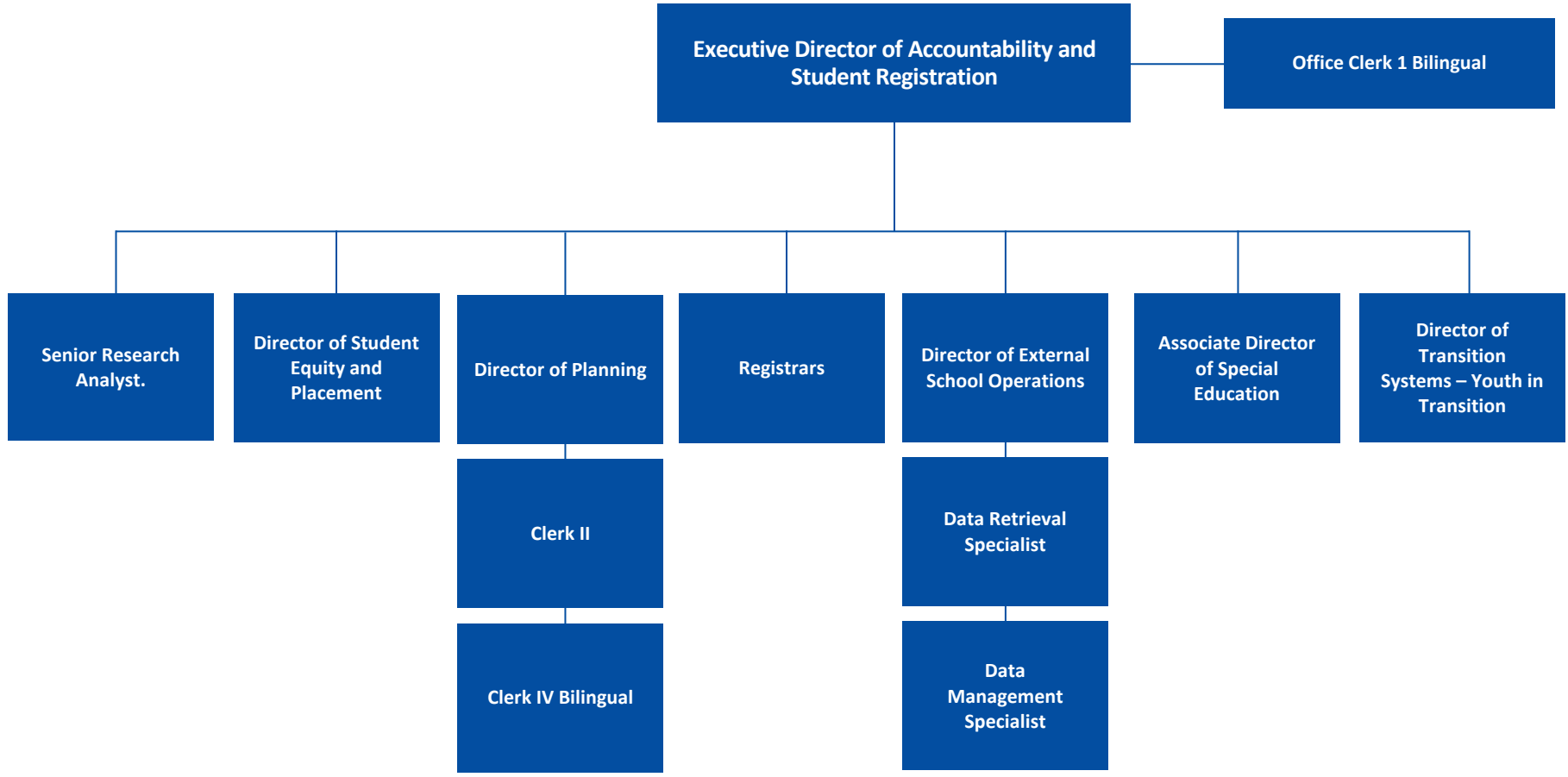


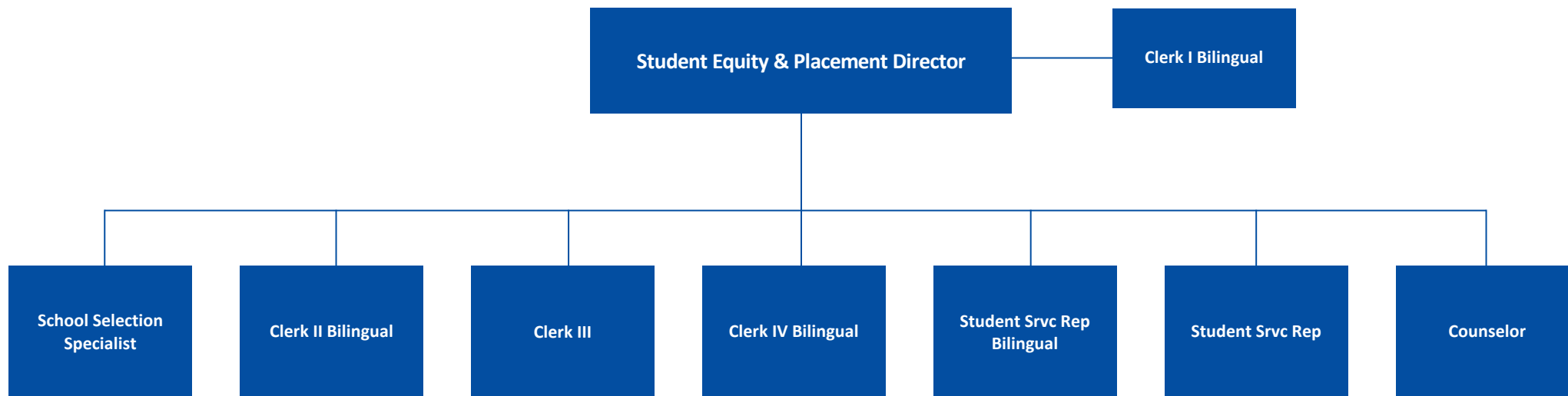


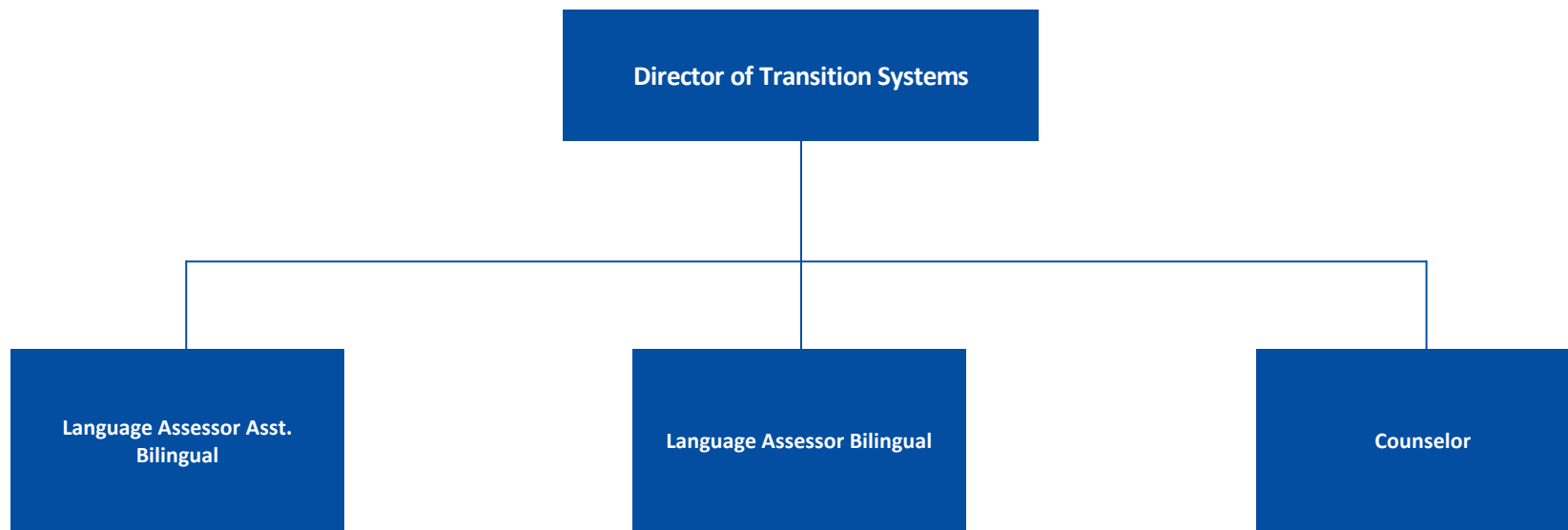


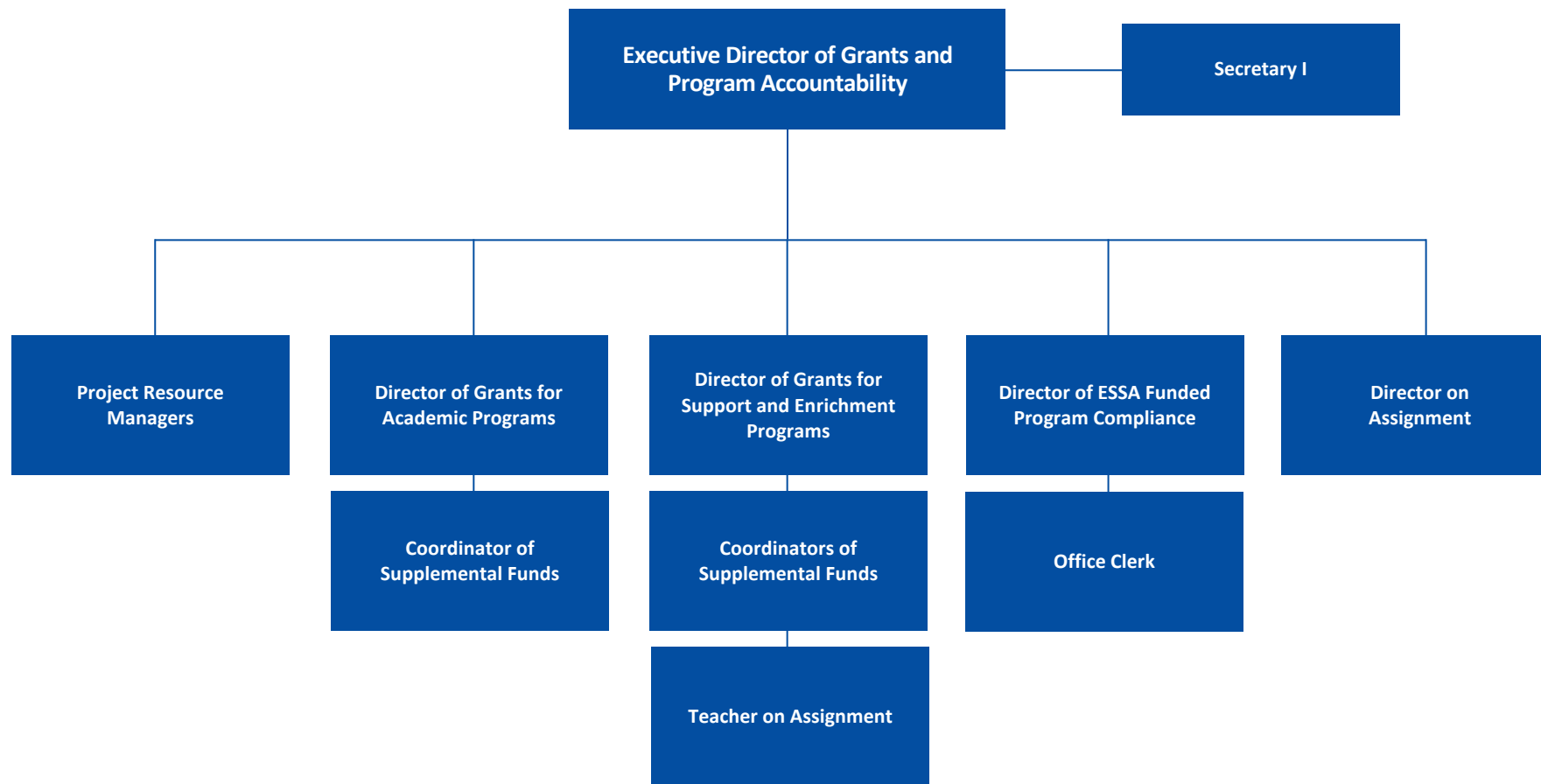


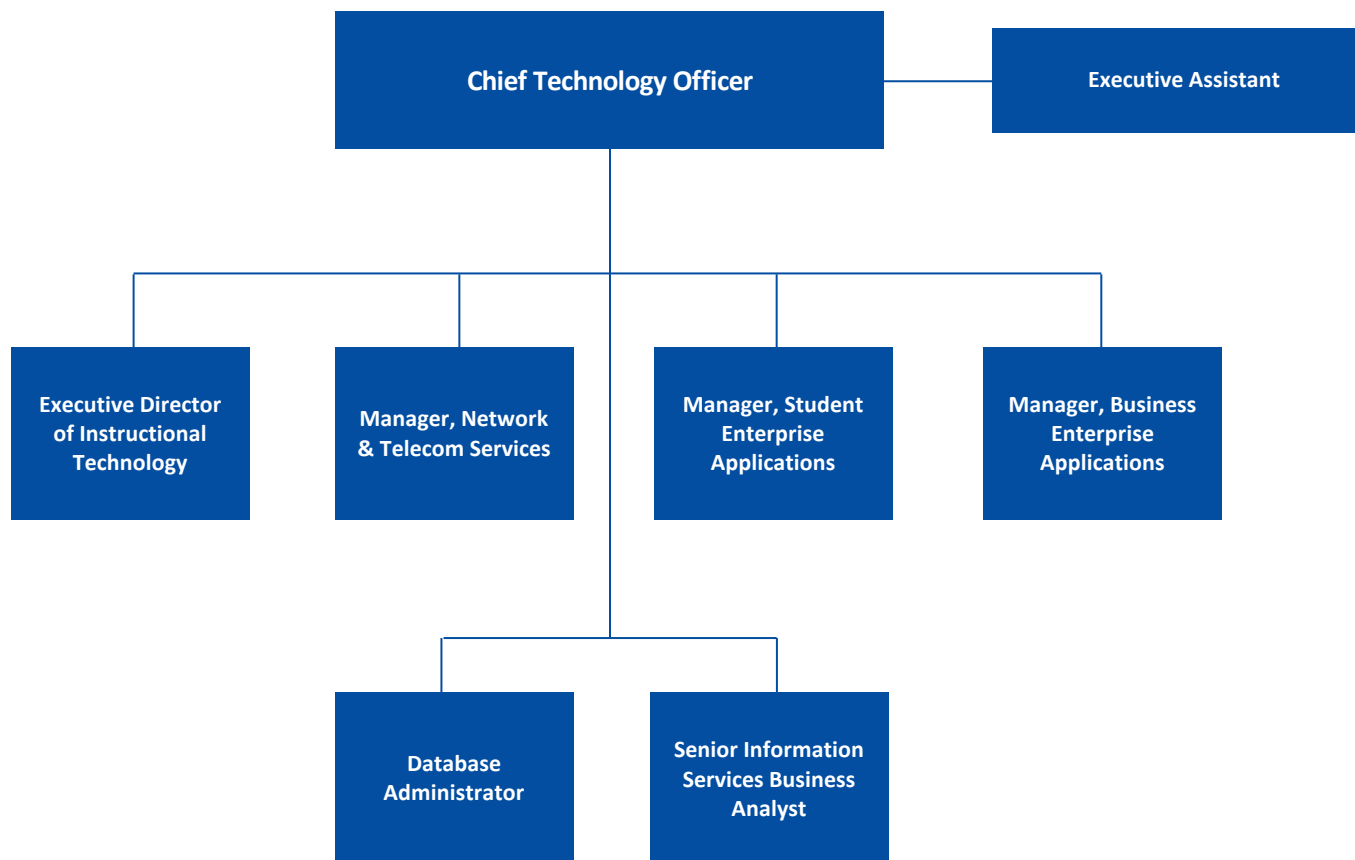








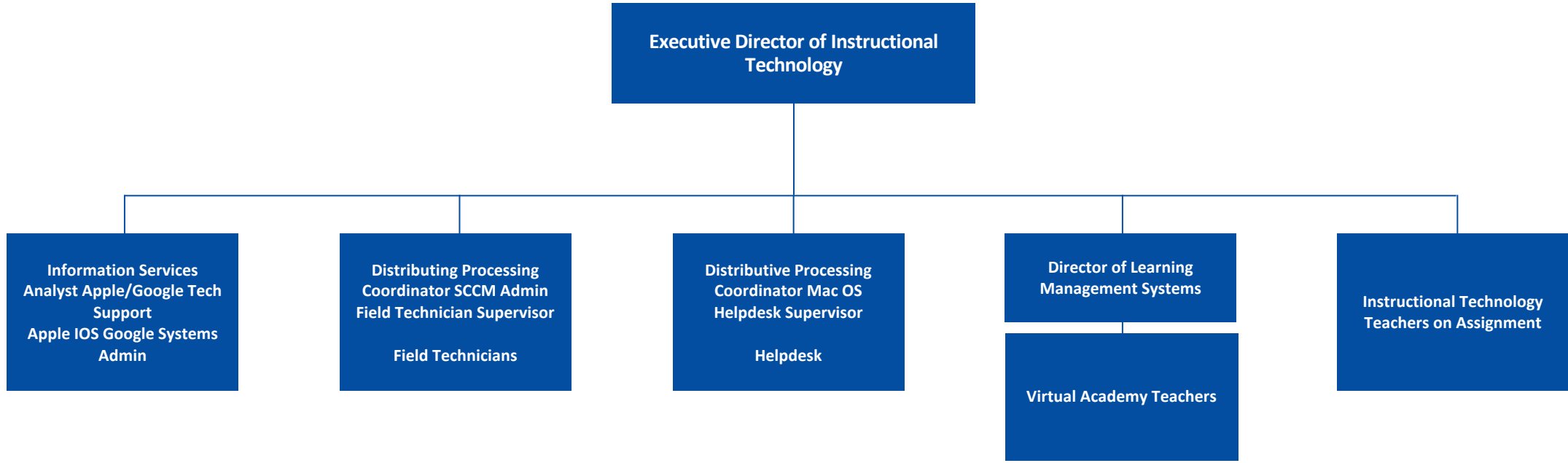






# Department of Information Management & Technology

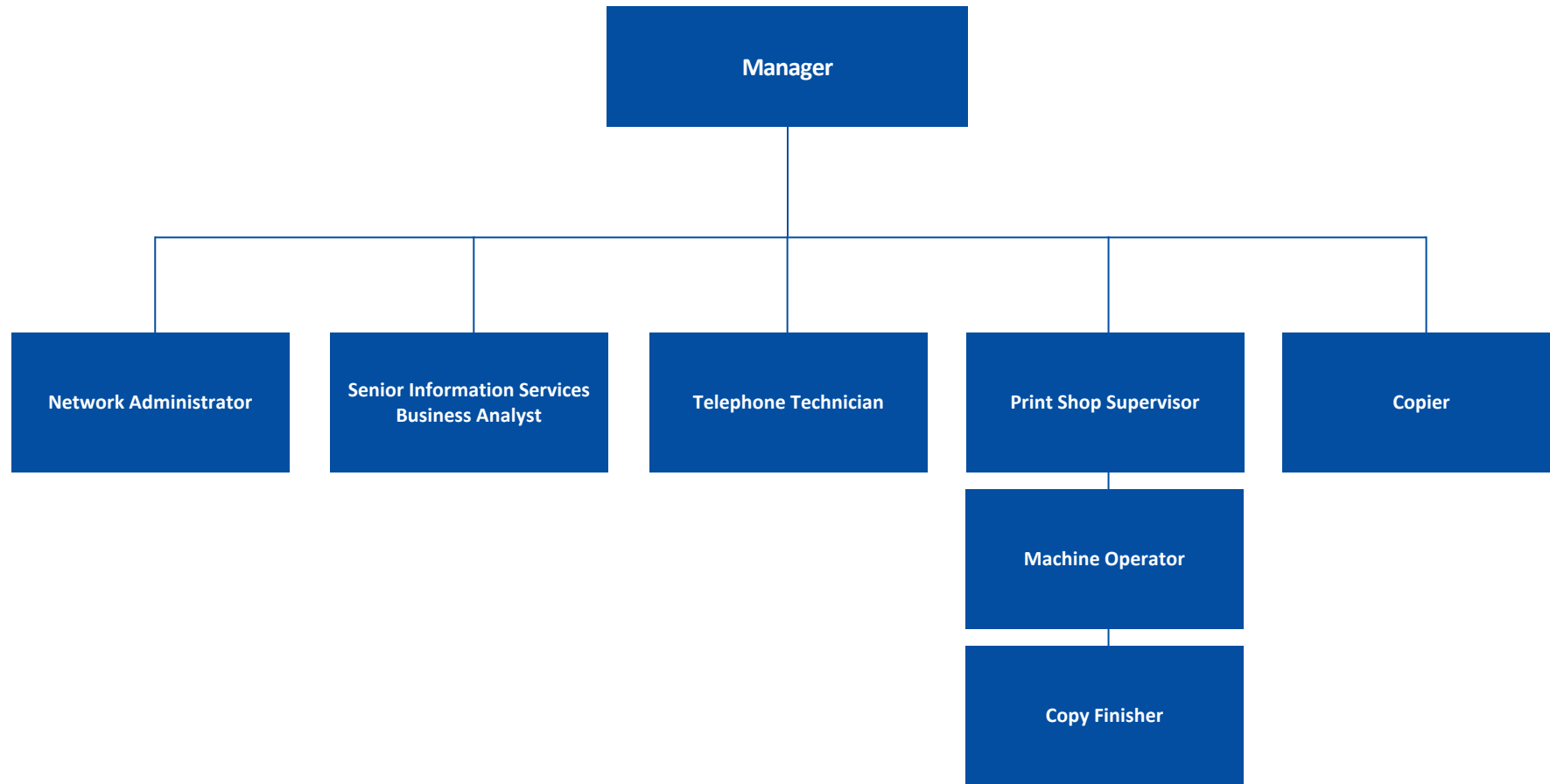
## Instructional Technology, Virtual Academy, Help Desk, School Technicians





# Department of Information Management & Technology

## Network Infrastructure

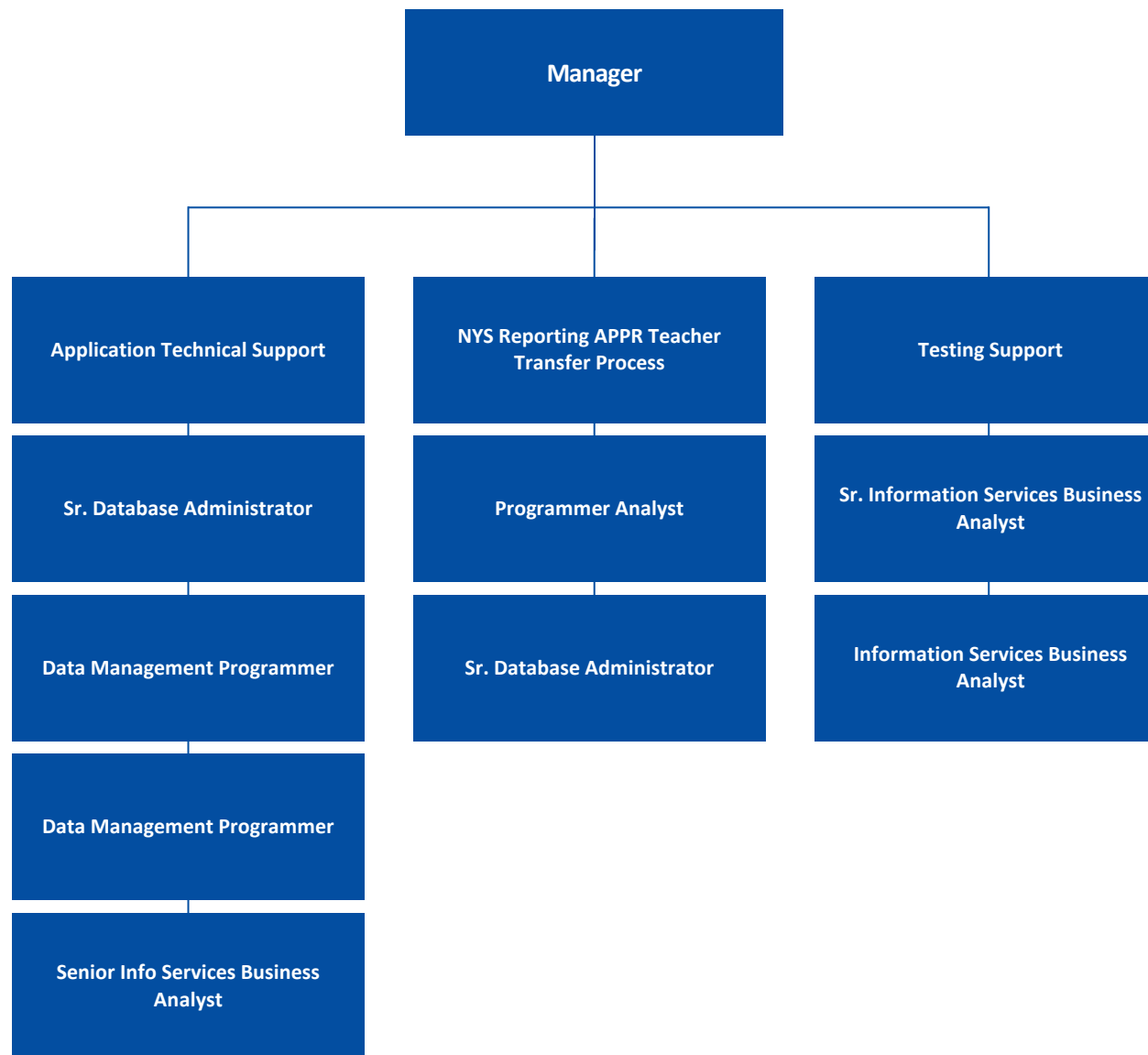






# Department of Information Management & Technology

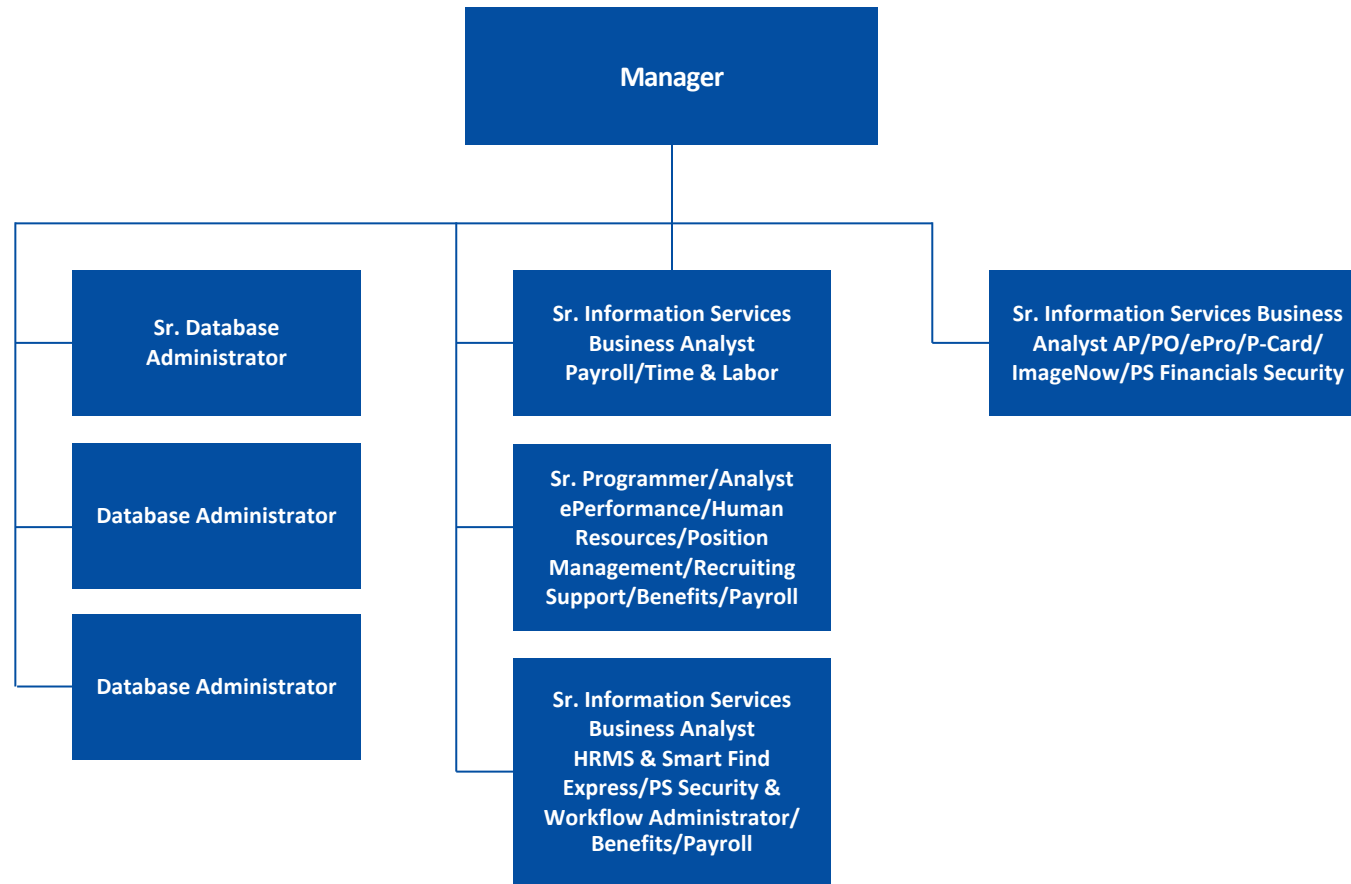
## Student Enterprise Applications

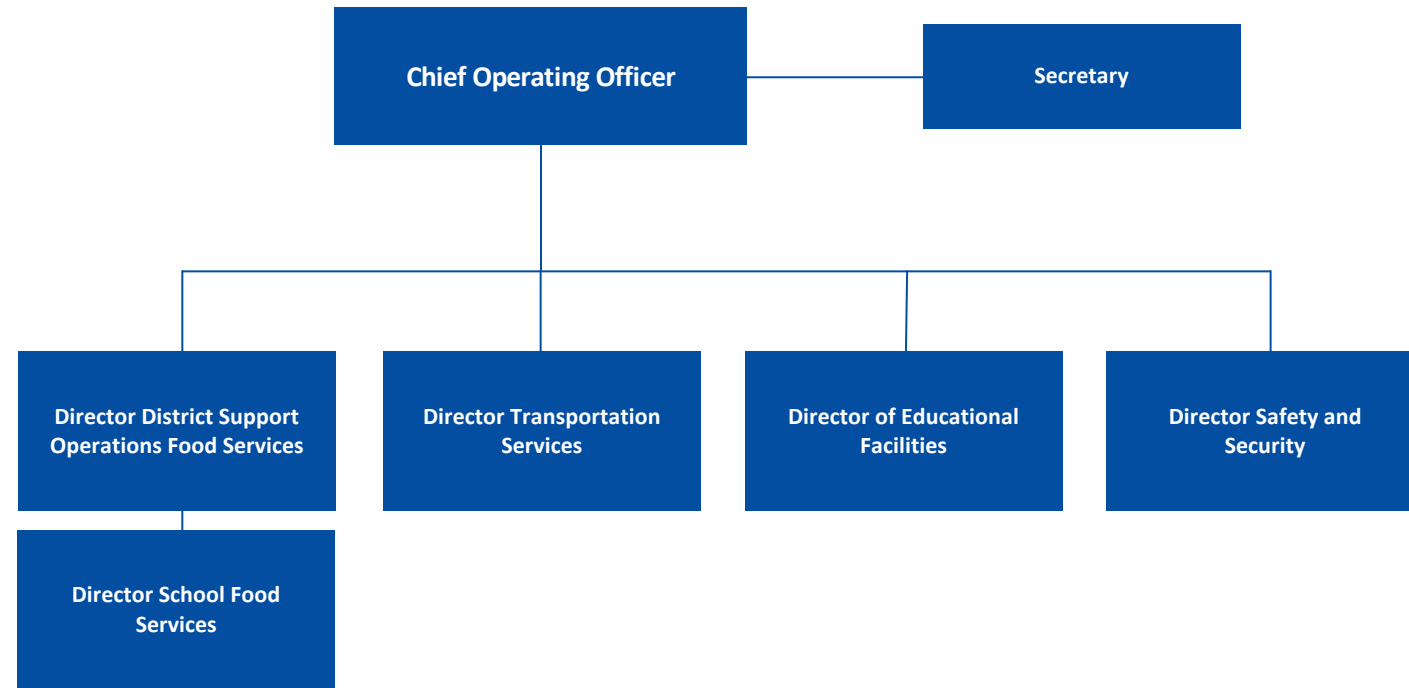


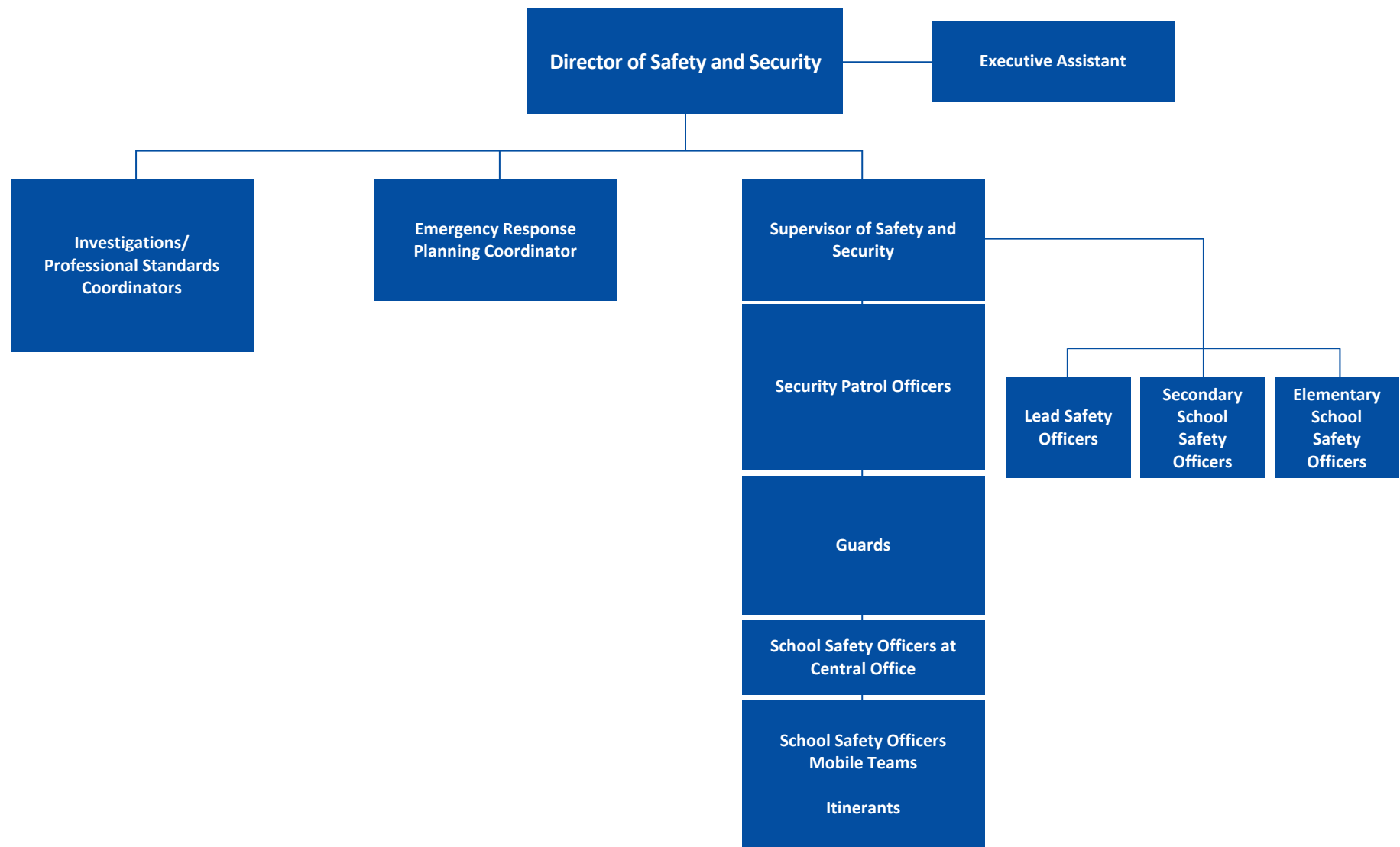


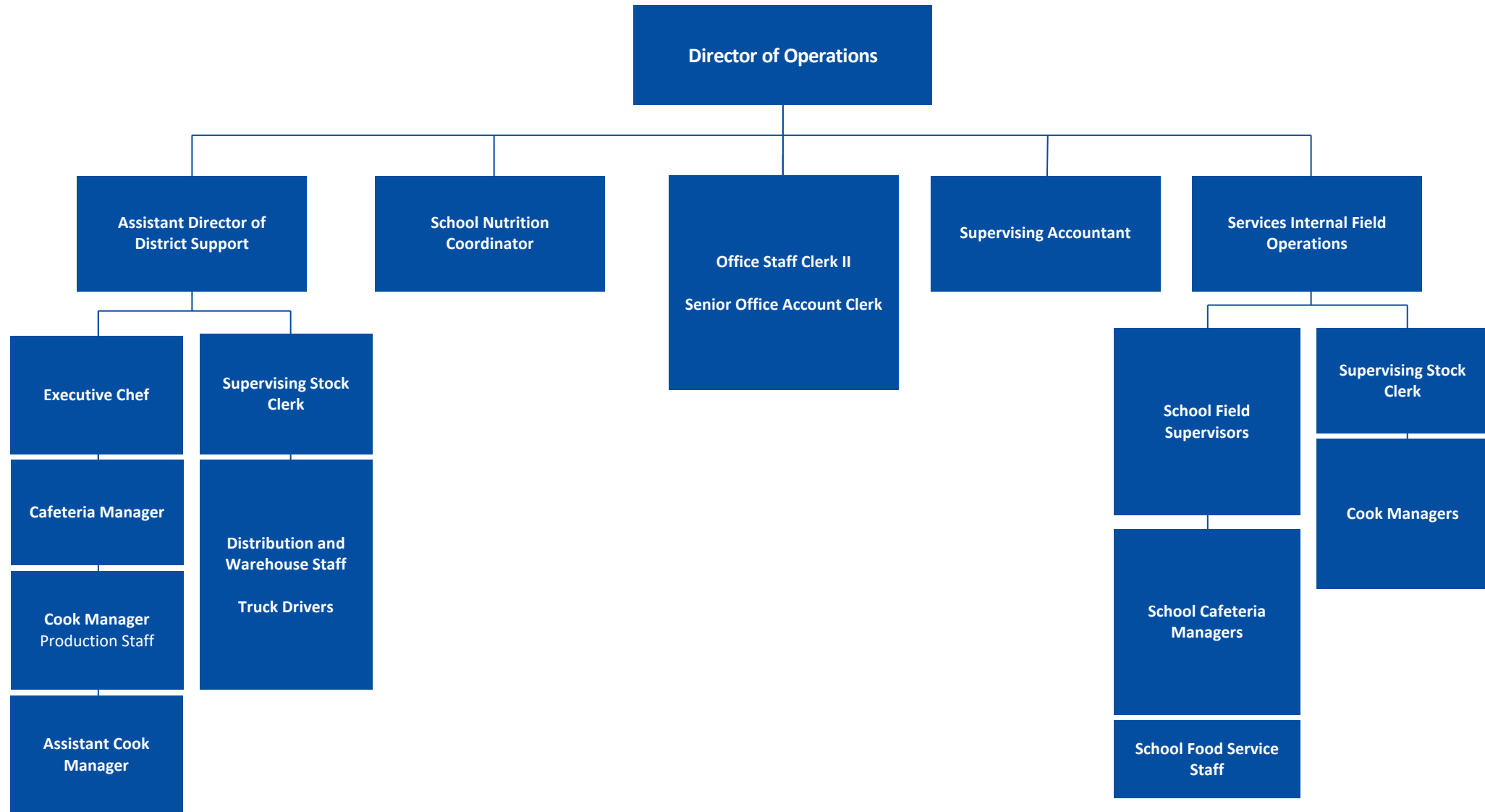
# Department of Information Management & Technology

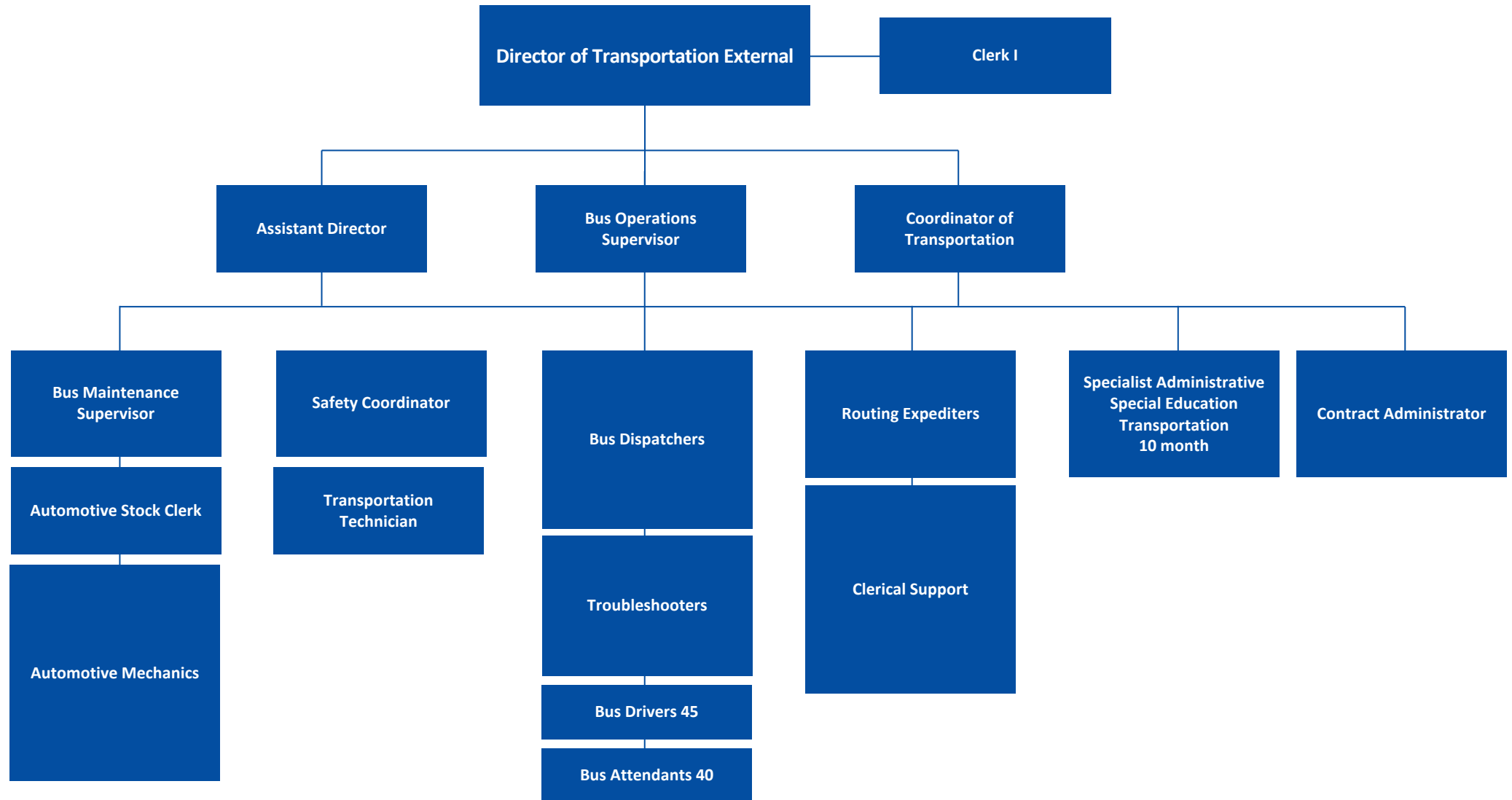
## Business Enterprise Applications

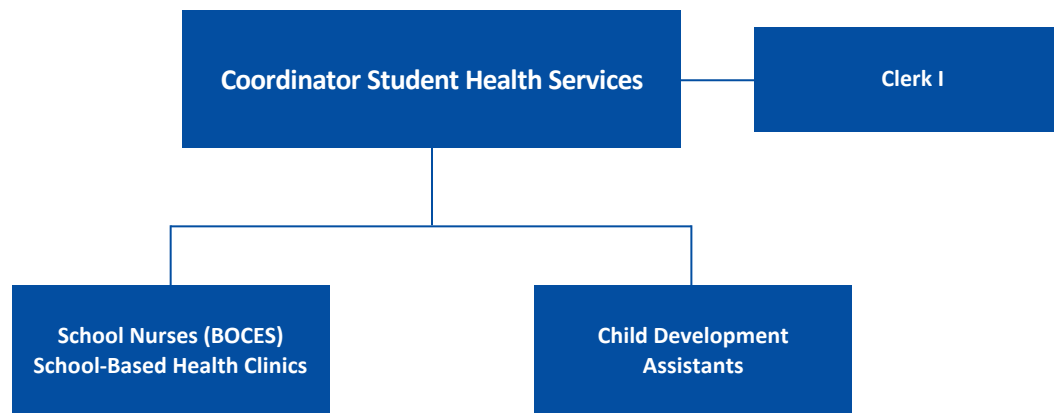






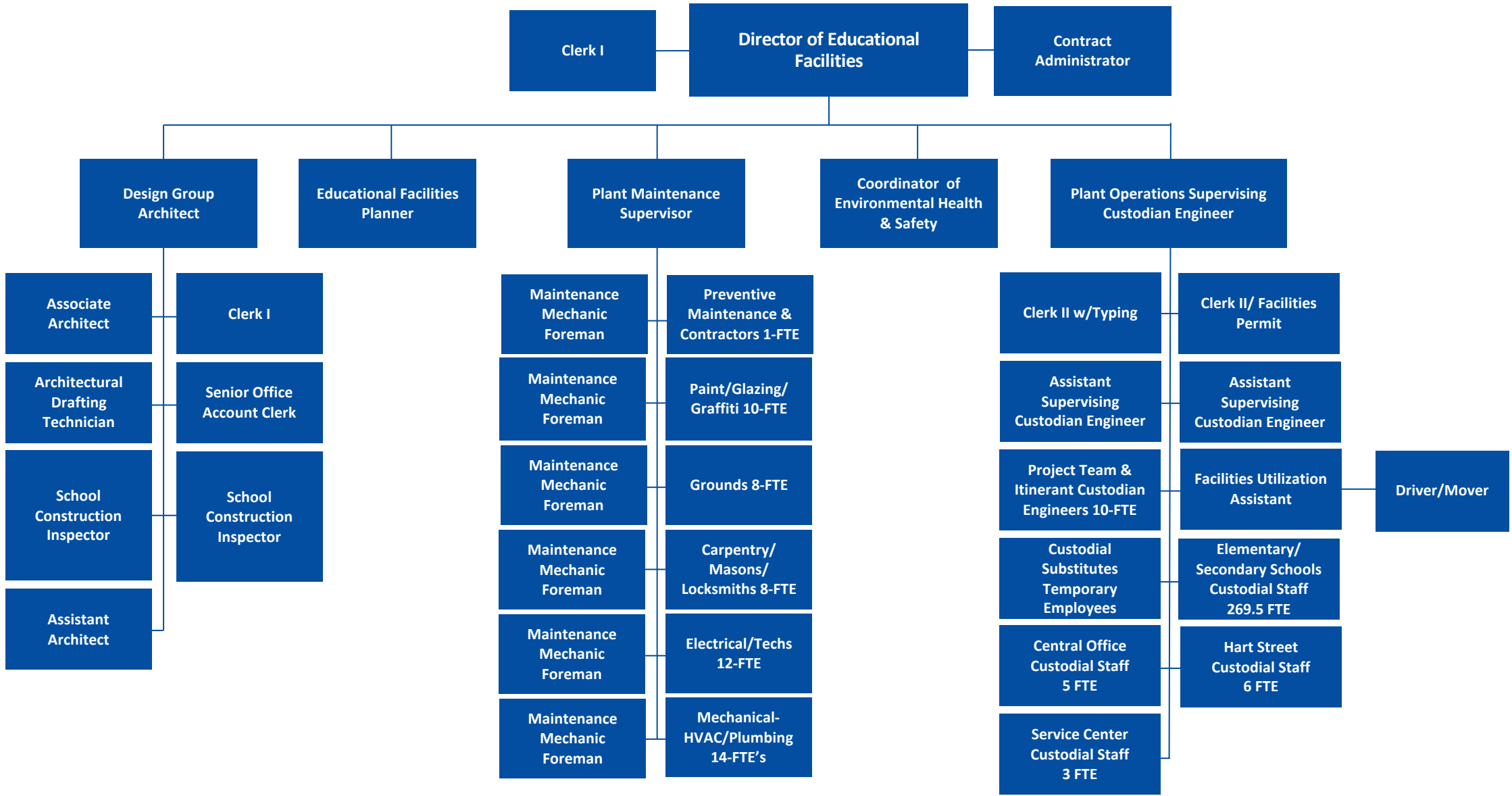








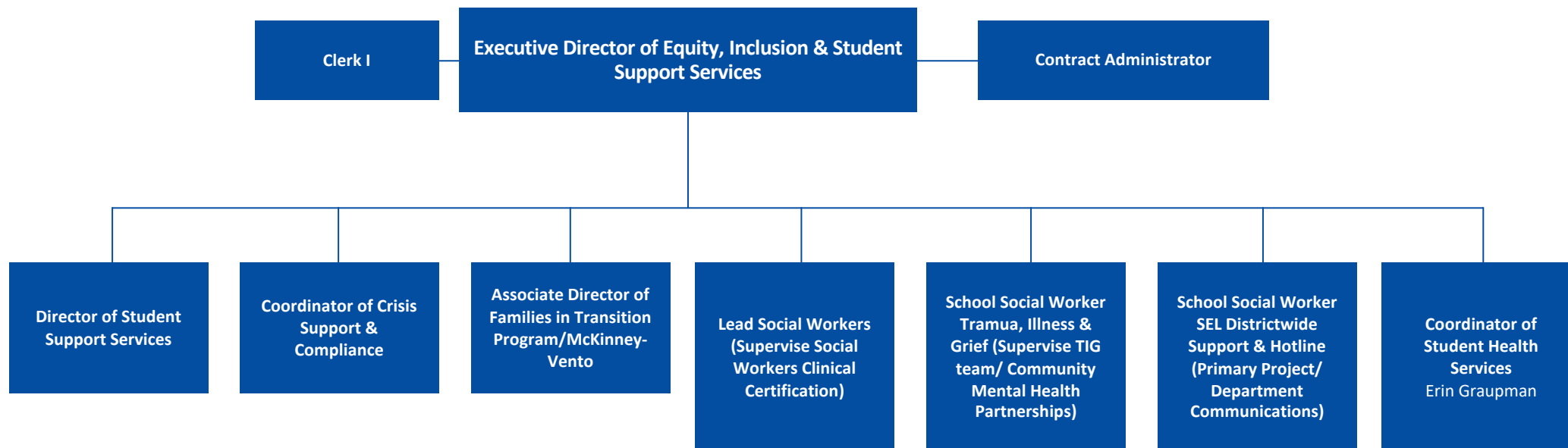
# Department of Educational Facilities

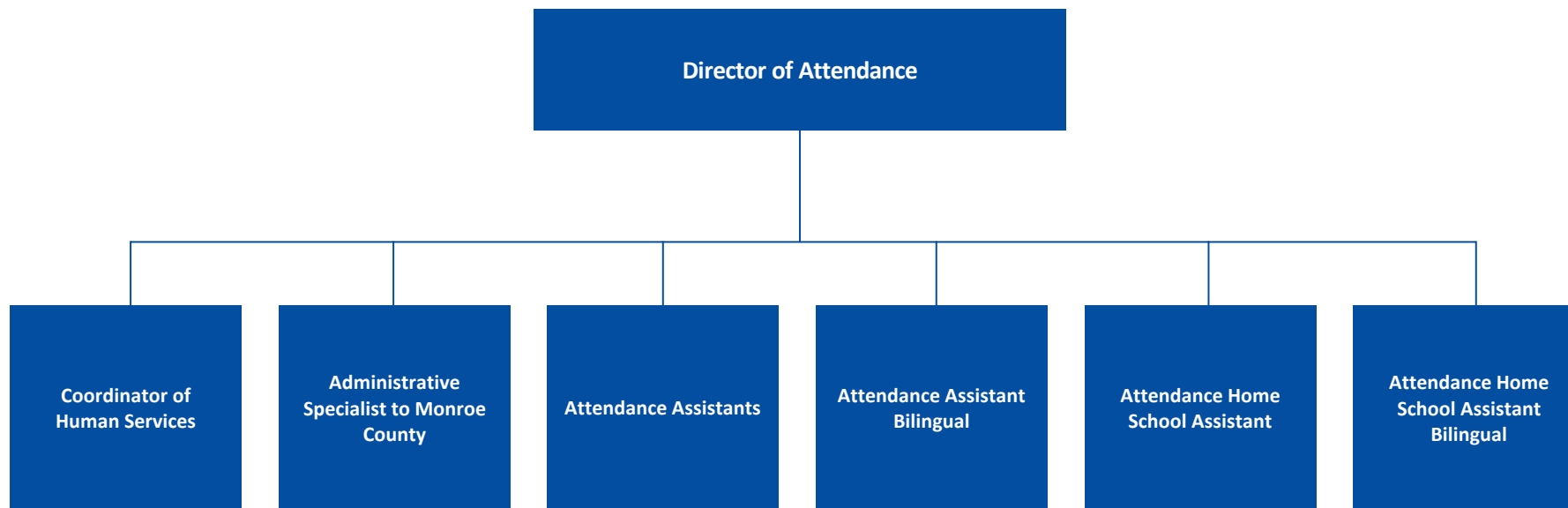


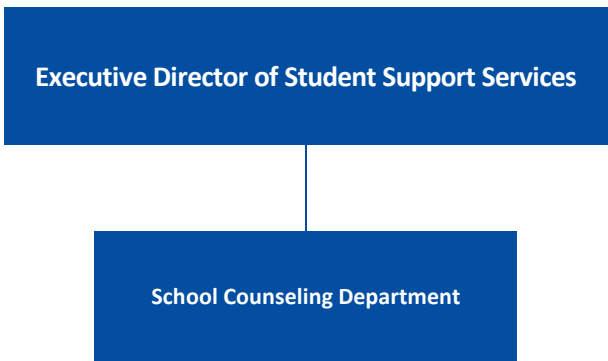


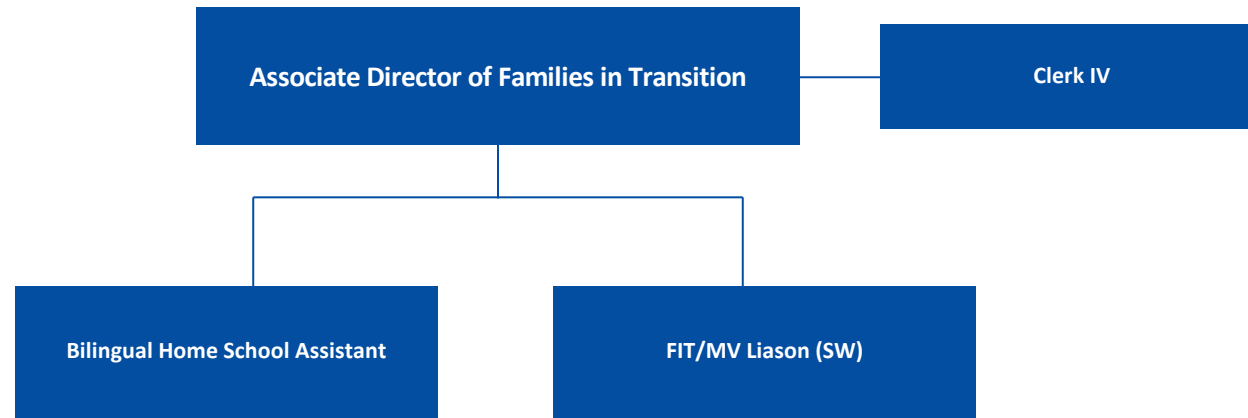


# Department of Equity, Inclusion, & Student Support Services











# Department of Strategic and Community Partnerships

