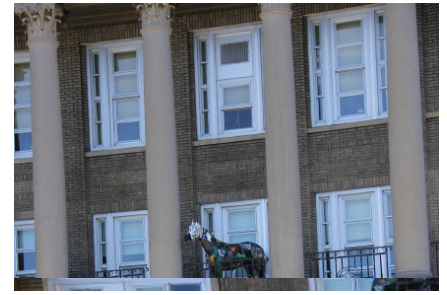


SCHOOL PROFILES AND BUDGETS 2019 - 20 PROPOSED BUDGET

Principal Sandra Chevalier-Blackman

School 66  
James Monroe High School

Mission: As Ambassadors of diversity, the Monroe family is on a mission to learn, work, and contribute to our community.



164 Alexander St. 14607

**POSITION INFORMATION (FTEs)**

	2018-19	2019-20
Teachers	111.5	92.3
Principals/AP/AD	10.0	10.0
Other Instructional	23.5	19.3
Non-instructional	34.0	33.0
<b>Total</b>	<b>179.0</b>	<b>154.6</b>
Pupil-Teacher Ratio	7.4 : 1	9.3 : 1
Pupil-Other-Staff Ratio	12.3 : 1	13.8 : 1
<b>Total Pupil-Staff Ratio</b>	<b>4.6 : 1</b>	<b>5.5 : 1</b>

**Student Enrollment**

Total Enrollment	828	858
------------------	-----	-----

**BUDGET ALLOCATIONS by ACCOUNT**

Major Expenditures	2018-19	2019-20
Salary Compensation	\$ 10,600,125	\$ 9,134,722
Other Compensation	306,659	7,500
Fixed Obligation/Variability	6,865	6,000
Cash Capital Outlays	12,770	7,270
Facilities and Related	88,788	77,906
Technology	-	-
Other Variable Expenses	28,829	226,100
<b>Total</b>	<b>\$ 11,044,036</b>	<b>\$ 9,459,498</b>

**Cost Per Student**

	2018-19	2019-20
	\$ 13,338	\$ 11,025

**FUNDING SOURCE**

	2018-19	2019-20
0000: General Purpose	\$ 4,705,635	\$ 3,656,663
0200: TITLE IIA TEACH/PRIN TRNG/RI	\$ 35,198	\$ 30,192
0229: Title I School Support	\$ 7,614	\$ -
0236: Title I - School Improvement	\$ 257,098	\$ 306,900
0251: Title I - Parent Involvement	\$ 7,434	\$ -
0305: IDEA SUPPORT SVC & SECT 611	\$ 759,704	\$ 525,416
1155: COMMUNITY SCHOOLS SET-ASIE	\$ -	\$ 80,477
1199: English Language Learning	\$ 1,304,355	\$ 1,051,641
1300: Club Advisor Stipends	\$ 9,608	\$ -
1396: District Initiative Budgets	\$ -	\$ 224,000
1501: Cntrl Alloc-Specialized Servcs	\$ 945,814	\$ 1,006,053
1502: Cntrl Alloc-School Admin	\$ 115,102	\$ 140,629
1503: Cntrl Alloc-Custodial	\$ 410,373	\$ 410,103
1504: Cntrl Alloc-Misc School-Based	\$ 425,049	\$ 382,155
1505: Cntrl Alloc-Building Subs	\$ 334,711	\$ 44,215
1506: Cntrl Alloc-Pupil Services	\$ 206,645	\$ 214,669
1507: Cntrl Alloc-Security Staff	\$ 229,574	\$ 222,327
1508: Cntrl Alloc-Librarians	\$ 54,668	\$ 65,677
1509: Cntrl Alloc-ESOL	\$ 680,586	\$ 656,770
1511: Cntrl Alloc-Counselors	\$ 430,559	\$ 328,385
1512: Instructional Operating Suppor	\$ 865	\$ -
4003: Consumer Science & Technology	\$ 1,355	\$ -
4515: C4E - Extended Day Program	\$ 87,548	\$ 77,196
4528: C4E - In-School Suspension	\$ 34,541	\$ 36,031
<b>Total</b>	<b>\$ 11,044,036</b>	<b>\$ 9,459,498</b>

**Grades 3 – 8 Percent scoring in Performance Levels 3 & 4**

	2015-2016	2016-2017	2017-2018
ELA	3.4%	4.6%	5.7%
Math	1.5%	1.6%	1.3%

**Graduation Rate**

	2015-2016 (2012 Cohort)	2016-2017 (2013 Cohort)	2017-2018 (Cohort 2014)
August Graduation Rate	50.2%	49.5%	47.3%

**Average Daily Attendance (ADA)**

	2015-2016	2016-2017	2017-2018
ADA	80.8%	79.3%	77.7%

**BEDS Enrollment by Student Classification**

Status	2015-2016	2016-2017	2017-2018
English Language Learners	214	197	198
Students with Disabilities	325	327	359
General Education	839	726	655
Economically Disadvantaged	996	877	808
<b>Total Enrollment</b>	<b>1,053</b>	<b>923</b>	<b>853</b>

**Accountability Status**

	2016-2017	2017-2018	2018-2019
Accountability Designation	Priority	Priority	Targeted Support and Improvement

Note: Numbers have been rounded for presentation.