



Dear Clients,

Welcome to fall! OMNI & TSACG is pleased to provide your organization with its Report Card detailing your 2021 third quarter plan administration activity. This report card gives you a snap shot of your plan health and the administration over the past twelve months. As we are getting toward the end of the year, please start to look at your 2022 payroll schedules and send them to us so that we can ensure the proper remittance of your employee's contributions. OMNI & TSACG continue to integrate and have made great strides in how we can enhance your organization's experience and continue to provide you with top quality administration. If you have any questions about the above or anything 403(b)/457(b) related, please contact your Client Relations Manager.

Sincerely,

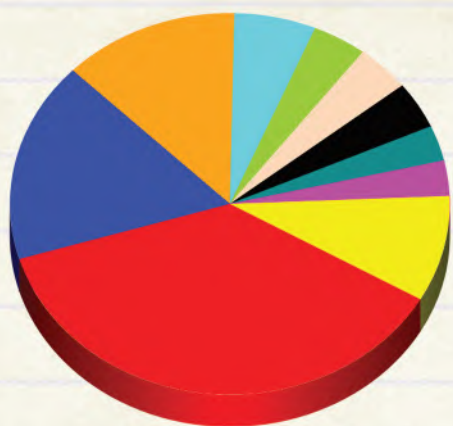
Sarah Breiner

Sarah Breiner, Managing Director & General Counsel

Total Contributing Participants

2,830

Participation by Service Provider



- Equitable (formerly) - 37%
- The Legend Gro - 17%
- Aspire Financi - 13%
- Invesco Oppenh - 6%
- MetLife (FC) - 4%
- Security Benef - 4%
- Fidelity Manag - 4%
- American Fund/ - 3%
- Fiduciary Trus - 3%
- Others - 9%

* Contributions Remitted to Service Providers This Quarter

Equitable (formerly)	\$596,806.00
The Legend Group	\$365,725.00
Aspire Financial	\$402,336.00
Invesco OppenheimerFunds	\$177,739.00
MetLife (FC)	\$136,126.00

Total Plan Assets

\$368,480,158.72

*Total Plan Assets by Reporting Service Provider

Equitable (formerly)	\$77,997,260.37
The Legend Group	\$94,039,371.58
Aspire Financial	Not Reporting
Invesco OppenheimerFunds	\$48,209,394.09
MetLife (FC)	Not Reporting

Salary Reduction Agreements Processed

This Quarter	Last 12 Months
252	883

New Accounts Opened

This Quarter	Last 12 Months
42	207

Transactions Processed - Last 12 Months

Distributions	475
Loans	145
Hardships	30
Exchanges/Transfers	256
QDRO's	8
TOTAL	914

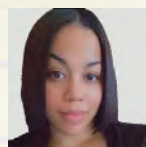
Payroll Schedules on Record

Representation of future payroll dates on file with OMNI.



Dedicated Specialists

Jamila McDuffie
Client Relations Manager
Ext. 106



Kristin Clements
Remittance Specialist
Ext. 132

* Plan asset and remittance information is provided for the five most utilized service providers. Asset information originates from industry standard SPARK file transmission. The frequency of SPARK data transmission varies and some providers do not utilize SPARK data. Accordingly, this data is intended for general guidance.