

# UNIT 5: INFORMATIVE WRITING

	Day 1	Day 2	Day 3	Day 4	Day 5
<b>Lesson 21</b> Problem/ Solution Paragraph	<b>Introduce the Model</b> (T37) Projectable, Reader's Notebook, myWriteSmart*, CCWH*	<b>Trait: Elaboration</b> (T47) Connect to Literature, Reader's Notebook	<b>Prewrite</b> (T59) Connect to Literature, Projectable, Reader's Notebook	<b>Draft</b> (T69) Projectable, Reader's Notebook	<b>Revise and Edit</b> (T76) Analyze the Model Projectable, Writing Rubric, Editing Checklist, Student Book, Make Clean Copy
<b>Lesson 22</b> Compare/ Contrast Paragraph	<b>Introduce the Model</b> (T137) Projectable, Reader's Notebook	<b>Trait: Evidence</b> (T147) Connect to Literature, Reader's Notebook	<b>Prewrite</b> (T159) Projectable, Reader's Notebook	<b>Draft</b> (T169) Projectable, Reader's Notebook	<b>Revise and Edit</b> (T176) Analyze the Model Projectable, Writing Rubric, Editing Checklist, Student Book, Make Clean Copy
<b>Lesson 23</b> Informational Paragraph	<b>Introduce the Model</b> (T237) Projectable, Reader's Notebook	<b>Trait: Elaboration</b> (T247) Connect to Literature, Reader's Notebook	<b>Prewrite</b> (T259) Connect to Literature, Projectable, Reader's Notebook	<b>Draft</b> (T269) Projectable, Reader's Notebook	<b>Revise and Edit</b> (T276) Analyze the Model Projectable, Writing Rubric, Editing Checklist, Student Book, Make Clean Copy
<b>Lesson 24</b> Research Report	<b>Introduce the Model</b> (T337) Projectable, Reader's Notebook	<b>Trait: Evidence</b> (T347) Connect to Literature, Reader's Notebook	<b>Prewrite</b> (T359) Reader's Notebook	<b>Prewrite</b> (T369) Projectable, Reader's Notebook	<b>Revise and Edit</b> (T376) Analyze the Model Writing Rubric, Student Book
<b>Lesson 25</b> Research Report	<b>Introduce the Model</b> (T435) Projectable, Reader's Notebook	<b>Trait: Elaboration</b> (T445) Connect to Literature, Reader's Notebook	<b>Draft</b> (T455) Reader's Notebook	<b>Drafting and Revising</b> (T465) Reader's Notebook	<b>Revise and Edit   Trait: Conventions</b> (T472) Analyze the Model Projectable, Writing Rubric, Editing Checklist, Student Book

# UNIT 6: OPINION (ARGUMENTATIVE) WRITING

	Day 1	Day 2	Day 3	Day 4	Day 5
<b>Lesson 26</b> Response Poem	<b>Introduce the Model</b> (T39) Projectable, Reader's Notebook, myWriteSmart*, CCWH*	<b>Trait: Elaboration</b> (T49) Connect to Literature, Reader's Notebook	<b>Prewrite</b> (T59) Projectable, Reader's Notebook	<b>Draft</b> (T69) Projectable, Reader's Notebook	<b>Revise and Edit</b> (T76) Analyze the Model Projectable, Writing Rubric, Editing Checklist, Student Book, Make Clean Copy
<b>Lesson 27</b> Opinion Paragraph	<b>Introduce the Model</b> (T137) Projectable, Reader's Notebook	<b>Trait: Organization</b> (T147) Connect to Literature, Reader's Notebook	<b>Prewrite</b> (T159) Connect to Literature, Projectable, Reader's Notebook	<b>Draft</b> (T161) Projectable, Reader's Notebook	<b>Revise and Edit</b> (T176) Analyze the Model Projectable, Writing Rubric, Editing Checklist, Student Book, Make Clean Copy
<b>Lesson 28</b> Response Paragraph	<b>Introduce the Model</b> (T233) Projectable, Reader's Notebook	<b>Trait: Evidence</b> (T243) Connect to Literature, Reader's Notebook	<b>Prewrite</b> (T253) Connect to Literature, Projectable, Reader's Notebook	<b>Draft</b> (T265) Connect to Literature, Projectable, Reader's Notebook	<b>Revise and Edit</b> (T272) Analyze the Model Projectable, Writing Rubric, Editing Checklist, Student Book, Make Clean Copy
<b>Lesson 29</b> Response Essay	<b>Introduce the Model</b> (T333) Projectable, Reader's Notebook	<b>Trait: Evidence</b> (T343) Connect to Literature, Reader's Notebook	<b>Prewrite</b> (T355) Connect to Literature, Reader's Notebook	<b>Prewrite</b> (T365) Connect to Literature, Projectable, Reader's Notebook	<b>Revise and Edit</b> (T372) Analyze the Model Writing Rubric, Student Book
<b>Lesson 30</b> Response Essay	<b>Introduce the Model</b> (T433) Projectable, Reader's Notebook	<b>Trait: Elaboration</b> (T443) Connect to Literature, Reader's Notebook	<b>Draft</b> (T455) Connect to Literature, Reader's Notebook	<b>Drafting and Revising</b> (T465) Reader's Notebook	<b>Revise and Edit</b> <b>Trait: Conventions</b> (T472) Analyze the Model Projectable, Writing Rubric, Editing Checklist, Student Book

Connect with us:



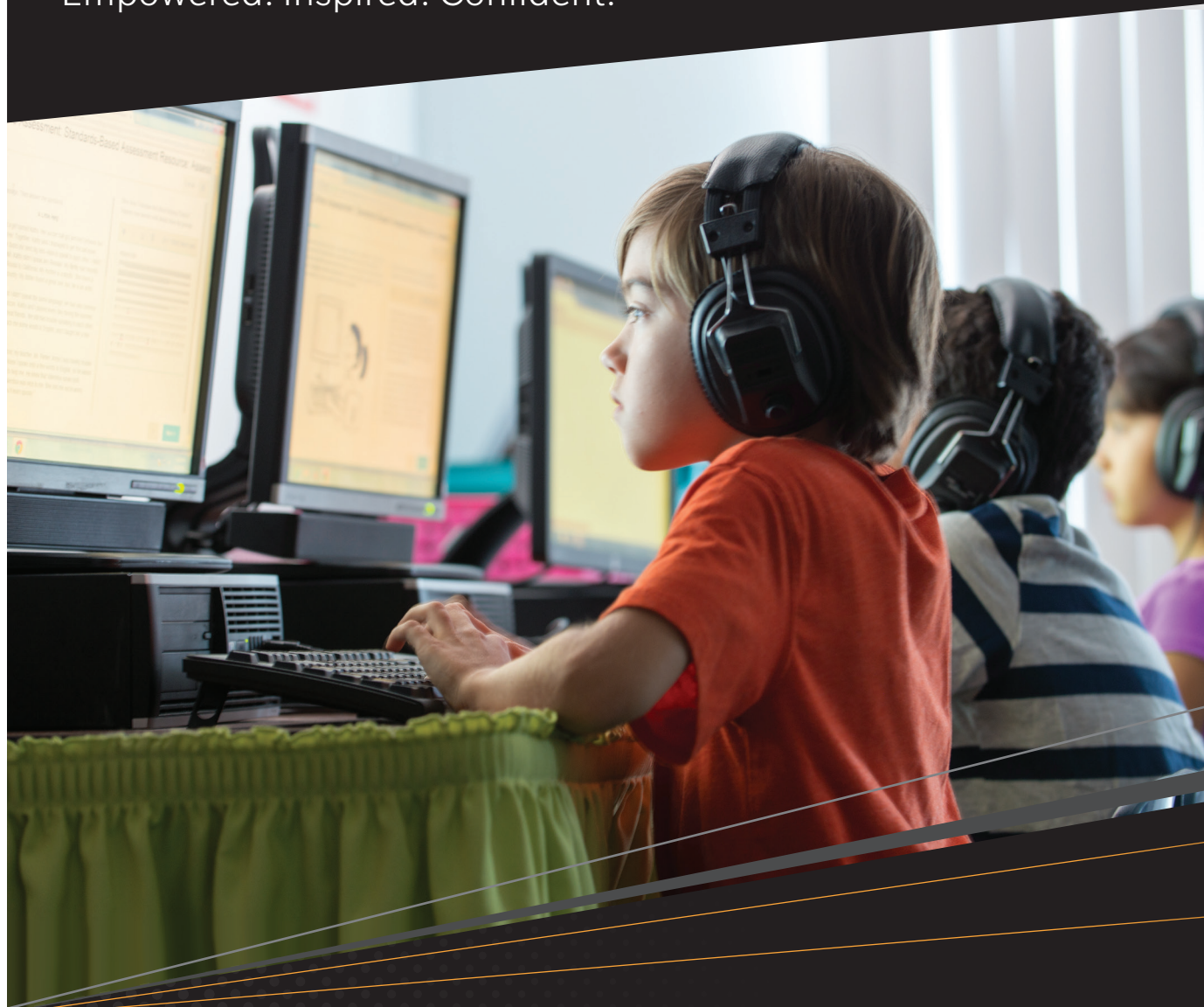
\*Additional Writing Support provided Daily in the Common Core Writing Handbook (CCWH).

Houghton Mifflin Harcourt™ is a trademark of Houghton Mifflin Harcourt. © Houghton Mifflin Harcourt. All rights reserved. Printed in the U.S.A. 10/15 MS157721c

# JOURNEYS

**Every Reader**

Empowered. Inspired. Confident.



**WRITING**  
**SCOPE AND SEQUENCE**

**2**

**UNIT 1: NARRATIVE WRITING**

	Day 1	Day 2	Day 3	Day 4	Day 5
<b>Lesson 1</b> <i>Sentences that Tell a True Story</i>	<b>Introduce the Model</b> (T33) Projectable, Reader's Notebook, myWriteSmart*, CCWH*	<b>Trait: Elaboration</b> (T43) Connect to Literature, Reader's Notebook	<b>Prewrite</b> (T55) Connect to Literature, Projectable, Reader's Notebook	<b>Draft</b> (T65) Projectable, Reader's Notebook	<b>Revise and Edit</b> (T72) Analyze the Model Projectable, Writing Rubric, Editing Checklist, Student Book, Make a Clean Copy
<b>Lesson 2</b> <i>Friendly Letter</i>	<b>Introduce the Model</b> (T131) Projectable, Reader's Notebook	<b>Trait: Development</b> (T141) Connect to Literature, Reader's Notebook	<b>Prewrite</b> (T153) Projectable, Reader's Notebook	<b>Draft</b> (T163) Projectable, Reader's Notebook	<b>Revise and Edit</b> (T170) Analyze the Model Projectable, Writing Rubric, Editing Checklist, Student Book, Make a Clean Copy
<b>Lesson 3</b> <i>Sentences that Describe</i>	<b>Introduce the Model</b> (T229) Projectable, Reader's Notebook	<b>Trait: Elaboration</b> (T239) Connect to Literature, Reader's Notebook	<b>Prewrite</b> (T251) Projectable, Reader's Notebook	<b>Draft</b> (T261) Projectable, Reader's Notebook	<b>Revise and Edit</b> (T268) Analyze the Model Projectable, Writing Rubric, Editing Checklist, Student Book, Make a Clean Copy
<b>Lesson 4</b> <i>True Story</i>	<b>Introduce the Model</b> (T331) Projectable, Reader's Notebook	<b>Trait: Development</b> (T341) Connect to Literature, Reader's Notebook	<b>Prewrite</b> (T353) Reader's Notebook	<b>Prewrite</b> (T363) Projectable, Reader's Notebook	<b>Revise and Edit</b> (T370) Analyze the Model Projectable, Writing Rubric, Student Book
<b>Lesson 5</b> <i>True Story</i>	<b>Introduce the Model</b> (T433) Projectable, Reader's Notebook	<b>Trait: Organization</b> (T443) Connect to Literature, Reader's Notebook	<b>Draft</b> (T453) Connect to Literature, Reader's Notebook	<b>Draft/Revise</b> (T463) Reader's Notebook	<b>Revise and Edit</b> <b>Trait: Conventions</b> (T470) Analyze the Model Projectable, Writing Rubric, Editing Checklist, Student Book

**UNIT 2: INFORMATIVE WRITING**

	Day 1	Day 2	Day 3	Day 4	Day 5
<b>Lesson 6</b> <i>Informational Paragraph</i>	<b>Introduce the Model</b> (T35) Projectable, Reader's Notebook, myWriteSmart*, CCWH*	<b>Trait: Purpose</b> (T45) Connect to Literature, Reader's Notebook	<b>Prewrite</b> (T55) Connect to Literature, Projectable, Reader's Notebook	<b>Draft</b> (T67) Projectable, Reader's Notebook	<b>Revise and Edit</b> (T74) Analyze the Model Projectable, Writing Rubric, Editing Checklist, Student Book, Make a Clean Copy
<b>Lesson 7</b> <i>Informational Paragraph</i>	<b>Introduce the Model</b> (T137) Projectable, Reader's Notebook	<b>Trait: Organization</b> (T147) Connect to Literature, Reader's Notebook	<b>Prewrite</b> (T159) Connect to Literature, Projectable, Reader's Notebook	<b>Draft</b> (T169) Projectable, Reader's Notebook	<b>Revise and Edit</b> (T176) Analyze the Model Projectable, Writing Rubric, Editing Checklist, Student Book, Make a Clean Copy
<b>Lesson 8</b> <i>Informational Paragraph</i>	<b>Introduce the Model</b> (T235) Projectable, Reader's Notebook	<b>Trait: Evidence</b> (T245) Connect to Literature, Reader's Notebook	<b>Prewrite</b> (T257) Connect to Literature, Projectable, Reader's Notebook	<b>Draft</b> (T267) Projectable, Reader's Notebook	<b>Revise and Edit</b> (T274) Analyze the Model Projectable, Writing Rubric, Editing Checklist, Student Book, Make a Clean Copy
<b>Lesson 9</b> <i>Instructions</i>	<b>Introduce the Model</b> (T337) Projectable, Reader's Notebook	<b>Trait: Purpose</b> (T347) Reader's Notebook	<b>Prewrite</b> (T359) Reader's Notebook	<b>Prewrite</b> (T369) Projectable, Reader's Notebook	<b>Revise and Edit</b> (T376) Analyze the Model Writing Rubric, Student Book
<b>Lesson 10</b> <i>Instructions</i>	<b>Introduce the Model</b> (T437) Projectable, Reader's Notebook	<b>Trait: Elaboration</b> (T447) Connect to Literature, Reader's Notebook	<b>Draft</b> (T457) Reader's Notebook	<b>Drafting and Revising</b> (T467) Reader's Notebook	<b>Revise and Edit</b> <b>Trait: Conventions</b> (T474) Analyze the Model Projectable, Writing Rubric, Editing Checklist, Student Book

## UNIT 3: OPINION (ARGUMENTATIVE) WRITING

	Day 1	Day 2	Day 3	Day 4	Day 5
<b>Lesson 11</b> <i>Persuasive Letter</i>	<b>Introduce the Model</b> (T37) Projectable, Reader's Notebook, myWriteSmart*, CCWH*	<b>Trait: Purpose</b> (T47) Connect to Literature, Reader's Notebook	<b>Prewrite</b> (T57) Connect to Literature, Projectable, Reader's Notebook	<b>Draft</b> (T67) Projectable, Reader's Notebook	<b>Revise and Edit</b> (T74) Analyze the Model Projectable, Writing Rubric, Editing Checklist, Student Book, Make a Clean Copy
<b>Lesson 12</b> <i>Opinion Paragraph</i>	<b>Introduce the Model</b> (T131) Projectable, Reader's Notebook	<b>Trait: Organization</b> (T141) Connect to Literature, Reader's Notebook	<b>Prewrite</b> (T151) Projectable, Reader's Notebook	<b>Draft</b> (T161) Projectable, Reader's Notebook	<b>Revise and Edit</b> (T168) Analyze the Model Projectable, Writing Rubric, Editing Checklist, Student Book, Make a Clean Copy
<b>Lesson 13</b> <i>Persuasive Paragraph</i>	<b>Introduce the Model</b> (T229) Projectable, Reader's Notebook	<b>Trait: Elaboration</b> (T239) Connect to Literature, Reader's Notebook	<b>Prewrite</b> (T249) Projectable, Reader's Notebook	<b>Draft</b> (T259) Projectable, Reader's Notebook	<b>Revise and Edit</b> (T266) Analyze the Model Projectable, Writing Rubric, Editing Checklist, Student Book, Make a Clean Copy
<b>Lesson 14</b> <i>Persuasive Essay</i>	<b>Introduce the Model</b> (T327) Projectable, Reader's Notebook	<b>Trait: Purpose</b> (T337) Connect to Literature, Reader's Notebook	<b>Prewrite</b> (T347) Reader's Notebook	<b>Prewrite</b> (T357) Projectable, Reader's Notebook	<b>Revise and Edit</b> (T364) Analyze the Model Projectable, Writing Rubric, Student Book
<b>Lesson 15</b> <i>Persuasive Essay</i>	<b>Introduce the Model</b> (T427) Projectable, Reader's Notebook	<b>Trait: Organization</b> (T437) Connect to Literature, Reader's Notebook	<b>Draft</b> (T449) Connect to Literature, Reader's Notebook	<b>Drafting and Revising</b> (T459) Reader's Notebook	<b>Revise and Edit</b> <b>Trait: Conventions</b> (T466) Analyze the Model Projectable, Writing Rubric, Editing Checklist, Student Book

## UNIT 4: NARRATIVE WRITING

	Day 1	Day 2	Day 3	Day 4	Day 5
<b>Lesson 16</b> <i>Story Paragraph</i>	<b>Introduce the Model</b> (T39) Projectable, Reader's Notebook, myWriteSmart*, CCWH*	<b>Trait: Elaboration</b> (T49) Connect to Literature, Reader's Notebook	<b>Prewrite</b> (T59) Projectable, Reader's Notebook	<b>Draft</b> (T69) Projectable, Reader's Notebook	<b>Revise and Edit</b> (T76) Analyze the Model Projectable, Writing Checklist, Editing Checklist, Student Book, Make Clean Copy
<b>Lesson 17</b> <i>Story Paragraph</i>	<b>Introduce the Model</b> (T139) Projectable, Reader's Notebook	<b>Trait: Development</b> (T149) Connect to Literature, Reader's Notebook	<b>Prewrite</b> (T159) Connect to Literature, Projectable, Reader's Notebook	<b>Draft</b> (T169) Connect to Literature, Projectable, Reader's Notebook	<b>Revise and Edit</b> (T176) Analyze the Model Projectable, Writing Rubric, Editing Checklist, Student Book, Make Clean Copy
<b>Lesson 18</b> <i>Descriptive Paragraph</i>	<b>Introduce the Model</b> (T237) Projectable, Reader's Notebook	<b>Trait: Elaboration</b> (T247) Connect to Literature, Reader's Notebook	<b>Prewrite</b> (T259) Projectable, Reader's Notebook	<b>Draft</b> (T269) Projectable, Reader's Notebook	<b>Revise and Edit</b> (T76) Analyze the Model Projectable, Writing Rubric, Editing Checklist, Student Book, Make Clean Copy
<b>Lesson 19</b> <i>Fictional Story</i>	<b>Introduce the Model</b> (T339) Projectable, Reader's Notebook	<b>Trait: Organization</b> (T349) Reader's Notebook	<b>Prewrite</b> (T359) Reader's Notebook	<b>Prewrite</b> (T369) Connect to Literature, Projectable, Reader's Notebook	<b>Revise and Edit</b> (T376) Analyze the Model Writing Rubric
<b>Lesson 20</b> <i>Fictional Story</i>	<b>Introduce the Model</b> (T439) Projectable, Reader's Notebook	<b>Trait: Organization</b> (T449) Connect to Literature, Reader's Notebook	<b>Draft</b> (T459) Reader's Notebook	<b>Drafting and Revising</b> (T469) Connect to Literature, Reader's Notebook	<b>Revise and Edit</b> <b>Trait: Conventions</b> (T476) Analyze the Model Projectable, Writing Rubric, Editing Checklist, Student Book