

# UNIT 5: NARRATIVE WRITING

	Day 1	Day 2	Day 3	Day 4	Day 5
<b>Lesson 21</b> Story Sentences	<b>Introduce the Model</b> (T35) Projectable, myWriteSmart*, CCWH*	<b>Trait: Development</b> (T45) Connect to Literature, Projectable, Reader's Notebook	<b>Prewrite</b> (T57) Projectable, Reader's Notebook	<b>Draft</b> (T67) Connect to Literature, Projectable, Reader's Notebook	<b>Revise and Edit</b> (T74) Analyze the Model Projectable, Writing Checklist, Editing Checklist, Student Book, Make Clean Copy
<b>Lesson 22</b> Story Sentences	<b>Introduce the Model</b> (T135) Projectable	<b>Trait: Development</b> (T145) Connect to Literature, Projectable, Reader's Notebook	<b>Prewrite</b> (T157) Projectable, Reader's Notebook	<b>Draft</b> (T167) Connect to Literature, Projectable, Reader's Notebook	<b>Revise and Edit</b> (T174) Analyze the Model Projectable, Writing Checklist, Editing Checklist, Student Book, Make Clean Copy
<b>Lesson 23</b> Story Summary	<b>Introduce the Model</b> (T237) Projectable	<b>Trait: Organization</b> (T247) Connect to Literature, Projectable, Reader's Notebook	<b>Prewrite</b> (T259) Projectable, Reader's Notebook	<b>Draft</b> (T269) Connect to Literature, Projectable, Reader's Notebook	<b>Revise and Edit</b> (T276) Analyze the Model Projectable, Writing Checklist, Editing Checklist, Student Book, Make Clean Copy
<b>Lesson 24</b> Story	<b>Introduce the Model</b> (T341) Projectable	<b>Trait: Development</b> (T351) Connect to Literature, Projectable, Reader's Notebook	<b>Prewrite</b> (T363) Reader's Notebook	<b>Prewrite</b> (T373) Projectable, Reader's Notebook	<b>Revise and Edit</b> (T380) Analyze the Model Writing Checklist, Student Book
<b>Lesson 25</b> Story	<b>Introduce the Model</b> (T441) Projectable	<b>Trait: Conventions</b> (T451) Connect to Literature, Reader's Notebook	<b>Draft</b> (T463) Connect to Literature, Reader's Notebook	<b>Drafting and Revising</b> (T475) Connect to Literature, Reader's Notebook	<b>Revise and Edit</b> (T482) Analyze the Model Projectable, Writing Checklist, Student Book

# UNIT 6: OPINION (ARGUMENTATIVE) WRITING

	Day 1	Day 2	Day 3	Day 4	Day 5
<b>Lesson 26</b> Sentences	<b>Introduce the Model</b> (T37) Projectable, myWriteSmart*, CCWH*	<b>Trait: Conventions</b> (T47) Connect to Literature, Projectable, Reader's Notebook	<b>Prewrite</b> (T59) Projectable, Reader's Notebook	<b>Draft</b> (T69) Connect to Literature, Projectable, Reader's Notebook	<b>Revise and Edit</b> (T76) Analyze the Model Projectable, Writing Checklist, Editing Checklist, Student Book, Make Clean Copy
<b>Lesson 27</b> Opinion Sentences	<b>Introduce the Model</b> (T137) Projectable	<b>Trait: Conventions</b> (T147) Connect to Literature Projectable Reader's Notebook	<b>Prewrite</b> (T159) Projectable Reader's Notebook	<b>Draft</b> (T169) Connect to Literature Projectable Reader's Notebook	<b>Revise and Edit</b> (T176) Analyze the Model Projectable, Writing Checklist, Editing Checklist, Student Book, Make Clean Copy
<b>Lesson 28</b> Opinion Sentences	<b>Introduce the Model</b> (T235) Projectable	<b>Trait: Elaboration</b> (T245) Connect to Literature, Projectable, Reader's Notebook	<b>Prewrite</b> (T257) Projectable, Reader's Notebook	<b>Draft</b> (T267) Connect to Literature, Projectable, Reader's Notebook	<b>Revise and Edit</b> (T274) Analyze the Model Projectable, Writing Checklist, Editing Checklist, Student Book, Make Clean Copy
<b>Lesson 29</b> Opinion Paragraph	<b>Introduce the Model</b> (T337) Projectable	<b>Trait: Evidence</b> (T347) Connect to Literature, Projectable, Reader's Notebook	<b>Prewrite</b> (T359) Connect to Literature, Reader's Notebook	<b>Prewrite</b> (T369) Projectable, Reader's Notebook	<b>Revise and Edit</b> (T376) Analyze the Model Projectable, Writing Checklist, Student Book
<b>Lesson 30</b> Opinion Paragraph	<b>Introduce the Model</b> (T437)	<b>Trait: Organization</b> (T447) Connect to Literature, Projectable, Reader's Notebook	<b>Draft</b> (T459) Connect to Literature, Projectable, Reader's Notebook	<b>Drafting and Revising</b> (T469) Connect to Literature, Reader's Notebook	<b>Revise and Edit</b> (T476) Analyze the Model Projectable, Writing Checklist, Editing Checklist, Student Book

Connect with us:



\*Additional Writing Support provided Daily in the Common Core Writing Handbook (CCWH).

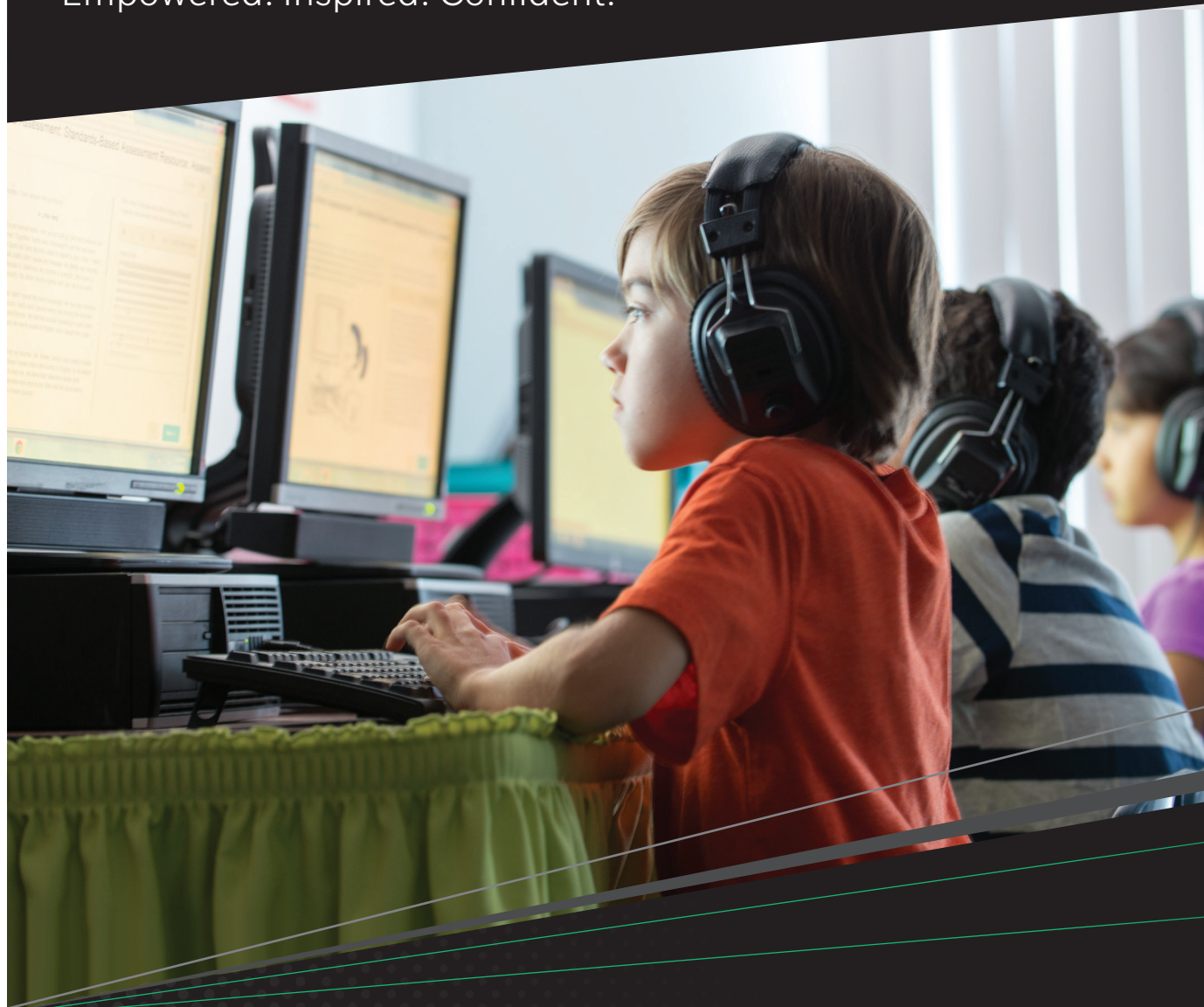
Houghton Mifflin Harcourt™ is a trademark of Houghton Mifflin Harcourt. © Houghton Mifflin Harcourt. All rights reserved. Printed in the U.S.A. 10/15 MS157721b

hmhco.com • 800.225.5425

# JOURNEYS

**Every Reader**

Empowered. Inspired. Confident.



**WRITING**  
**SCOPE AND SEQUENCE**

**1**

**UNIT 1: NARRATIVE WRITING**

	Day 1	Day 2	Day 3	Day 4	Day 5
<b>Lesson 1</b> <i>Labels</i>	<b>Introduce the Model</b> (T33) <i>Projectable, myWriteSmart*, CCWH*</i>	<b>Trait: Elaboration</b> (T43) <i>Connect to Literature, Projectable, Reader's Notebook</i>	<b>Prewrite</b> (T55) <i>Projectable, Reader's Notebook</i>	<b>Draft</b> (T65) <i>Connect to Literature, Projectable, Reader's Notebook</i>	<b>Revise and Edit</b> (T72) <i>Analyze the Model Projectable, Writing Checklist, Editing Checklist, Student Book, Make Clean Copy</i>
<b>Lesson 2</b> <i>Captions</i>	<b>Introduce the Model</b> (T129) <i>Projectable</i>	<b>Trait: Elaboration</b> (T139) <i>Connect to Literature, Projectable, Reader's Notebook</i>	<b>Prewrite</b> (T151) <i>Projectable, Reader's Notebook</i>	<b>Draft</b> (T161) <i>Connect to Literature, Projectable, Reader's Notebook</i>	<b>Revise and Edit</b> (T168) <i>Analyze the Model Projectable, Writing Checklist, Editing Checklist, Student Book, Make Clean Copy</i>
<b>Lesson 3</b> <i>Sentences</i>	<b>Introduce the Model</b> (T225) <i>Projectable</i>	<b>Trait: Purpose</b> (T235) <i>Connect to Literature, Projectable, Reader's Notebook</i>	<b>Prewrite</b> (T247) <i>Projectable, Reader's Notebook</i>	<b>Draft</b> (T257) <i>Connect to Literature, Projectable, Reader's Notebook</i>	<b>Revise and Edit</b> (T264) <i>Analyze the Model Projectable, Writing Checklist, Editing Checklist, Student Book, Make Clean Copy</i>
<b>Lesson 4</b> <i>Class Story</i>	<b>Introduce the Model</b> (T321) <i>Projectable</i>	<b>Trait: Elaboration</b> (T331) <i>Connect to Literature, Projectable, Reader's Notebook</i>	<b>Prewrite</b> (T343) <i>Reader's Notebook</i>	<b>Draft</b> (T353) <i>Connect to Literature, Projectable, Reader's Notebook</i>	<b>Revise and Edit</b> (T360) <i>Analyze the Model Projectable, Writing Checklist, Editing Checklist, Student Book</i>
<b>Lesson 5</b> <i>Class Story</i>	<b>Introduce the Model</b> (T417) <i>Projectable</i>	<b>Trait: Elaboration</b> (T427) <i>Connect to Literature, Projectable, Reader's Notebook</i>	<b>Prewrite</b> (T439) <i>Projectable, Reader's Notebook</i>	<b>Draft</b> (T449) <i>Projectable, Reader's Notebook</i>	<b>Revise and Edit</b> (T456) <i>Analyze the Model Projectable, Editing Checklist, Student Book</i>

**UNIT 2: INFORMATIVE WRITING**

	Day 1	Day 2	Day 3	Day 4	Day 5
<b>Lesson 6</b> <i>Sentences that Describe</i>	<b>Introduce the Model</b> (T35) <i>Projectable, myWriteSmart*, CCWH*</i>	<b>Trait: Elaboration</b> (T45) <i>Connect to Literature, Projectable, Reader's Notebook</i>	<b>Prewrite</b> (T57) <i>Projectable, Reader's Notebook</i>	<b>Draft</b> (T67) <i>Connect to Literature, Projectable, Reader's Notebook</i>	<b>Revise and Edit</b> (T74) <i>Analyze the Model Projectable, Writing Checklist, Editing Checklist, Student Book, Make Clean Copy</i>
<b>Lesson 7</b> <i>Poetry</i>	<b>Introduce the Model</b> (T133) <i>Projectable,</i>	<b>Trait: Elaboration</b> (T143) <i>Connect to Literature, Projectable, Reader's Notebook</i>	<b>Prewrite</b> (T155) <i>Projectable, Reader's Notebook</i>	<b>Draft</b> (T165) <i>Connect to Literature, Projectable, Reader's Notebook</i>	<b>Revise and Edit</b> (T172) <i>Analyze the Model Projectable, Writing Checklist, Editing Checklist, Student Book, Make Clean Copy</i>
<b>Lesson 8</b> <i>Thank-You Note</i>	<b>Introduce the Model</b> (T231) <i>Projectable</i>	<b>Trait: Purpose</b> (T241) <i>Connect to Literature, Projectable, Reader's Notebook</i>	<b>Prewrite</b> (T253) <i>Projectable, Reader's Notebook</i>	<b>Draft</b> (T263) <i>Connect to Literature, Projectable, Reader's Notebook</i>	<b>Revise and Edit</b> (T270) <i>Analyze the Model Projectable, Writing Checklist, Editing Checklist, Student Book, Make Clean Copy</i>
<b>Lesson 9</b> <i>Description</i>	<b>Introduce the Model</b> (T329) <i>Projectable</i>	<b>Trait: Evidence</b> (T339) <i>Connect to Literature, Projectable, Reader's Notebook</i>	<b>Prewrite</b> (T351) <i>Reader's Notebook</i>	<b>Prewrite</b> (T361) <i>Projectable, Reader's Notebook</i>	<b>Revise and Edit</b> (T368) <i>Analyze the Model Prewriting Checklist, Writing Checklist, Student Book</i>
<b>Lesson 10</b> <i>Description</i>	<b>Introduce the Model</b> (T427) <i>Projectable</i>	<b>Trait: Organization</b> (T437) <i>Connect to Literature, Projectable, Reader's Notebook</i>	<b>Draft</b> (T449) <i>Projectable, Connect to Literature, Reader's Notebook</i>	<b>Drafting and Revising</b> (T459) <i>Connect to Literature, Reader's Notebook</i>	<b>Revise and Edit</b> (T466) <i>Analyze the Model Projectable, Writing Checklist, Editing Checklist, Student Book</i>

## UNIT 3: INFORMATIVE WRITING

	Day 1	Day 2	Day 3	Day 4	Day 5
<b>Lesson 11</b> <i>Sentences that Inform</i>	<b>Introduce the Model</b> (T35) Projectable, myWriteSmart*, CCWH*	<b>Trait: Evidence</b> (T45) Connect to Literature, Projectable, Reader's Notebook	<b>Prewrite</b> (T57) Projectable, Reader's Notebook	<b>Draft</b> (T67) Connect to Literature, Projectable, Reader's Notebook	<b>Revise and Edit</b> (T74) Analyze the Model Projectable, Writing Checklist, Editing Checklist, Student Book, Make Clean Copy
<b>Lesson 12</b> <i>Instructions</i>	<b>Introduce the Model</b> (T135) Projectable	<b>Trait: Organization</b> (T145) Connect to Literature, Projectable, Reader's Notebook	<b>Prewrite</b> (T157) Projectable, Reader's Notebook	<b>Draft</b> (T167) Connect to Literature, Projectable, Reader's Notebook	<b>Revise and Edit</b> (T174) Analyze the Model Projectable, Writing Checklist, Editing Checklist, Student Book, Make Clean Copy
<b>Lesson 13</b> <i>Sentences that Inform</i>	<b>Introduce the Model</b> (T235) Projectable	<b>Trait: Purpose</b> (T245) Connect to Literature, Projectable, Reader's Notebook	<b>Prewrite</b> (T257) Projectable, Reader's Notebook	<b>Draft</b> (T271) Connect to Literature, Projectable, Reader's Notebook	<b>Revise and Edit</b> (T278) Analyze the Model Projectable, Writing Checklist, Student Book, Make Clean Copy
<b>Lesson 14</b> <i>Report</i>	<b>Introduce the Model</b> (T339) Projectable	<b>Trait: Evidence</b> (T349) Connect to Literature, Projectable, Reader's Notebook	<b>Prewrite</b> (T361) Reader's Notebook	<b>Prewrite</b> (T373) Projectable, Reader's Notebook	<b>Revise and Edit</b> (T380) Analyze the Model Projectable, Writing Checklist, Editing Checklist, Student Book
<b>Lesson 15</b> <i>Report</i>	<b>Introduce the Model</b> (T441) Projectable	<b>Trait: Elaboration</b> (T451) Connect to Literature, Projectable, Reader's Notebook	<b>Draft</b> (T463) Connect to Lit- erature, Projectable, Reader's Notebook	<b>Drafting and Revising</b> (T473) Connect to Literature, Reader's Notebook	<b>Revise and Edit</b> (T480) Analyze the Model Projectable, Writing Checklist, Editing Checklist, Student Book

## UNIT 4: NARRATIVE WRITING

	Day 1	Day 2	Day 3	Day 4	Day 5
<b>Lesson 16</b> <i>Personal Narrative Sentences</i>	<b>Introduce the Model</b> (T39) Projectable, myWriteSmart*, CCWH*	<b>Trait: Purpose</b> (T49) Connect to Literature, Projectable, Reader's Notebook	<b>Prewrite</b> (T61) Projectable, Reader's Notebook	<b>Draft</b> (T71) Connect to Literature, Projectable, Reader's Notebook	<b>Revise and Edit</b> (T78) Analyze the Model Projectable, Writing Checklist, Editing Checklist, Student Book, Make Clean Copy
<b>Lesson 17</b> <i>Sentences about Yourself</i>	<b>Introduce the Model</b> (T141) Projectable	<b>Trait: Development</b> (T151) Connect to Literature, Projectable, Reader's Notebook	<b>Prewrite</b> (T163) Projectable, Reader's Notebook	<b>Draft</b> (T173) Connect to Literature, Projectable, Reader's Notebook	<b>Revise and Edit</b> (T80) Analyze the Model Projectable, Writing Checklist, Editing Checklist, Student Book, Make Clean Copy
<b>Lesson 18</b> <i>Friendly Letter</i>	<b>Introduce the Model</b> (T243) Projectable	<b>Trait: Conventions</b> (T253) Connect to Literature, Projectable, Reader's Notebook	<b>Prewrite</b> (T265) Projectable, Reader's Notebook	<b>Draft</b> (T275) Projectable, Reader's Notebook	<b>Revise and Edit</b> (T282) Analyze the Model Projectable, Writing Checklist, Editing Checklist, Student Book, Make Clean Copy
<b>Lesson 19</b> <i>Personal Narrative</i>	<b>Introduce the Model</b> (T341) Projectable	<b>Trait: Organization</b> (T351) Connect to Literature, Projectable, Reader's Notebook	<b>Prewrite</b> (T363) Reader's Notebook	<b>Prewrite</b> (T373) Projectable, Reader's Notebook	<b>Revise and Edit</b> (T380) Analyze the Model Projectable, Writing Checklist, Editing Checklist, Student Book
<b>Lesson 20</b> <i>Personal Narrative</i>	<b>Introduce the Model</b> (T441) Projectable	<b>Trait: Development</b> (T451) Connect to Literature, Projectable, Reader's Notebook	<b>Draft</b> (T463) Connect to Literature, Reader's Notebook	<b>Drafting and Revising</b> (T473) Reader's Notebook	<b>Revise and Edit</b> (T480) Analyze the Model Projectable, Writing Checklist, Editing Checklist, Student Book