



South Zone

Elementary School Selection Booklet
for School Year 2019-20



KINDERGARTEN APPLICATION DEADLINE: MARCH 1, 2019

If your child turns 5 on or before December 1, 2019, it's time to register for Kindergarten classes that start in September, 2019.

If your child currently has a student ID number, you can complete the registration process at the School Choice Expo, your child's current preschool program, or the Office of Student Equity and Placement.

If your child is new to the RCSD they will not have a Student ID Number. You must come to the Office of Student Equity and Placement in person to register your child before participating in the lottery. Please see page 4 for more information.

This booklet explains the selection process and provides information on the District's elementary schools. For more detailed information, visit our website at www.rcsdk12.org or:

Speak to a School Selection Specialist
Office of Student Equity and Placement
131 West Broad Street
Monday through Friday
8:00 am to 4:30 pm
585-262-8241

Attend the RCSD School Expo
Saturday, January 12, 2019
9:00 am - 2:00 pm
Riverside Convention Center
123 E. Main Street, 14604

Learn about school performance at: data.nysed.gov

Type in the name of any school you are interested in for complete report card information.

To participate in the lottery for a chance to obtain your school of choice, you must apply by March 1, 2019.

TABLE OF CONTENTS

Steps for Registering Your Child in Kindergarten	4
South Zone Map	5
School Badges Key	6
South Zone Elementary Schools	
Clara Barton School No. 2	7
Nathaniel Rochester Community School No. 3	7
George Mather Forbes School No. 4	8
Anna Murray-Douglass Academy School No. 12	8
John Walton Spencer School No. 16	9
Dr. Charles T. Lunsford School No. 19	9
Francis Parker School No. 23	10
Adlai E. Stevenson School No. 29	10
Pinnacle School No. 35	11
Lincoln Park School No. 44	11
Citywide Elementary Schools	
Dual Language Program at School No. 12	12
Dr. Walter Cooper Academy School No. 10	12
The Children's School of Rochester No. 15	13
Montessori Academy School No. 53	13
Early Childhood School of Rochester No. 57	14
World of Inquiry School No. 58	14
Joseph C. Wilson Foundation Academy	15
Elementary Schools At A Glance	16

Choosing an Elementary School is Important



Kindergarten is an important milestone on your child's educational journey. Your child will make friends, develop social skills, and learn the basics he or she needs to succeed in later school years.

This booklet provides information on all Rochester schools with Kindergarten that your child is eligible to attend. All District schools provide services to students in both general and special education. For detailed information regarding special education services at each school, please contact the Department of Special Education at 262-8220.

It is important to note that the information in this booklet is subject to change based upon recommendations made as a result of the District's Path Forward Plan implementation.

Transportation is provided to students who live more than 1.5 miles from the school they attend.

Here's how it works

By participating in the lottery, families have a chance to enroll in an elementary school in their zone or one of our "citywide" schools. (See map on page 5. Space is limited, so you must apply before March 1, 2019 and participate in the lottery to be placed in one of the schools you select.

There are two ways your child can qualify for immediate placement in a school you want for Kindergarten:

1. You select your neighborhood school.
2. You have a sibling attending a school in your zone.

Even if your child qualifies for immediate Kindergarten placement as described above, you must apply by March 1, 2019, to be assured an immediate placement seat.

If your child regularly attends a District Pre-K program in your zone, the lottery is designed to give you preference at that school. The school must be in your zone and selected as your first choice.

The Kindergarten lottery process

A computer assigns a random number to each student who has submitted an application by March 1st (there is no preference given to applications submitted early). Students are placed in their first choice school if there are Kindergarten seats available in that school. If students do not receive their first choice, they will be placed in their next choice if there is space in that school. The process continues until all students have been placed. Every student is enrolled in the school as close as possible to his or her top choice.

To select a citywide school, choose it on the lottery application and that school becomes your top choice. In addition, you still need to rank 4 zone schools. The lottery system will try to place your child in your citywide choice first. If your child cannot be placed in the citywide school, the lottery system will place him or her in one of the other schools within your zone that you ranked on the application.

If you do not receive your first-choice school, you will be placed on a waiting list for that school and your child will be placed in one of the other ranked schools. If space becomes available prior to October 31, 2019, you will be contacted by The Office of Student Equity and Placement and given the option to move your child into that school.

Make an informed school choice!

- **Attend the RCSD School Expo on January 12, 2019.**
Explore school options for students in all grades, Pre-K to 12.
- **Visit schools you are considering.**
In-person visits are a great way to learn before you choose.

Steps for Participating in the Kindergarten Lottery:

- Step 1:** Learn about your school options.
- Step 2:** Prioritize your school selections (order your choice 1st, 2nd, 3rd...).
- Step 3:** Complete the application in this book by March 1, 2019.
You may also complete this step in person at the Office of Student Equity and Placement.
- Step 4:** All families will be notified of their child's school assignment in May of 2019.

Steps for Registering Your Child in Kindergarten:

For children without an RCSD Student ID Number

Documents Needed for Registration:

Child's Identification

- Birth certificate

Proof of Address *(one of the following)*

- Rent/lease contract—must be dated within a month
- Mortgage statement
- Current utility bill
- Pay stub with address

Proof of Guardianship

- Parent ID
- Guardianship papers if different than birth certificate

Child's Immunization Record *(if available)*

Updated immunizations are required to attend school.

If you don't have any of the documents listed above visit www.rcsdk12.org/enroll for a complete list of acceptable documentation.

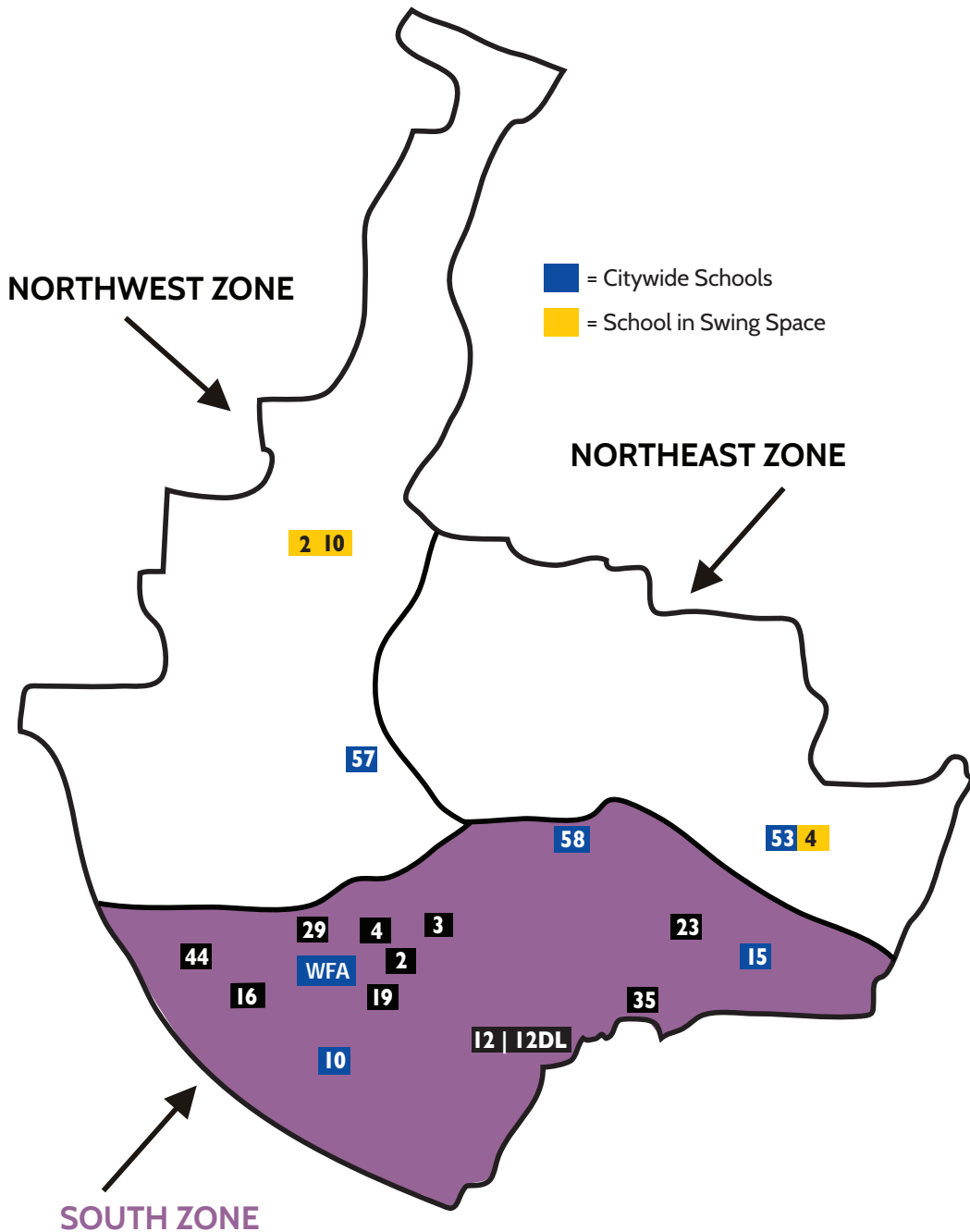
You live in the **SOUTH ZONE**. The following schools are available to your child:

Schools in the South Zone:

- Clara Barton School No. 2
- Nathaniel Rochester Community School No. 3
- George Mather Forbes School No. 4
- Anna Murray-Douglass Academy School No. 12
- John Walton Spencer School No. 16
- Dr. Charles T. Lunsford School No. 19
- Francis Parker School No. 23
- Adlai E. Stevenson School No. 29
- Pinnacle School No. 35
- Lincoln Park School No. 44

Citywide Schools:

- Dual Language Program at School No. 12
- Dr. Walter Cooper Academy School No. 10
- The Children's School of Rochester No. 15
- Montessori Academy School No. 53
- Early Childhood School of Rochester School No. 57
- World of Inquiry School No. 58
- Joseph C. Wilson Foundation Academy No. 68



School Badge Key



This school is actively engaged and on the journey to becoming a restorative school. This may include formal and informal practices to strengthen the school community in building relationships and repairing harm when it occurs.



This school is actively engaged and held as an exemplar model in restorative schools. This includes formal and informal practices to strengthen the school community in building relationships and repairing harm when it occurs, and engagement of students in restorative leadership.



Expeditionary Learning focuses on project-based learning, where students engage in interdisciplinary presentations and portfolios related to a group learning expedition.



The health center team includes a nurse practitioner, psychiatrist, primary mental health therapist, case managers, medical assistants, and other dedicated staff. Services include immunizations, physical exams, blood work, reproductive health, treatment of injuries or illnesses, prescriptions for minor conditions, and counseling for behavioral health issues.



Expanded learning time extends learning time beyond the traditional school day and school year, to provide broader, more enriching learning experiences for students.



Community schools act as a hub, offering a coordinated approach to connect and cultivate assets in the community and to link families to services, so that educators can focus on teaching and students can focus on learning.



Probability of getting this school as your first choice (based on the 2018 lottery) is 90% or above



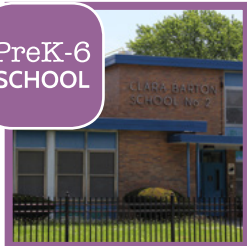
Probability of getting this school as your first choice (based on the 2018 lottery) is 75% or less



Probability of getting this school as your first choice (based on the 2018 lottery) is 25% or less

Clara Barton School No. 2

PreK-6
SCHOOL



Temporary Location
180 Ridgeway Street
Rochester, NY 14615

Permanent Location
190 Reynolds Street
Rochester, NY 14608

(585) 235-2820 • www.rcsdk12.org/2

Principal: Sharon Murrell Dilbert
Sharon.MurrellDilbert@rcsdk12.org
Parent Contact: Dwana Harrell
Dwana.Harrell@rcsdk12.org



FACTS

Uniforms Required: **Yes**
Foreign Languages: **No**
English Language Learners: **Yes**
Honors/Enrichment Classes: **No**
Early Literacy Program: **Yes, Reading Specialist onsite to provide support in grades K-6**
Chorus: **Yes**
Band/Orchestra: **Yes**
Instrumental Music Lessons: **Yes**
Sports: **Yes, Basketball**
Step Teams: **Yes**
Extended/Expanded Day: **No**
Saturday School: **No**

On-Site After-School Care: **Yes, Quad A After-School Program**
Summer Programs: **No**
Business/College/Faith Partnerships: **Kiwanis Club, Carlson Comedy Club, Mountain Rise Church, Harvest Bible Church, Abundant Life Faith Center, Judge Ninfo, Quad A, Monroe Community College, Genesee Community College**

SCHOOL FEATURES

- Strong academic program that focuses on providing students with an education that prepares them to be successful in the 21st century. School No. 2 is committed to the implementation of the Common Core Learning Standards.
- Clara Barton School No. 2 is a Restorative Practices School which means kindness is practiced daily. The school strives to be proactive and not reactive, focused on the social emotional well-being of students, incorporating strategies from TCIS and Restorative Practices into daily instruction in order to build stronger relationships with students.
- School No. 2 shows pride in our community, which includes a strong parent group that meets regularly and community partnerships that provide students and families with support beyond the school day.

Nathaniel Rochester Community School No. 3

K-8
SCHOOL



85 Adams Street
Rochester, NY 14608
(585) 454-3525 • www.rcsdk12.org/3

Principal: Pamela Rutland
Pamela.Rutland@rcsdk12.org
Parent Contact: Evana Harvey
Evana.Harvey@rcsdk12.org



FACTS

Uniforms Required: **Yes**
Foreign Languages: **Yes**
English Language Learners: **Yes**
Honors/Enrichment Classes: **Yes**
Early Literacy Program: **Yes**
Chorus: **Yes**
Band/Orchestra: **Yes**
Instrumental Music Lessons: **Yes**
Sports: **Yes**
Step Teams: **No**
Extended/Expanded Day: **Yes**
Saturday School: **No**
On-Site After-School Care: **Yes (City Rec)**
Summer Programs: **Yes, for selected rising 4th, 7th and 8th graders**
Business/College/Faith Partnerships: **University of Rochester, Mt. Olivet Baptist Church, Third Presbyterian Church, Corn Hill Neighborhood Association, Center for Youth, Roberts Wesleyan College, Nazareth College, St. John Fisher College, Generation 2, AmeriCorps, Genesee Country Museum, Rochester Museum and Science Center**

SCHOOL FEATURES

- NRCS is a community school that partners with several groups for tutoring support, health and wellness, and other youth services.
- Expanded Learning Time (ELT) School: Students receive additional time for academic, social-emotional, and recreational opportunities beyond those offered during a traditional school day.
- Students learn in hands-on ways that foster curiosity and problem solving.
- School-wide focus on STEM (Science, Technology, Engineering and Math):
 - Weekly STEM experiences with extracurricular activities, such as Engineering Academy, Invention Convention, and Lego League
 - STEM field trips
 - Opportunities to work with school partners at Xerox, the Rochester Museum and Science Center, and the University of Rochester's medical center
- Interscholastic school athletics for students in grades 7 and 8.

George Mather Forbes School No. 4

K-8
SCHOOL



Temporary Location
625 Scio Street
Rochester, NY 14605

Permanent Location
198 Dr. Samuel McCree Way
Rochester, NY 14611

(585) 235-7848 • www.rcsdk12.org/4

Principal: Karon Jackson
Karon.Jackson@rcsdk12.org
Parent Contact: Johnnita Bennett
Johnnita.Bennett@rcsdk12.org

90%
OR ABOVE

FACTS

Uniforms Required: **Yes**
Foreign Languages: **Spanish, Grade 8**
English Language Learners: **Yes**
Honors/Enrichment Classes: **No**
Early Literacy Program: **No**
Chorus: **Yes**
Band/Orchestra: **Yes**
Instrumental Music Lessons: **Yes**
Sports: **Yes (Modified sports for grades 7-8)**
Step Teams: **No**
Extended/Expanded Day: **Yes**
Saturday School: **No**

On-Site After-School Care: **No**

Summer Programs: **No**

Business/College/Faith Partnerships: **Advantage Federal Credit Union, Nazareth College, Kiwanis Club, Omega Psi Phi Fraternity, Bibleway Healing Assembly**

SCHOOL FEATURES

- 7th and 8th grade students learn in a separate school wing called the James Perkins Academy.
- New York State Alternate Assessments (NYSAA) Program for Kindergarten through grade 8 students.
- Technology includes Smart Boards in every classroom and the library; iPads used in grades K-2 and all Special Education ACE K-8 classes; and Chromebooks used in grades K-8 for centers and targeted intervention.
- Provides Response to Intervention (RTI) blocks in grades K-8, which provide students additional time for reading and math instruction.
- Project STRIDE, a Saturday program funded and operated by Omega Psi Phi Fraternity, provides an opportunity for students in grades 4-8 to learn self-development and self-empowerment.
- Partnership activities with area colleges, churches, and the larger community support students in academics, social skills, and exploring the larger community.

Anna Murray-Douglass Academy School No. 12

K-8
SCHOOL



999 South Avenue
Rochester, NY 14608
(585) 461-3280 • www.rcsdk12.org/12

Principal: Vicki Gouveia
Vicki.Gouveia@rcsdk12.org
Parent Contact: Susan Allen
Susan.Allen@rcsdk12.org

FACTS

Uniforms Required: **No**
Foreign Languages: **Spanish in a Dual Language Model Program**
English Language Learners: **Yes**
Honors/Enrichment Classes: **Yes**
Early Literacy Program: **Yes**
Chorus: **Yes**
Band/Orchestra: **Yes**
Instrumental Music Lessons: **Yes**
Sports: **Yes**
Step Teams: **No**
Extended/Expanded Day: **No**
Saturday School: **No**
On-Site After-School Care: **Yes**
Summer Programs: **No**
Business/College/Faith Partnerships: **Rochester Midland Corporation-Girls and Boys Groups, Greater Rochester Health Foundation, First Robotics Lego League, Center for Youth**

25%
OR LESS

SCHOOL FEATURES

- Early intervention and enrichment opportunities for all students. Gifted and talented Alternative Curriculum Education (ACE) program offered.
- Spanish/English Dual Language enrichment program (HOLA) is offered in grades K-6.
- Clear school-wide procedures are in place for a safe learning environment.
- Extensive music and arts focus.
- Strong parent support group and community volunteers who support school-wide initiatives.
- Intramural sports are offered.

John Walton Spencer School No. 16



321 Post Avenue
Rochester, NY 14619
(585) 235-1272 • www.rcsdk12.org/16

Principal: Carla Roberts
Carla.Roberts@rcsdk12.org
Parent Contact: Ernestine Brown
Ernestine.Brown@rcsdk12.org

FACTS

Uniforms Required: **No**
Foreign Languages: **No**
English Language Learners: **Yes**
Honors/Enrichment Classes: **No**
Early Literacy Program: **No**
Chorus: **Yes**
Band/Orchestra: **Yes**
Instrumental Music Lessons: **Yes**
Sports: **No**
Step Teams: **No**
Extended/Expanded Day: **No**
Saturday School: **No**
On-Site After-School Care: **Yes**
Summer Programs: **No**
Business/College/Faith Partnerships: **Ebenezer Baptist Church, St. Stephens Episcopal Church, Southwest Ecumenical Ministries (SWEM), New Life Fellowship Church, University of Rochester, SUNY Brockport, Center for Youth, Southwest Kiwanis, Rochester Presbyterian Home, Xerox Corporation, Victor-Farmington Rotary, 19th Ward Community Association, Quad A for Kids**



SCHOOL FEATURES

- Participates in Terrific Kids, a student recognition program that promotes character development, self-esteem, and perseverance. Students work with their classroom teachers to establish goals to improve behavior, peer relationships, attendance, or schoolwork, and are recognized for achieving their goals in a set period of time.
- Promotes a safe school environment and supports character building through the School-Wide Positive Behavioral Support (SWPBS) program.
- Annual spelling bee held at the University of Rochester.
- Afterschool program, Quad A for Kids, runs from October through May. All students in grades 1- 6 are eligible to apply.
- John Walton Spencer School No. 16 is a Pre-K site.
- KBA Basketball for students in grades 4-6.

Dr. Charles T. Lunsford School No. 19



465 Seward Street
Rochester, NY 14608
(585) 328-7454 • www.rcsdk12.org/19

Principal: Moniek Silas-Lee
Moniek.Silas-Lee@rcsdk12.org
Parent Contact: Alicia Bell
Alicia.Bell@rcsdk12.org

FACTS

Uniforms Required: **No**
Foreign Languages: **Spanish (Grade 8)**
English Language Learners: **Yes**
Honors/Enrichment Classes: **Yes**
Early Literacy Program: **No**
Chorus: **Yes**
Band/Orchestra: **Yes**
Instrumental Music Lessons: **Yes**
Sports: **Yes, motified 7 and 8**
Step Teams: **No**
Extended/Expanded Day: **No**
Saturday School: **No**
On-Site After-School Care: **No**
Summer Programs: **No**
Business/College/Faith Partnerships: **Greater Rochester Health Foundation/FLHSA, Southwest Rotary Club, Foodlink, Fidelis Care, Flint Street Recreation Center, Center for Youth (ATS/Strings for Success), Junior Achievement Community Place (Foster Grandparent Program), Primary Project Children's Institute, Edgewood Free Methodist Church, Church of Love, Leap**



(U of R), Gandhi House, Smile Mobile, Links 4 Kids, SUNY Geneseo

SCHOOL FEATURES

- Intramural modified athletics for 7th and 8th grades, Mediation Grade Level Support through Restorative Justice Practices, Student Council, Violin Orchestra, and much more.
- "Strings for Success;" a violin program for students in grades 3-8. Students travel to perform at various community organizations in Rochester, New York State, and throughout the United States.
- Parents are connected to the school community through the School-Based Planning Team, the PTO, volunteer opportunities, Greater Rochester Health Foundation, All Pro Dads, Mighty Moms, and much more.
- Dr. Charles T. Lunsford School 19 and SUNY Geneseo are working together in a partnership. Through this partnership students will have the benefit of engaging in the CCTM (Collaborative Co-Teaching Model), receiving small group instruction daily in core subjects. Literary and community building remain a focus.

Francis Parker School No. 23

PreK-6
SCHOOL



170 Barrington Street
Rochester, NY 14607
(585) 473-5099 • www.rcsdk12.org/23

Principal: John Gonzalez
John.Gonzalez@rcsdk12.org
Parent Contact: Patricia McKinney
Patricia.McKinney@rcsdk12.org

FACTS

Uniforms Required: **Yes**
Foreign Languages: **Yes (Spanish)**
English Language Learners: **Yes**
Honors/Enrichment Classes: **Yes**
Early Literacy Program: **Yes**
Chorus: **Yes**
Band/Orchestra: **Yes**
Instrumental Music Lessons: **Yes**
Sports: **No**
Step Teams: **Yes**
Extended/Expanded Day: **Yes**
Saturday School: **No**
On-Site After-School Care: **No**
Summer Programs: **Yes**
Business/College/Faith Partnerships: **University of Rochester, Memorial Art Gallery**



SCHOOL FEATURES

- Expanded Learning Time (ELT) School—students receive additional time to have elective opportunities, i.e. Drama, Minecraft Edu, and Step Dance. Students are also provided opportunities for academic intervention and acceleration.
- A theater production occurs each school year.
- Ranked Best School in Monroe County for 2017 using the NYS School Quality Index.
- Strong parent presence and voice via the PTA.

Adlai E. Stevenson School No. 29

PreK-6
SCHOOL



88 Kirkland Road
Rochester, NY 14611
(585) 328-8228 • www.rcsdk12.org/29

Principal: Joseph Baldino
Joseph.Baldino@rcsdk12.org
Parent Contact: Tiffany Bumphis Tiffany.
Bumphis@rcsdk12.org

FACTS

Uniforms Required: **No**
Foreign Languages: **No**
English Language Learners: **Yes**
Honors/Enrichment Classes: **Yes**
Early Literacy Program: **No**
Chorus: **Yes**
Band/Orchestra: **Yes**
Instrumental Music Lessons: **Yes**
Sports: **No**
Step Teams: **No**
Extended/Expanded Day: **Yes**
Saturday School: **No**
On-Site After-School Care: **No**
Summer Programs: **No**
Business/College/Faith Partnerships: **Memorial Art Gallery, CURCS, Lawyers for Learning, Foodlink, Arnett Library, Boy Scouts, Girl Scouts, Boys & Girls Club of Rochester, Rochester Gardening Club, AmeriCorps**



SCHOOL FEATURES

- Expanded Learning Time (ELT) School: Students receive additional time for academic, social-emotional, and recreational opportunities beyond those offered during a traditional school day.
- Committed to academic excellence by meeting students' individual needs and striving to prepare students to be global contributors and critical thinkers.
- Partnership with the Boys and Girls Club to offer exciting enrichment activities to all students.
- Boy Scout and Girl Scout opportunities.
- Memorial Art Gallery programs for grades 2-5.
- The GEM program (Growth and Education of Students with Multiple Disabilities) highlights belief that every child is a work of art. Students of all abilities and ages work together to reach their fullest potential.
- Community relationships offer tutoring, mentoring, school supplies, community resources, field trips, and friendships that last a lifetime.
- Literacy initiatives: 29 Book Campaign, Tier 3 intervention, Compass Learning, and Lexia Reading.
- Restorative Practices and Positive Behavior Intervention Strategies (PBIS) are used to address student conflict and resolve matters peacefully.

Pinnacle School No. 35

K-6
SCHOOL



194 Field Street
Rochester, NY 14620
(585) 271-4583 • www.rcsdk12.org/35

Principal: Brenda Torres-Santana
Brenda.Torres-Santana@rcsdk12.org
Parent Contact: Arlene Surita
Arlene.Surita@rcsdk12.org

FACTS

Uniforms Required: **Yes**
Foreign Languages: **No**
English Language Learners: **Yes**
Honors/Enrichment Classes: **No**
Early Literacy Program: **No**
Chorus: **Yes**
Band/Orchestra: **Yes**
Instrumental Music Lessons: **Yes**
Sports: **No**
Step Teams: **No**
Extended/Expanded Day: **No**
Saturday School: **No**
On-Site After-School Care: **Yes (REC Program)**
Summer Programs: **No**
Business/College/Faith Partnerships: **Third Presbyterian Church, Ladies Attaining Self-Sufficiency, Nazareth College, St. John Fisher College, Principal's Lending Closet**



SCHOOL FEATURES

- The 25 Book Campaign and software applications, Compass, Lexia, Dream Box, Reflex Math, Flocabulary, and Accelerated Reader are used to promote literacy.
- Character Education Programs include Peer Mediation and Ladies Attaining Self-Sufficiency (LASS) Program to address the areas of emotional intelligence, conflict resolution, and positive thinking. The school implements the School-Wide Positive Behavioral Supports (SWPBS) and Restorative Practices program and participates in the Primary Project, which proactively supports students' emotional and social needs in the primary grades.
- Transitional Bilingual Program that develops students' home language of Spanish while students learn English.
- English as a new language (ENL) services support students' academic needs.
- Technology tools (Smart board, IPad, Chromebooks and Document reader) used to support instruction in all grade levels.
- Classroom Morning Meeting and School-Wide Morning Meeting held twice a month to support and foster a community of caring and respect for learners.
- RCSD/REC After-School Collaborative Program: Provides 145 students with enrichment and a meal.
- Reading and Intervention teachers to provide additional, small group reading and math support.

Lincoln Park School No. 44

K-6
SCHOOL



820 Chili Avenue
Rochester, NY 14611
(585) 328-5272 • www.rcsdk12.org/44

Principal: Rodney Moore
Rodney.Moore@rcsdk12.org
Parent Contact: Ilka Fernandez
Ilka.Fernandez@rcsdk12.org

FACTS

Uniforms Required: **No**
Foreign Languages: **No**
English Language Learners: **Yes**
Honors/Enrichment Classes: **Yes**
Early Literacy Program: **Yes**
Chorus: **Yes**
Band/Orchestra: **Yes**
Instrumental Music Lessons: **Yes**
Sports: **No**
Step Teams: **No**
Extended/Expanded Day: **Yes**
Saturday School: **No**
On-Site After-School Care: **No**
Summer Programs: **No**
Business/College/Faith Partnerships: **Monroe Community College, SUNY Brockport, St. Mary's Church, Baden Street Settlement, 19th Ward Association, Genesee Mental Health**



SCHOOL FEATURES

- Expanded Learning Time (ELT) School: Students receive additional time for academic, social-emotional, and recreational opportunities beyond those offered during a traditional school day.
- Emphasis on early childhood, with a three-year-old classroom, two Pre-K classes that focus on early language development.
- Students are engaged in a well-balanced curriculum based on the Next Generation Learning Standards with a strong focus on ELA and mathematics.
- High performing committees, such as an active and committed Comprehensive Education Team (CET) and a high-functioning School-Based Planning Team (SBPT).
- Our 25 Book Campaign has a year-end celebration, which includes both student and adult participants.
- The PTO works closely with the staff to plan school events and celebrations, such as Movie Night, Bingo, Breakfast with Santa, and many more.
- PBIS initiative is a proactive program that addresses social-emotional behaviors and student discipline.
- Character Education with a monthly focus on six different ethical values, including Citizenship, Trustworthiness, Caring, Respect, Responsibility, and Fairness.
- Students and staff begin each day with a morning meeting that is made up of four sequential components: greeting, sharing, group problem-solving, and morning message, which foster a community of caring and respectful learners.

Dual Language Program at School No. 12

K-8
SCHOOL



999 South Avenue
Rochester, NY 14608
(585) 461-3280 • www.rcsdk12.org/12

Principal: Vicki Gouveia
Vicki.Gouveia@rcsdk12.org
Parent Contact: Susan Allen
Susan.Allen@rcsdk12.org

FACTS

The Dual Language Program:

- Helps students develop literacy in two languages (English and Spanish) from the time they first enter formal education.
- Classes are comprised of 50% Spanish-speaking students and 50% English-speaking students.
- Provides instruction in English half the time and in Spanish half the time.
- Allows students to join the program at kindergarten and progress through the elementary grades (K-6) with the same classmates.
- Staffed by certified bilingual teachers.
- Uses proven teaching methods for second-language acquisition.
- Incorporates instructional strategies (cooperative learning, direct instruction, whole language, and individualized instruction) that help students develop fluency in both Spanish and English.

Dr. Walter Cooper Academy School No. 10

K-6
SCHOOL



Temporary Location
180 Ridgeway Avenue,
Rochester, NY 14615

Permanent Location
353 Congress Avenue
Rochester, NY 14619

(585) 324-2010 • www.rcsdk12.org/10

Principal: Camaron Clyburn
Camaron.Clyburn@rcsdk12.org
Parent Contact: Freedia Ogden
Freedia.Ogden@rcsdk12.org

FACTS

Uniforms Required: **Yes**
Foreign Languages: **No**
English Language Learners: **Yes**
Honors/Enrichment Classes: **Yes**
Early Literacy Program: **Yes**
Chorus: **Yes**
Band/Orchestra: **Yes**
Instrumental Music Lessons: **Yes**
Sports: **Yes**
Step Teams: **No - Has a Dance Team**
Extended/Expanded Day: **No**
Saturday School: **No**
On-Site After-School Care: **No**
Summer Programs: **No**



Business/College/Faith Partnerships: **EL Education, Greater Rochester Health Foundation, YMCA, Rochester Engineering Society, University of Rochester Medical Students, International Institute for Restorative Practices (IIRP)**

SCHOOL FEATURES

- Dr. Walter Cooper Academy (DWCA) follows the EL Education model. The school engages its diverse student body in joyful, rigorous, and fascinating learning experiences, instilling both perseverance and a sense of responsibility in students. It is reinforced in the motto, "We never give up, never give up, never give up!"
- The EL Learning model promotes rigorous and engaging curriculum through long-term, interdisciplinary studies and active, inquiry-based learning along with the development of positive school culture and students' character.
- Daily morning meetings are held in every classroom along with weekly school-wide community meetings to foster a community of caring and respectful learners.
- Incorporates the use of technology in all grade level instruction with use of Smart Boards, iPads, ELMOs, cameras, Chromebooks and a double computer lab.

The Children's School of Rochester No. 15

K-6
SCHOOL



85 Hillside Avenue
Rochester, NY 14610
(585) 262-8830 • www.rcsdk12.org/15

Principal: Jay Piper
Jay.Piper@rcsdk12.org
Parent Contact: Ashwin Basnet
Ashwin.Basnet@rcsdk12.org

FACTS

Uniforms Required: **No**
Foreign Languages: **No**
English Language Learners: **Yes**
Honors/Enrichment Classes: **No**
Early Literacy Program: **Yes**
Chorus: **Yes**
Band/Orchestra: **Yes**
Instrumental Music Lessons: **Yes**
Sports: **No**
Step Teams: **No**
Extended/Expanded Day: **No**
Saturday School: **No**
On-Site After-School Care: **No**
Summer Programs: **Yes**
Business/College/Faith Partnerships: **First Unitarian Church, University of Rochester School of Nursing, University of Rochester Refugee Student Alliance**

25%
OR LESS

SCHOOL FEATURES

- Extracurricular activities provide opportunities for families and community partners to work collaboratively in shared decision making. This includes the PTO and school work groups that provide school governance.
- Families are invited to participate in "Morning Briefings," which are assemblies and/or celebrations that provide an opportunity for students to share their accomplishments and establish a firm literacy foundation.
- English as a New Language (ENL) services support students' academic needs. Half of the students in this school are from other countries and bring a variety of cultural traditions and life experiences which enrich instruction for all students. These are celebrated and shared at frequent school events for students, families, and community partners.

CITYWIDE SCHOOL

Montessori Academy School No. 53

K-6
SCHOOL



625 Scio Street
Rochester, NY 14605
(585) 325-0935 • www.rcsdk12.org/53

Principal: Dr. Kimberly Harris-Pappin
Kimberly.Harris-Pappin@rcsdk12.org
Parent Contact: Sherphine Dailey
Sherphine.Dailey@rcsdk12.org

FACTS

Uniforms Required: **Yes**
Foreign Languages: **No**
English Language Learners: **Yes**
Honors/Enrichment Classes: **Yes**
Early Literacy Program: **Yes**
Chorus: **Yes**
Band/Orchestra: **Yes**
Instrumental Music Lessons: **Yes**
Sports: **No**
Step Teams: **No**
Extended/Expanded Day: **No**
Saturday School: **No**
On-Site After-School Care: **No**
Summer Programs: **No**
Business/College/Faith Partnerships: **The Community Place (after-school program included), Rochester Roots, Inc. (day and after-school program), Friends of Dr. Freddie Thomas, Inc.**

SBHC
SCHOOL BASED
HEALTH CENTER

25%
OR LESS

SCHOOL FEATURES

- Incorporates the motto: "We Believe in the Child."
- Multi-age classrooms at three levels: Primary (ages 3, 4, 5); Lower Elementary (grades 1, 2); Middle Elementary (grades 3, 4); and Upper Elementary (grades 5, 6).
- Integrates the philosophical perspective of Dr. Maria Montessori into the Prepared Learning Environment through the teaching of Grace and Courtesy, Peace, Practical Life Skills, Sensorial, and uses Montessori materials.
- Children engage in the Next Generation Learning Standards and NYS curriculum guided by the Montessori curriculum.
- Peer mentoring, role modeling, and long-term teacher-child relationships in multi-age classes.
- Students develop a global understanding of the world and become skilled at problem-solving by working collaboratively with peers.
- Considers child growth and development and children's interests in its student-centered, individualized instructional approach.
- Environment is designed to offer children opportunities to make positive choices and to enjoy academic success. Students are provided the materials, space, and time to build concentration, which promotes higher-level thinking skills.

Because the majority of PreK choose to stay for kindergarten, generally there are not many open seats in for kindergarten.

CITYWIDE SCHOOL

Early Childhood School of Rochester No. 57

PreK-2
SCHOOL



15 Costar Street
Rochester, NY 14608
(585) 277-0190 • www.rcsdk12.org/57

Principal: Eva Thomas
Eva.Thomas@rcsdk12.org
Parent Contact: Donita Cummings
Donita.Cummings@rcsdk12.org

FACTS

Uniforms Required: **Yes**
Foreign Languages: **No**
English Language Learners: **Yes**
Honors/Enrichment Classes: **No**
Early Literacy Program: **Yes**
Chorus: **Yes**
Band/Orchestra: **No**
Instrumental Music Lessons: **Yes**
Sports: **No**
Step Teams: **No**
Extended/Expanded Day: **No**
Saturday School: **No**
On-Site After-School Care: **No**
Summer Programs: **Yes, Partnering with YMCA**
Business/College/Faith Partnerships: **Monroe Community College, St. John Fisher College, Charles Settlement House, Healthy Kids Program, Spiritis Christi Church, The OCHO Project, The Community Place, Genetaska Club of Rochester, Nazareth College, Jewish Family Services: Pencils and Paper, Rochester Teacher Center, University of Rochester, Rochester Chamber of Commerce, Brockport College, Geneseo College.**



SCHOOL FEATURES

- Only K-2 school in the Rochester City School District.
- Follows Next Generation Learning Standards, including a full block of ELA and math, and has a Speech and Language program.
- Raising a Reader Program and Foster Grandparent Program.
- Strong partnerships with local colleges for student teaching and internships.
- Active Parent Teacher Community Association (PTCA) group that sustains parents as partners, as well as All Pro Dads Program.
- Multiple clubs for student activities: Cub Scouts, Girl Scouts Club, Art Club, Music Club.
- Hosts an annual Black History family/community celebration dinner.
- Scholastic book fair for early childhood students.
- Promotes a safe school environment and supports character building through School-Wide Positive Behavior Support Program (SWPBS).
- Students receive daily Response to Intervention (RTI) services delivered by both the classroom teachers and RTI specialists.
- Universal Pre-K program on campus.
- National Primary Project Program.

World of Inquiry School No. 58

K-12
SCHOOL



200 University Avenue
Rochester, NY 14605
(585) 325-6170 • www.rcsdk12.org/58

Principal: Sheelarani Webster
Sheelarani.Webster@rcsdk12.org
Parent Contact: Shelly Boyd
Shelly.Boyd@rcsdk12.org

FACTS

Uniforms Required: **Yes**
Foreign Languages: **No**
English Language Learners: **Yes**
Honors/Enrichment Classes: **Yes**
Early Literacy Program: **Yes**
Chorus: **Yes**
Band/Orchestra: **Yes**
Instrumental Music Lessons: **Yes**
Sports: **Yes, starting in grade 7**
Step Teams: **Yes**
Extended/Expanded Day: **No**
Saturday School: **Yes, starting in grade 7**
On-Site After-School Care: **No**
Summer Programs: **No**
Business/College/Faith Partnerships: **University of Rochester, Nazareth College, St. John Fisher College, Monroe Community College, Key Bank, Expeditionary Learning, Junior Achievement, Hart's Grocery, Buddy Readers through a local church**



SCHOOL FEATURES

- A K-12 Expeditionary Learning (EL) School and recipient of the prestigious Blue Ribbon Award (2010).
- Staff follow EL best practices that promote rigorous and engaging curriculum; active, inquiry-based teaching; and a school culture that demands and teaches compassion and good citizenship.
- Students engage in a rigorous and well-rounded curriculum that integrates math, ELA, science, social studies, arts, music, and fitness within a learning expedition.
- Students engage in two grade-level "learning expeditions," which are long-term intellectual investigations where learning is connected to real-world experiences through interdisciplinary projects that promote citizenship and character development.
- Students participate in two Outward-Bound excursions that challenge their mental and physical well-being.

Joseph C. Wilson Foundation Academy No. 68

K-8
SCHOOL



200 Genesee Street
Rochester, NY 14611
(585) 463-4100 • www.rcsdk12.org/wilsonfoundation

Principal: Dr. Deasure Matthew
Deasure.Matthew@rcsdk12.org
Parent Contact: Pamela Francis
Pamela.Francis@rcsdk12.org

FACTS

Uniforms Required: **Yes**
Foreign Languages: **Spanish, Kiswahili**
English Language Learners: **Yes**
Honors/Enrichment Classes: **Yes**
Early Literacy Program: **Yes**
Chorus: **Yes**
Band/Orchestra: **Yes**
Instrumental Music Lessons: **Yes**
Sports: **Yes**
Step Teams: **No**
Extended/Expanded Day: **No**
Saturday School: **No**
On-Site After-School Care: **Yes, through SWAN**
Summer Programs: **No**
Business/College/Faith Partnerships: **Southwest Area Neighborhood Association (SWAN), University of Rochester**

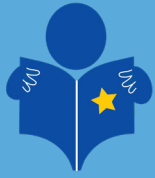


SCHOOL FEATURES

- The only International Baccalaureate (IB) Middle Years Program for grades 7-8 in the Rochester City School District, and an IB Candidate School for the Primary Years Program for grades K-6.
- Primary grades K-6 students are introduced to the IB instructional framework through the implementation of the ten IB learner profiles and six transdisciplinary themes.
- The IB Middle Years Program provides a framework of academic challenge that encourages students to become critical and reflective thinkers. The students understand and embrace the connections between traditional subjects and the real world.

Elementary Schools At a Glance

	Grade Levels	Uniforms	Business/College/Faith Partnerships	On-Site After-School Care	Choir/Chorus	Step Teams	Band/Orchestra	Instrumental Music Lessons	Sports	Honors/Enrichment	Foreign Languages for English Speakers	English Language Learners	Early Literacy Program	Saturday School	Extended/Expanded Day	Summer Programs	Pre-K Site
Clara Barton School No. 2	K-6	X	X		X	X	X	X	X			X	X				X
Nathaniel Rochester Community School No. 3	K-8	X	X	X	X		X	X	X	X	X	X	X		X	X	
George Mather Forbes School No. 4	K-8	X	X		X		X	X	X		X	X			X		
Anna Murray-Douglass Academy School No. 12	K-8		X	X	X		X	X	X	X	X	X	X				
John Walton Spencer School No. 16	K-6		X		X		X	X				X					X
Dr. Charles T. Lunsford School No. 19	K-8		X		X		X	X	X	X	X	X					X
Francis Parker School No. 23	K-6	X	X		X	X	X	X		X	X	X	X		X	X	X
Adlai E. Stevenson School No. 29	K-6		X		X		X	X		X		X			X		X
Pinnacle School No. 35	K-6	X	X	X	X		X	X				X					
Lincoln Park School No. 44	K-6		X		X		X	X		X		X	X		X		X
CITYWIDE SCHOOLS																	
Dr. Walter Cooper Academy School No. 10	K-6	X	X		X		X	X		X		X	X				X
The Children's School of Rochester No. 15	K-6		X		X		X	X				X	X			X	X
Montessori Academy School No. 53	K-6	X	X		X		X	X		X		X	X				X
Early Childhood School of Rochester No. 57	K-2	X	X		X			X				X	X				X
World of Inquiry School No. 58	K-12	X	X	X	X	X	X	X	X	X		X	X	X			
Joseph C. Wilson Foundation Academy No. 68	K-8	X	X	X	X		X	X	X	X	X	X	X				
DUAL LANGUAGE																	
Dual Language Program at School No. 12	K-6		X	X	X	X	X	X	X	X	X	X	X				X



Rochester City School District

**FIND YOUR
BEST FIT!**

Choose the best school for your child.



Rochester City School District

EXPO & FAIR

Grades Pre-K to 12

Saturday, January 12

9:00 am to 2:00 pm

Riverside Convention Center | 123 E. MAIN ST., 14604

Free Parking • Student Performances • Fun Activities



**Registration
On-site for PreK,
Kindergarten, 7th
and 9th grades**

**School and
Program
Showcase**

**Meet
District and
Department
Staff**

**Learn About
Offerings for
3 and 4
Year-Olds**

**Meet with
Pre-K Staff and
Community
Partners**



Rochester City School District
131 West Broad Street
Rochester, NY 14614

www.rcsdk12.org

Board of Education

Van Henri White, President
Willa Powell, Vice President
Cynthia Elliott
Melanie Funchess
Elizabeth Hallmark
Beatriz LeBron
Natalie Sheppard

Student Representative

Malik Jaff

Superintendent of Schools

Barbara Deane-Williams

*Produced by the Department of Communications
Information is accurate as of December 2018.*

NOTICE OF NON-DISCRIMINATION

The Rochester City School District does not discriminate on the basis of an individual's actual or perceived race, color, religion, creed, ethnicity, national origin, citizenship status, age, marital status, partnership status, disability, predisposing genetic characteristics, sexual orientation, gender (sex), military status, veteran status, domestic violence victim status or political affiliation, and additionally does not discriminate against students on the basis of weight, gender identity, gender expression, and religious practices or any other basis prohibited by New York State and/or federal non-discrimination laws in employment or its programs and activities. The District provides equal access to community and youth organizations. Inquiries regarding the District's non-discrimination policies should be directed to:

Chief, Human Resources, Civil Rights Compliance Officer
131 West Broad Street
Rochester, New York 14614
(585) 262-8689

Email: CivilRightsCompliance@rcsdk12.org