

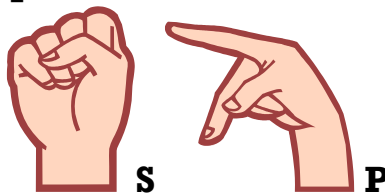
Dear Parents,

We continue to cycle through our sounds! This week we are targeting initial /sp/ also known as our “snake and popcorn sound”, both within the classroom and during speech therapy sessions.

The target sound cards for initial /sp/ include:

*** spin, spoon, spill, spot, and spider ***

Below is the signed speech cue for the initial /sp/ sound.



Please review these target sounds with your child at home using them in words, sentences, and during conversation. It is important that your child learn to correctly use these target sounds across all different contexts.

Attached to this letter you will find sentences practice sheets to work on the target sound and additional activities you can do at home.

Looking forward to a great year and thank you for your continued support!

**If you have any questions please feel free to call me at school.
#288-3654 Ext. 2010, 2020**

Sincerely,

Karen Guerand MS CCC/SLP

Lauren Moravec MS CCC/SLP

Danielle Pierce MS CCC/SLP

Letter 1