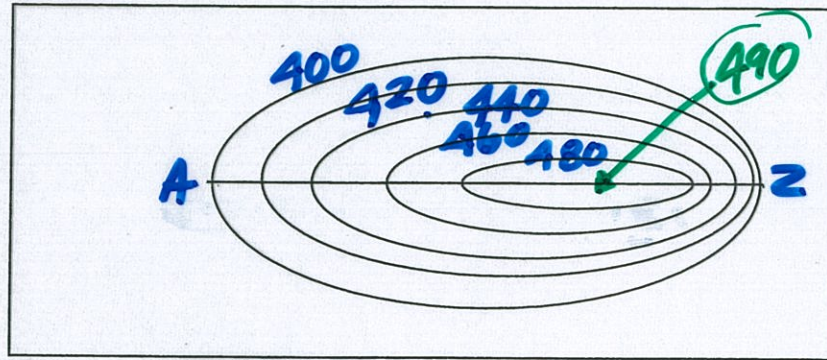


# VII. Profiles

A profile is what something looks like from the side.



1. Find the contour interval. (What you are counting by.) **20 ft.**
2. Label the elevation on each contour line. (On the top where you can see it.)
3. Bring the edge of a piece of paper to line **AZ**.
4. Put a mark on the paper where the contour lines cross the edge.
5. Label the elevations on the edge of the paper.
6. Label the elevations on the graph.
7. Bring the edge of the paper to the bottom of the graph.
8. Make a dot on the graph directly above each mark on the edge of the paper. The dot must be at the correct elevation.
9. connect the dots with curved lines. Curve the tops of hills and the bottoms of valleys. Only connect the dots that you drew.

