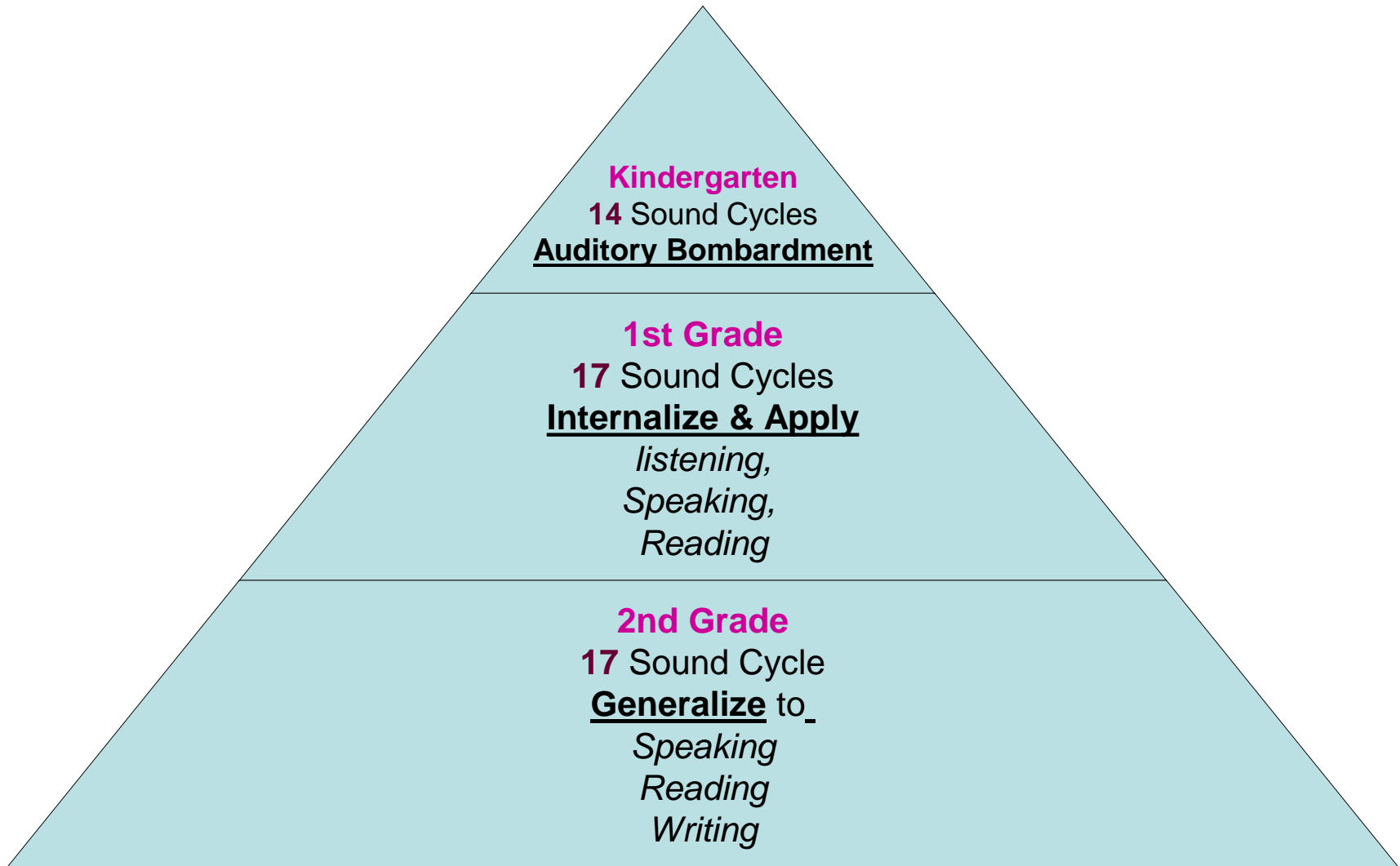


Speech Language Therapy
to Encourage
the Production of Sounds



Kindergarten

14 Sound Cycles

Auditory Bombardment

1st Grade

17 Sound Cycles

Internalize & Apply

listening,
Speaking,
Reading

2nd Grade

17 Sound Cycle

Generalize to

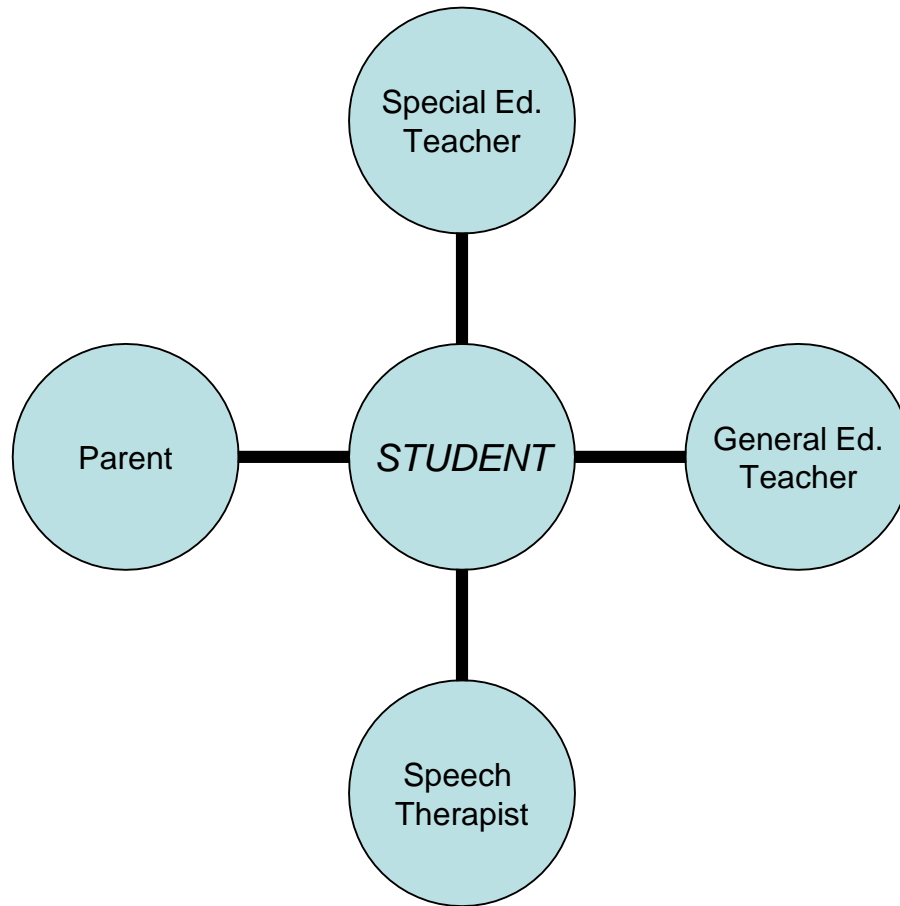
Speaking
Reading
Writing

What makes STEPS unique from traditional programs?

- Highly effective researched-based therapy.
- Consistent intensive support pairing remedial techniques and visual signed cues.
- Generalization of skills to improve oral language, reading and written language.

STEPS

Team Collaboration



STEPS

Eligibility...

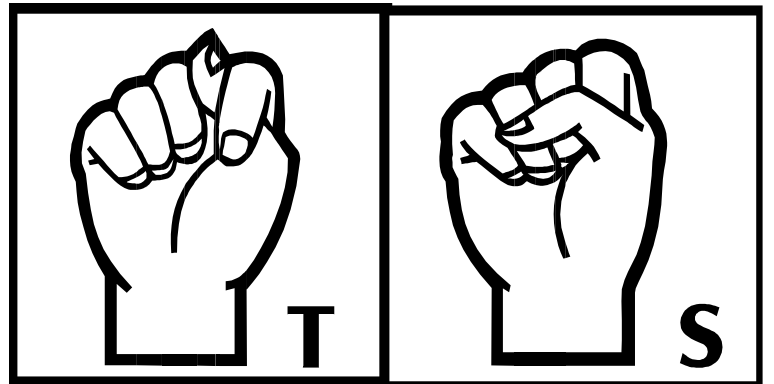
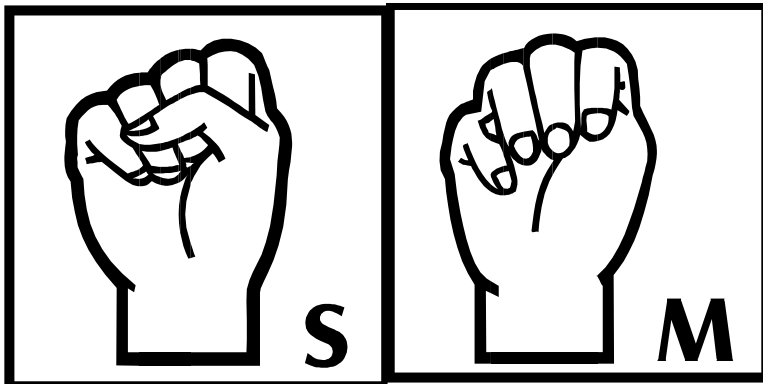
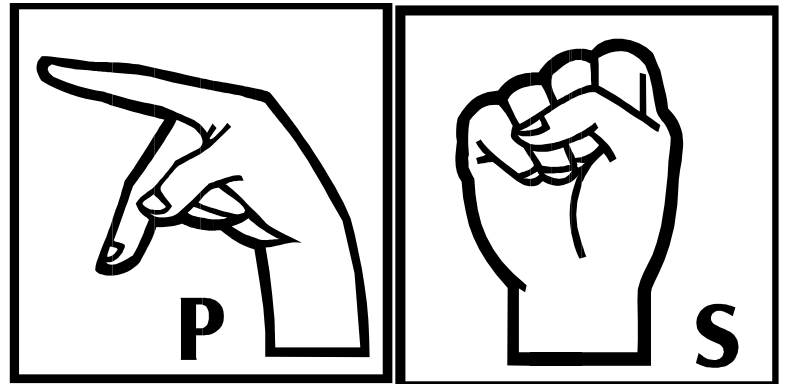
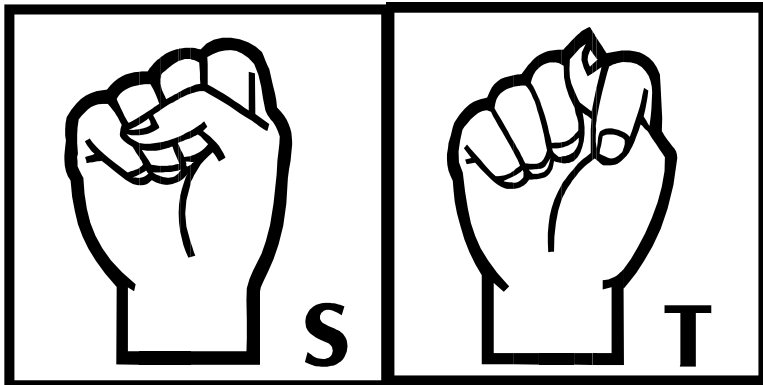
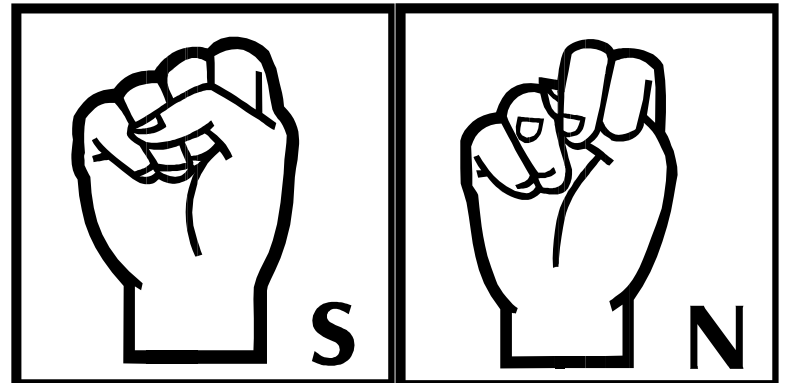
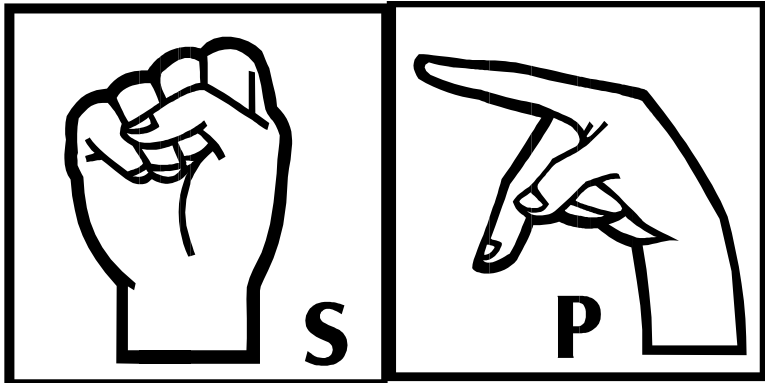
- * severe speech intelligibility/articulation disorder
- * receptive language stronger than expressive
 - * average cognitive potential

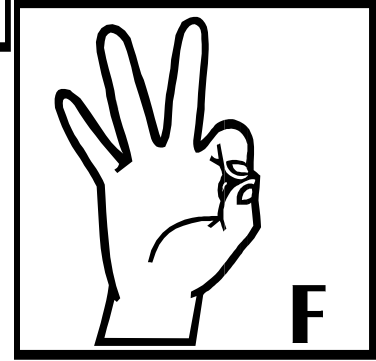
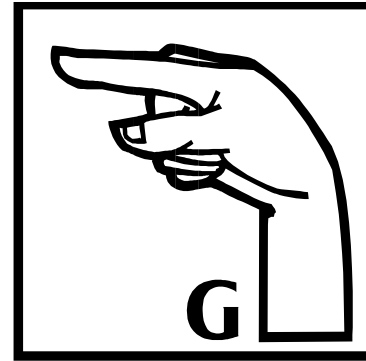
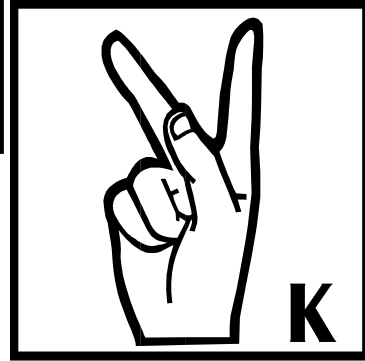
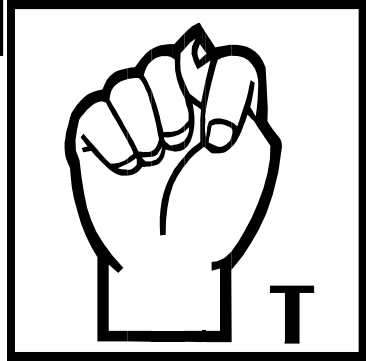
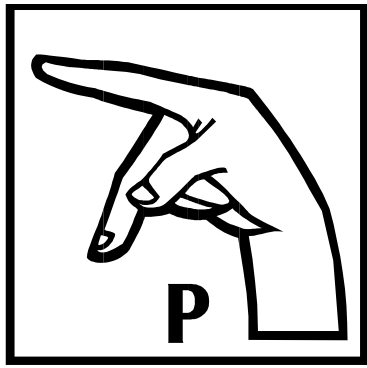
STEPS

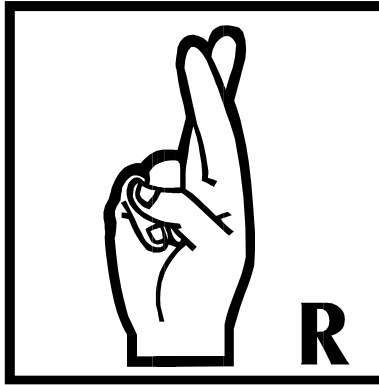
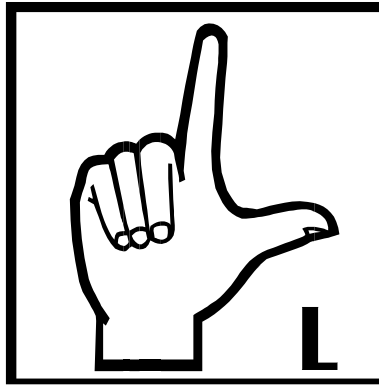
Team Teaching

- **K and 1st:** taught by general education teacher & dually certified SLP /special education teacher
+ additional pull-out speech therapy
- **2nd:** taught by general education teacher & special education teacher
+ push-in speech therapy 1x60 min daily
plus additional pull-out therapy

(maximum of 10-12 students who met the STEPS profile per class!!!)







Kindergarten Grade STEPS

Knowing the Code

bombard with
target sounds
& coordinating sign

1 week
per sound cycle
(5 target words)

individual or
small group
therapy sessions

Articulation
Oral-Motor Skills
Receptive Language
Expressive Language

target word cards
sent for home
practice

home-based
carry-over
is **essential!!!**

Therapy Sessions



1st Grade STEPS

Internalization Stage
apply the code

Apply
Sound Cycles
Cued Speech Signs

Learning Centers
Reinforce Target
story paired with
target sound cycle
& cooking project

Speech Therapy
Pull Out

2nd Grade STEPS

Generalize the Code

*Self-correction and self-awareness is key in their speaking, reading, and writing.

Classified students receive 60 minutes of push-in services from the SLP daily, in addition to their pull-out services.

Students are expected to be more independent with their skills.

Students are monitored as they begin to carry-over their skills into conversation and writing.

Transitioning from 2nd to 3rd

- By the end of 2nd grade the STEPS students should be ready to transition into a general education classroom for 3rd grade.
 - Their need for related speech services may still be required if remaining sound errors are present.

Residual Effects

- Reading Fluency
- Writing Organization
- Sequencing Sounds
in multi-syllabic words

