

*"Who are you  
going to call?"*

## Department of Early Childhood Staff Directory

Telephone: 262-8140

Fax: 262-8273

[www.rcsdk12.org/prek/](http://www.rcsdk12.org/prek/)

**Theresa Bianchi**

Word Processor  
262-8163  
[theresa.bianchi@rcsdk12.org](mailto:theresa.bianchi@rcsdk12.org)



**Patricia Dangler**

Assistant Director,  
Early Childhood Dept.  
328-3360  
[patricia.dangler@rcsdk12.org](mailto:patricia.dangler@rcsdk12.org)



**Sharon Hennekey**

Principal Budget Analyst  
262-8143  
[sharon.hennekey@rcsdk12.org](mailto:sharon.hennekey@rcsdk12.org)



**Jeanne Herrick**

Teacher, Technical Assistant  
262-8170  
[jeanne.herrick@rcsdk12.org](mailto:jeanne.herrick@rcsdk12.org)



**Sandy Hess**

Teacher, Technical Assistant  
262-8279  
[sandy.hess@rcsdk12.org](mailto:sandy.hess@rcsdk12.org)



**Robin Hooper, Ed.D.**

Executive Director,  
Early Childhood Dept.  
262-8248  
[robin.hooper@rcsdk12.org](mailto:robin.hooper@rcsdk12.org)



**Debbie Natale**

Early Childhood Dept. Secretary  
262-8640  
[debra.natale@rcsdk12.org](mailto:debra.natale@rcsdk12.org)



**Pattie Schueckler**

Teacher, Technical Assistant  
262-8774  
[patricia.schueckler@rcsdk12.org](mailto:patricia.schueckler@rcsdk12.org)



**Shannel Soanes**

Clerk II  
262-8457  
[shannel.soanes@rcsdk12.org](mailto:shannel.soanes@rcsdk12.org)



**Debra Smarsh**

Teacher, CPSE/SEIT  
[debra.smarsh@rcsdk12.org](mailto:debra.smarsh@rcsdk12.org)



**Pamela Soule**

Teacher, CPSE  
262-8148  
[pamela.soule@rcsdk12.org](mailto:pamela.soule@rcsdk12.org)



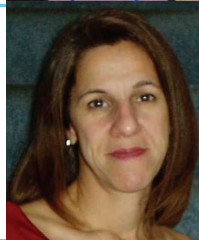
**Karen Spawton**

CPSE Chairperson  
262-8623  
[karen.spawton@rcsdk12.org](mailto:karen.spawton@rcsdk12.org)



**M'Lou Speranza**

Teacher, Music Building Blocks  
324-2730  
[m'lou.speranza@rcsdk12.org](mailto:m'lou.speranza@rcsdk12.org)



**Kelly Walsh**

Assistant Director,  
Preschool Special Education  
262-8195  
[kelly.walsh@rcsdk12.org](mailto:kelly.walsh@rcsdk12.org)

